

# Fairline 40



YEAR 1981 | £61500 | VAT PAID | LARGS OFFICE



# Summary

**Manufacturer:** Fairline 40

**Price:** £61500

**Location:** Largs

**Year:** 1981

**ID no.:** 7658

## DIMENSIONS

- **LOA:** 41' 4" (12.60m)
- **Beam:** 13' 1" (4.00m)
- **Draft:** 2' 11" (0.9m)
- **Keel:**

## ACCOMMODATION

- **Berths:** 4
- **Cabins:** 2
- **Heads:** 2
- **Showers:** 2

## PERFORMANCE

- **Top Speed:**
- **Cruising Speed:**

## TANKAGE

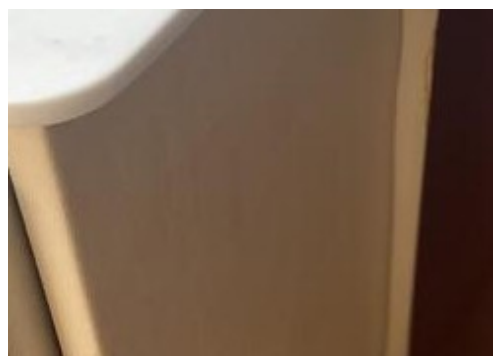
- **Fuel:** Diesel
- **Fuel Tank Size:** 1200 Litres
- **Water Tank Size:** 180 Litres

## MACHINERY

- **Engine Make:** Ford Mermaid
- **Horsepower:** 210
- **Drive Type:** Shaft drive

## OTHERS

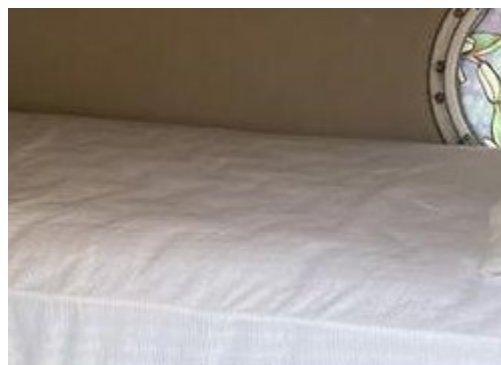
- **Aircon:**
- **Heating:** 1



# Fairline 40

## Broker Remarks

The Fairline 40 has excellent sea keeping abilities and is a very comfortable, spacious cruiser. This flybridge boat has a forward double berth cabin, twin berth side cabin and a crew cabin / storage accessed from the cockpit. Saloon has been updated with new carpets and settee. This Fairline 40 is powered by twin Ford Mermaid 210hp diesel engines, cruising at 9 knots with maximum speed of approximately 17 knots. Engines serviced 2022, new plotter and VHF radio fitted, Vetus bow thruster fitted that improves the manoeuvrability in the marina.



# Accommodation

## Accommodation

Forward cabin with island double berth and en-suite shower room. Opening portlights, hatch, hanging locker, storage and under berth storage. Access panel to chain locker. Door leading through to passage with day heads to starboard. Cabin to port with crossover single berths, opening portlights, hanging locker and storage.

Galley to starboard, steps up to saloon with helm to port. Double helm seat, opening saloon windows to port and starboard. Saloon with L shaped settee and adjustable dining table to port. Settee can be used as a single berth, separate new inflatable double bed. Storage units to starboard. Curtains and carpets throughout. Sliding doors to cockpit. Crew cabin accessed from the cockpit with single or double berth with storage and window to cockpit

## Galley

Microwave

Four ring gas hob, new

Large fridge

Twin stainless steel sinks

Storage

Hot and cold water system

Opening portlights

## Heads compartments fitted with

Electric flush toilet (day heads only)

Sink

Shower

Hot and cold water system

Storage

Opening portlight

Corian tops 2019/20

# Mechanical and Rigging

## Engine and machinery

Twin Ford Mermaid 210hp diesel engines

PRM gearboxes

Engines serviced 2022

New turbo fitted to port engine

New lift pump fitted to starboard engine

New fuel pipes

5 kva generator

Vetus bow thruster installed 2022

Calorifier 2020

Cabin heating 8kw 2018

Battery charger











**Instruments****Inside helm**

Engine instruments  
Chart plotter, new  
DSC VHF radio, new  
Bow thruster controls  
Compass  
Saloon TV with Amazon Firestick

**Flybridge helm**

Engine instruments  
Engine controls  
Compass

**Cockpit**

Aft bench seat with cushions  
Under the aft bench seat there is a large cabin that can be used as a single or double berth with storage  
Gas locker  
Lazarette  
Ladder to flybridge  
Sliding door to saloon  
Cockpit canvas covers 2018  
Transom door  
Access to side decks

**Deck gear**

Stainless steel pulpit and side rails  
Electric anchor windlass 2019  
Anchor with chain  
Single bow roller  
Windscreen wipers  
Aft platform  
Swim ladder  
Dinghy davits  
Various warps and fenders

**Flybridge**

Aft bench seat  
Triple helm seats  
Stainless steel rails  
Engine controls

**Safety equipment**

Fuel cut off valves outside engine room  
Engine compartment automatic fire extinguishers  
Manual and electric bilge pump

**Further information**

Outboard and dinghy on board are not included in the sale

**Comment**

Hull was antifouled 2022  
Interior has been updated with new carpet, new settee, new gas hob, two new single mattresses, new soft furnishings, new headlining at helm position.

**Euroyachts Disclaimer**

The Company offers the details of this vessel in good faith but cannot guarantee or warrant the accuracy of this information nor warrant the condition of the vessel. A buyer should instruct his agents, or his surveyors, to investigate such details as the buyer desires validated. This vessel is offered subject to prior sale, price change, or withdrawal without notice.



# Contact

## LARGS OFFICE

**Address:**

The Boat Showroom, Largs Yacht Haven, Irvine Road, Largs, KA30 8EZ

**Telephone:** +44(0)1475 687204

**Email:** [info@euroyachts.com](mailto:info@euroyachts.com)

Disclaimer : The company offers the details of this vessel for sale but cannot guarantee or warrant the accuracy of the information contained in the specification or warrant the condition of the vessel or equipment. A buyer should instruct his agents, or surveyors, to investigate such details as the buyer desires validated. This vessel is offered for sale subject to no prior sale, price change, or withdrawal without notice.

