

Sealine International S25



Year: 2004
Location: Chatham Marina, Kent
LOA: 25' 0" (7.62m)
LWL:
Ballast:
Designer:
Beam: 8' 0" (2.44m)
Draft: 3' 6" (1.07m)

Heads:

Cabin:

Remarks:

2005

2005 specification. has a GRP hull, deck & cabin. 150hp prop sterndrive, bow thruster, low engine. Windlass, Ideal for river or coastal cruising.

**Another boat sold by
Network Yacht Brokers**

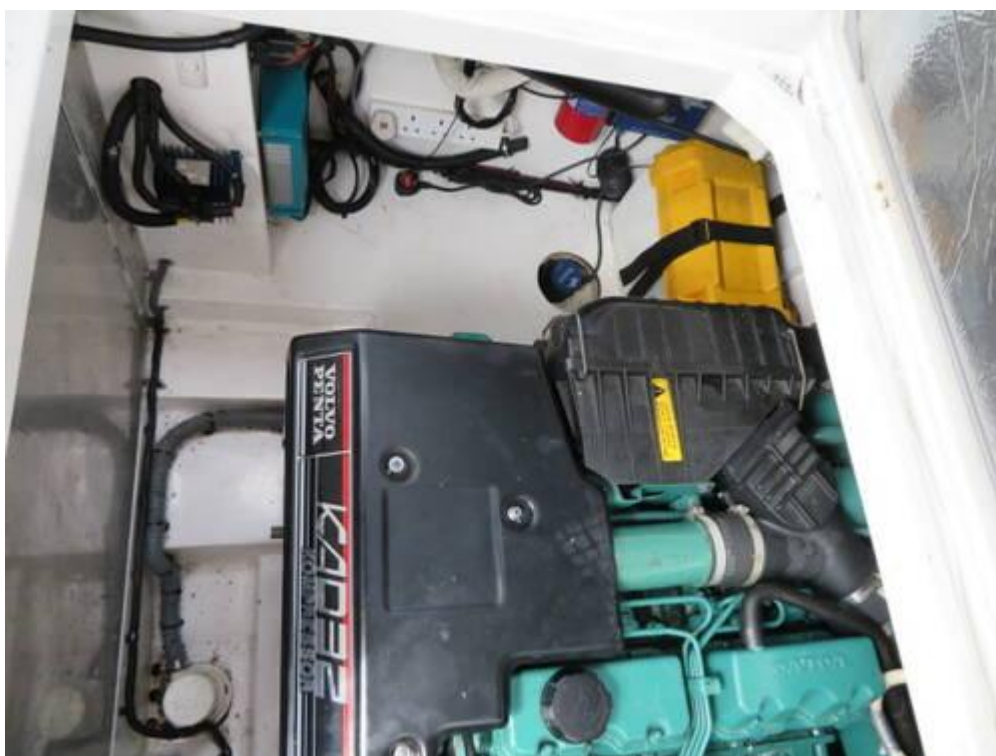
38950

Tax Paid

kyb Kent T: +44 (0)1634 571605

orkyachtbrokers.com | over 700 boats listed

REF: 38591



Mechanical and Rigging

Mechanical Systems:

Single Volvo KAD32DP turbo charged diesel engine with concentric fixed Duo Prop sterndrive, bow thruster & trim tabs. Aluminium Fuel tank holding 227L giving this boat an approximate cruising speed of 25 knots and a max of 30 knots. Engine last serviced September 2020 at 505 hours. Engine hours as at 31st August 2023 515.

Electrical Systems:

There are 3 x 12v batteries 1 x Domestic, 1 x Engine starter (New 2022) ,1 x Bow thruster

All batteries are charged from engine alternator via a battery management system. The boat has a 240V shore power ring main with immersion heater and battery charger .

Inventory

Deck Equipment:

- Anchor
- Chain/Warp (20m)
- Electric Windlass
- Cockpit Canopy
- Bathing Platform
- Boarding Ladder
- 7 x Fenders
- 4 x Mooring Warps

Navigational Equipment:

- Compass
- Depth
- Speed/Log
- VHF Radio
- Chart Plotter
- Deck Level Lights
- Mast head Lights

Safety Equipment:

- 3 x Fire Extinguishers
- 1 x Manual Bilge Pump
- 1 x Electric Bilge Pump

Hull:

Planning hull with hydraulic steering

History & Construction:

This Sealine S25 was built in October 2004 and commissioned in 2005. It has a white GRP

hull and superstructure. It has been owned by the current owner since 2019 and has just been ashore to be antifouled, anodes and bellows changed . The engine was last service in September 2020 but has not left the marine since being serviced. The owner is selling as he wants to take up sailing.

Accommodation

The Sealine S25 offers 4 berths in one cabin. The cabin access is through a tinted sliding door down 3 steps; to the port side a galley fitted with a Plastimo two burner gas hob and grill, stainless steel sink and drainer along with a hot/cold tap. Eye level storage shelves, and a large locker and drawer make up the space for storage beneath.

Opposite the galley, is access to the midships cabin which offers a double berth beneath the cockpit floor. This berth has sitting headroom and an emergency escape window into the cockpit. Beneath the bed lie the water tanks, access to the water pumps and the shower sump.

Starboard side a midships is the heads compartment with a manual sea toilet, wash basin and shower supplied with hot/cold water and 72 litre holding tank. The forward area in the saloon comfortably seats 5 people in a U-shape, around a table. The table can be dropped down and an infill cushion fitted to provide a double berth.

Beneath the seating is a storage area. The area is complemented by a wide mirror on the forward bulkhead and a compact hanging locker. The Webasto cabin heating system gives the interior a cosy feel .

Remarks :

2005 model Sealine S25 for sale in Kent

This Sealine S25 built in 2004 to 2005 specification. has a GRP hull, deck & superstructure, single Volvo KAD32P inboard Diesel engine with a duo prop sterndrive, bow thruster, low engine hours approx.515 as at August 2023, trim tabs, electric anchor windlass, Ideal for river or coastal cruising.

Contact: Network Yacht Brokers Kent Chatham Maritime Marina Leviathan Way, Chatham,
Kent ME4 4LP

Tel: +44 (0)1634 571605

Email: info@nybkent.com