

Custom Built Canyon 92



YEAR 2024 | \$648,000 | VAT PAID | MALLORCA OFFICE



Summary

Manufacturer: Custom Built

Price: \$648,000

Location: Mallorca

Year: 2024

ID no.: 82F9818718

DIMENSIONS

- **LOA:** 89' 0" (0.00m)
- **Beam:** 18' 0" (0.00m)
- **Draft:** 6.23' 0" (0m)
- **Keel:**

ACCOMMODATION

- **Berths:** 0
- **Cabins:** 5
- **Heads:** 5
- **Showers:** 0

PERFORMANCE

- **Top Speed:** 10 kn
- **Cruising Speed:** 10 kn

TANKAGE

- **Fuel:** 0
- **Fuel Tank Size:** 0
- **Water Tank Size:** 4000 Litres

MACHINERY

- **Engine Make:**
- **Horsepower:**
- **Drive Type:** Sterndrive

OTHERS

- **Aircon:**
- **Heating:**



Custom Built Canyon 92

Broker Remarks

Brokers comments:

Stepping aboard this 2005 Canyon motor yacht that has undergone a comprehensive refit in 2024 is akin to discovering a hidden gem, polished to a brilliant shine. This particular vessel, while retaining the robust build quality and classic lines, now offers an experience that feels remarkably contemporary, blurring the lines between a pre-owned yacht and a brand-new custom build.

Interior Transformation:

Where the refit truly shines is within the interior spaces. Gone are any signs of dated decor; instead, a sophisticated and cohesive design theme prevails. The 2024 refit involved a complete overhaul of soft furnishings, including carpets, curtains, and upholstery, replaced with luxurious materials in a contemporary palette.



Comfort & Liveability:

The 2005 Canyon 92, even before its refit, was known for its spaciousness. The 2024 refurbishment amplifies this, creating an even more inviting and functional living environment. Cabins feel more open and airy, with improved lighting and storage. Common areas, such as the salon and dining spaces, are transformed into elegant and comfortable zones for relaxation and entertaining. The attention to detail in the refit ensures that every corner of the yacht is optimized for comfort and luxury.

Value Proposition:

A 2005 Canyon 92 motor yacht with a 2024 refit presents a compelling value proposition. You get the proven seaworthiness and robust construction of a classic yacht, combined with the aesthetics, technology, and comfort of a much newer vessel at a fraction of the cost of a comparable new build. This makes it an attractive option for discerning buyers who appreciate timeless design but demand modern amenities.

2024 Rebuild Included

- Total Saloon Rebuild: Sofas, Marble-Topped Cabinets with Hand Etched
- Facings and with Additional Storage, Twin Powered Hi-Lo Massive Oak
- Tables, Overhead And Table Lighting
- Total SunDeck Rebuild: U-Shaped Seating, Triple Hi-Lo Massive Iroko
- Tables, Marble-Topped Buffet Counter
- Total Rebuild of All Guest Cabins
- New Galley Cabinets
- New Mighty Mariner Controls with Electro-Mechanical Actuators, Kobelt
- New Propeller Shafts, SS
- New Propellers, Teignbridge
- New Dripless Shaft Seals, Lasdrop Elite Seal
- New Corrosion-Free SeaWater Pumps, DAB
- New Corrosion-Free FreshWater Pumps, DAB

- New RO Membranes
 - New SeaWater Pre-Filters
 - New A/C Units in Saloon, 1 x 3HP & 1 x 2HP
 - New Marine Toilets with Silent Macerator Evacuation Pumps, Jabsco
 - New Guest Tender, seating 5, with 40HP Yamaha 4-Stroke Outboard Engine
 - New Anchor Winch with Capstan, Maxwell 2500
 - New SearchLight, ACR RCL-95 LED with Remote Control, 460,000 Candela
 - New FloodLights, Sides, 2 x Auzkin; Rear, 2 x Exzeit
 - New LG Washer-dryer, 9 kg, in main cabin
 - New CCTV System
 - Rewiring Engine Room Cables
-
- Revamped Engine Room Layout
 - Revamped Awnings

2021 Engine Rebuild

- New Pistons and Liners
- New Fuel Injectors
- New Valves
- New Gaskets and Seals
- New Aftercooler
- New Engine Room and Lazarette Sound and Fire Insulation

Accommodation

- Four double Guest cabins, of which two with additional bench bed each,
- all with en-suite heads
- Air conditioning, marine split units in all indoor areas
- Saloon with electric Hi-Lo tables, counters and storage
- Cockpit: two levels, upper with seating and tables, lower with fighting chair
- Sun Deck with Hi-Lo tables
- Sun pads: two, one forward facing and one rear facing
- Pilothouse
- Storage in Saloon and Sun Deck

Technical

- Main Engines: Twin Cummins N14-M
- Rated Power: 480 HP @ 1800 RPM Each
- Rating: Continuous Heavy Duty
- Exhaust: Wet
- Mufflers: Centek ComboSep
- Transmission: Twin Disc MG-5114A
- Ratio: 1.92:1, High Torque
- Fuel: Diesel
- Remote control: Kobelt MightyMariner
- Control Actuators: Kobelt Electro-Mechanical
- Steering: Kobelt Hydraulic Pump and Piston
- Propellers: Teignbridge
- Shafts: Stainless Steel
- Dripless Shaft Seals: Lasdrop Elite Seal
- RO Desalinator: Custom, 750 Litres/Hour
- Winch with Capstan: Maxwell
- Chain/Rope Rode with High-Holding Power anchor

Electrical

- Generators with sound shields: Two, Onan
- Rated Power: 75 kVA Each
- Mufflers: Centek ComboSep
- Vessel's voltage: VAC 380, 220 and 110; VDC 12 and 24
- Battery Banks: 12 and 24 VDC
- 12 and 24 VDC high capacity battery chargers in Engine Room and
- Pilothouse
- Main electrical switch board
- Secondary panels: 220VAC, 12 and 24 VDC

Pilothouse and Electronics

- Controls: Kobelt MightyMariner
- Vetus heavy duty, oversized, hydraulic steering pump
- Raymarine E120 Combo: chartplotter, radar, fish finder
- Raymarine back-up chartplotter

- Simrad RS35 VHF/AIS marine radio
- Garmin Striker 7sv, back-up depth sounder

Galleys

- Main Galley, with full set of appliances and dedicated additional RO water
- filtration system
- Additional freezers in the Lazarette
- Separate Crew Galley

Entertainment and Other

- Buffet counter on Sun Deck with under-counter refrigerator and storage
- Kenwood Bluetooth sound systems with Bose speakers in the Saloon, and
- with Tannoy outdoor speakers in the Cockpit
- Kenwood Bluetooth sound systems in the Sun Deck with Bose
- Environmental speakers
- Samsung 58" TV in Saloon
- WiFi with amplifiers covering the whole boat
- Iroko decking and cap rail on Main Deck
- Synthetic Teak-like foam decking on Sun Deck

Safety and Security

- Life raft, 15 Persons with hydrostatic release
- Life jackets in all cabins, additional jackets on the Main Deck and Sun
- Deck
- Life buoys with lights, one on each side of the Main Deck
- Smoke detectors/alarms in all cabins and saloon
- Heat detector in engine room
- Fire extinguishers:
 - Automatic canisters over the engines, the generators, the battery bank
 - and the main electrical panel, six total;
 - CO2 hand-held units in the Engine Room, Lazarette and SunDeck/
- Pilothouse;
- Powder hand-held units in all Cabins, Saloon and Galleys
- Fire pump with hoses in companionway and Lazarette
- Groco electric clutch pumps on each main engine as back-up for fire pump

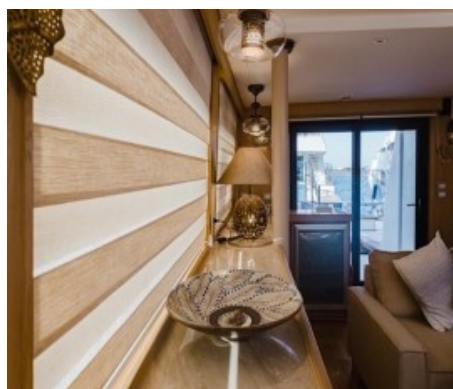
- High capacity automatic bilge pumps in all bilge spaces, seven units
- High capacity manual bilge pump
- High water alarms
- CCTV cameras
- Radar reflector
- 5-Seat Guest Tender with Yamaha 40 HP four-stroke outboard Engine
- Additional work tender with Yamaha 15 HP outboard engine

Tankage

- Diesel fuel: 7000 litres in two tanks
- Fresh water: 2000 litres in two tanks
- Grey-water holding tank, macerating discharge pump: 600 litres
- Black-water holding tank, macerating discharge pump: 500 litres

Mechanical and Rigging

{MECH_FIRST}



Contact

MALLORCA OFFICE

Address:

Carrer de Monsenyor Palmer, 1 07014 Palma de Mallorca Balears Espana

Telephone: +34 658 399 044

Email: info@nybmallorca.com

Disclaimer : The company offers the details of this vessel for sale but cannot guarantee or warrant the accuracy of the information contained in the specification or warrant the condition of the vessel or equipment. A buyer should instruct his agents, or surveyors, to investigate such details as the buyer desires validated. This vessel is offered for sale subject to no prior sale, price change, or withdrawal without notice.

