

Bavaria Vision

YEAR 2013 | €220000 | MUGLA OFFICE



Summary

Manufacturer: Bavaria Vision

Price: €220000

Location: Mugla OFFICE

Year: 2013

ID no.: 8014

DIMENSIONS

- **LOA:** 46' 0" (14.02m)
- **Beam:** 12' 0" (3.66m)
- **Draft:** 6' 11" (2.1m)
- **Keel:** Fin keel

ACCOMMODATION

- **Berths:** 6
- **Cabins:** 3
- **Heads:** 1
- **Showers:** 1

PERFORMANCE

- **Top Speed:** 8
- **Cruising Speed:** 6

TANKAGE

- **Fuel:** Diesel
- **Fuel Tank Size:** 210 Litres
- **Water Tank Size:** 360 Litres

MACHINERY

- **Engine Make:** Volvo Penta
- **Horsepower:** 75
- **Drive Type:** Saildrive



Bavaria Vision

Broker Remarks

-Boat Bavaria Vision 46 is available for sale. -SAILS: 2023. - Battery storage system: NEW 2024: BOS LE300 Lithium / additional battery rating 150 Ah-If you would like more information for this boat, please contact us by email, Whatsapp message or a call. The price shown is with our commission included. -3 cabin sailing yacht Bavaria Vision 46 was built in 2013. and it is docked in Türkiye. -Boat can accommodate up to 7 people in 3 double cabins and a saloon with 1 extra bed. -Sailing yacht offers 1 toilets with a shower. - Boat equipment features rolling mainsail, bimini and bow thruster. It also boasts heating, audio system and outside speakers. The fully-equipped galley includes an oven, cooker, sink and kitchen utensils.



Mechanical and Rigging

Mechanical and Rigging

CONSTRUCTION

- Construction Materials: GRP
- Builder/Designer: Bavaria
- Keel/Hull Form: Fin
- Make/Model: 46 Cruiser
- Steering Type: Twin Wheel
- Year Built: 2013
- Rudder Type: Spade
- Deck Materials: GRP & Teak
- Superstructure Materials: GRP
- Hull Colour: White

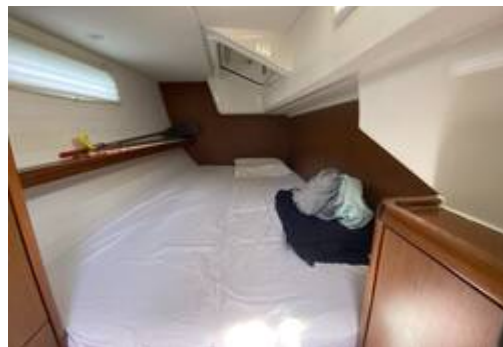
DIMENSIONS

- LOA: 14.24m
- LWL: 12.2 m
- Beam: 4.35 m
- Draft: 2.05 m
- Ballast: 3300 kg

MECHANICAL

- Manufacturer/Model: Volvo D2-75 (serviced 2023)
- Year of Manufacture: 2013
- Cruising Speed: 6 knots
- HP :75 hp
- Engine Hours: 1,360
- Maximum Speed: 8 knots
- Bow Thruster: Side power Sleipner SE100/185T
- Drive Type: Saildrive (seal replaced 2022)
- Fuel Type: Diesel

TANKAGE



Inventory

DECK

- Decking Type: GRP & Teak Cockpit and stern
- Anchor Locker
- Cockpit/Deck Shower
- Anchors: CQR
- Cockpit Table
- Anchor Chain/Warp: 65m
- Cockpit Lockers
- Anchor Windlass: Lewmar
- Winches: 4 Lewmar (3 electrical 1 manuel winches)
- Pushpit/Pulpit
- Boarding Ladder

CANVAS

- Spray Hood
- Cockpit Cushions
- Bimini
- Winter Covers for Wheels, Bimini & Spray Hood
(Sprayhood and Bimini materials are due for replacement)

SAFETY

- Liferaft for 6 persons (2019)
- Lif jackets for 6 persons (with lifelines)
- Jackstays
- Floating lights x 2

TENDER

- Dinghy Freesun
- Outboard engine - Tohatsu 3,5 HP
- Customs storage place for outboard engine in cockpit locker

ELECTRICAL EQUIPMENTS

- Battery charger- Cristec Ypower 12V/40A
- Inverter- Victron Phoenix 12/800

Complete kitchen equipment



Contact

MUGLA OFFICE

Address:

A Marin Yacht Ltd STI Icmeler Mevkii No:40 Kapi No:A Bodrum, Mugla

Telephone: +90 533 492 8452

Email: info@nybmugla.com

