

Centurion FE 23



YEAR 2025 | £181,500 | VAT NOT PAID | POOLE OFFICE



Summary

Manufacturer: Centurion

Price: £181,500

Location: Poole

Year: 2025

ID no.: 29147

DIMENSIONS

- **LOA:** 23' 0" (7.01m)
- **Beam:** 8' 6" (2.59m)
- **Draft:** 3' 0" (0.91m)
- **Keel:** Deep V Planing

ACCOMMODATION

- **Berths:** 0
- **Cabins:** 0
- **Heads:** 0
- **Showers:** 0

PERFORMANCE

- **Top Speed:**
- **Cruising Speed:**

TANKAGE

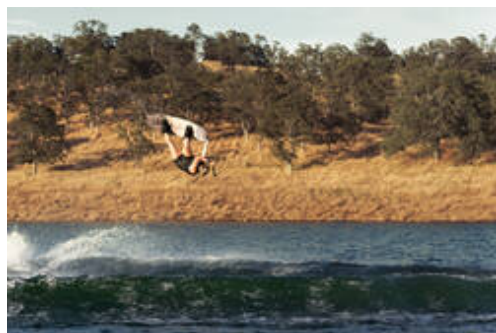
- **Fuel:** Petrol
- **Fuel Tank Size:** 89 Gallons
- **Water Tank Size:** 0

MACHINERY

- **Engine Make:** PCM L96 V8 6ltr
- **Horsepower:** 360
- **Drive Type:** Shaft drive

OTHERS

- **Aircon:**
- **Heating:**



Centurion FE 23

Broker Remarks

The Fe23 is the boat everyone will enjoy. It is the perfect combination of size and performance for professional level experiences and weekend dreamers. Do you aspire to compete? The Fe23 will give you the tools to be on par with your most admired professional. Only competing with yourself? The Fe23 is still the boat to give you the best ride to perfect your performance and style. The 23-foot length hits that sweet spot for a wake surf boat, enabling you to fill the space with up to 14 people. While it comes with a hefty 3150 standard pounds of sub-floor ballast, you can add an optional 2100 pounds to create a total of 5250 pounds to push the waves you want for top-tier execution. Add an optional "Silent Stinger" wake plate and keep the conversation going. The optional RAMFILL2 "The Baller" enables you to fill and empty the ballast quickly while underway. Design the boat you want to get the best out of your performance.



Accommodation

Seating for up tp 14 persons

Mechanical and Hull

HULL DESIGN:

With its 20 degrees of deadrise at the transom, the Opti-V hull displaces more water, before any extra weight is added, while preserving a great rough water ride. At each corner of the transom a flat triangle extends towards bow creating lift along the rear half of the boat for a level running attitude, front to back as well as side to side. Due to this balanced design, the Opti-V Hull enhances fuel economy and provides a much quieter ride than most boats delivering this type of power. With hook built into the rear edge of delta pad, the seated driver can see over the bow while pulling a rider without compromising the waves or wakes thanks to a level running attitude. The hull also deflects rollers, at the bow and transom, so big water can't spoil your fun. It's clear the Opti-V Hull delivers the best waves, wakes and ride - in all conditions.

BALLAST:



The Fe23 comes with as many as seven precisely placed ballast locations that, when you combine them all, equals 5,250lbs of ballast. But large ballast capacity isn't the complete story. We do ballast a little differently by distributing it evenly throughout the boat. This even distribution displaces weight the entire running surface of this 23-foot performance machine, resulting in a longer wave and a balanced running attitude, front to back, with virtually no bow rise to distract the driver. This is the kind of thing we believe makes a huge difference in your experience.

We have a nickname for the available RAMFILL² ballast system. We call it the "Baller." It's a nearly maintenance free system that offers 2,700lbs – plus of ballast capacity that fills in 90 seconds. With its four stainless steel two-inch valves (two in two out), anything plastic is eliminated. The large sub-floor tanks extend from the helm to the transom on each side of the lounge. This just adds to the well-distributed ballast placement and helps create longer waves with consistent push from the face to the curl crash. Baller, indeed.

BALLAST STATISTICS:

Max ballast available 5,250 LBS

Bow ballast tank 450lbs

Optional additional bow ballast 350lbs

Optional rear ballast 1,300lbs

Optional transom ballast 450lbs

Sub floor ballast 2,700lbs

ENGINE:

PCM L96 V8 6ltr petrol

5 years or 600 hour warranty

With upgraded engine PCM ZZ6 comes with 1,000 hour and 5 year warranty

STANDARD EQUIPMENT:

Core Gelcoat Scheme
Battery Management System w/ PDM Reset Panel
Battle Advance Tower
R 6" black speakers and Amp
Depth Finder
Bow Ballast Hard Tank
Wet Sounds Stereo Face Mounted Driver's Side w/ Volume Knob
Rear View Mirror
Pumped Sub-Floor Ballast
Centurion Split HD Touch Vision Dash System
4 Stainless Pull-up Cleats
Stinger Wake Plate
ZeroOff Pro GPS Cruise Control
Walkthrough Trash Shoot w/Receptacle
Ski Pylon
Cobra Racing Driver's Seat w/Swivel & Flip Up
Rhino-Lined Storage Areas
Engine Intake Water Strainer
Wet Sounds Back Bone Eco System, WS-BB-10 Black Box
1 USB/ 12-Volt Combo Power Outlets
Engine Flush Kit
Stereo Face and In-Screen controls
4 USB/ USB C Combo Power Outlets
AM/FM USB Stereo
Boatmate Tandem Trailer

Wet Sounds Back Bone Eco System, WS-BB-10 Black Box, AM/FM, Bluetooth and USB Input, In-Glove Box Face, Driver's Remote w/ Knob, Recon 6.5" black speakers and 4-channel OEM Amplifier
Plug-N-Play Bow Ballast Bag
Plug-N-Play Rear Ballast Bag
Plug-N-Play Rear TRANSOM Ballast Bag
RAMFILL 2 "The Baller" (replaces pumped sub-floor ballast)
Quick Surf System
Centurion "Silent Stinger" Wake Plate w/ Forced Water Induction to Disperse Exhaust and Reduce Noise
Slide Seat Component: 1st Lean-back (must be ordered with slide seat w/ receptacles)
Slide Seat Component: 1st Lean-back (must be ordered with slide seat w/ receptacles)
Slide Seat Component: 2nd Lean-back (must be ordered with slide seat w/ receptacles)
Slide Seat w/ Component Receptacles, Slide Track and Limo Lighting
Gator Step 2-Color Fearless Innovation Cut

DEALER COMMENT:**BOAT AS LISTED INCLUDES THE FOLLOWING EXTRAS:**

Battle Advanced Tower by Roswell
Battle Advance Tower Bimini by Roswell
Swivel Board Racks by Roswell, MAG

We are proud to represent the Centurion factory, offering a range of exceptional boats that can be fully customised to suit your preferences. Using our **Build a Boat** feature, available at <https://centurionboats.com/models/fe-series/fe23/colorize/> you can explore the full range of options and create your perfect design. We would be delighted to personally assist you and provide a bespoke quote tailored to your specific requirements. Please feel free to get in touch with us to start designing your dream boat today.



Contact

YACHTS.CO POOLE INTERNATIONAL POOLE OFFICE

Address:

YACHTS.CO Poole International Cobbs Quay Marina Woodlands Avenue Poole BH15 4EL

Telephone: 01202 669554

Email: poole@yachts.co

Disclaimer : YACHTS.CO Poole International offers the details of this vessel for sale but cannot guarantee or warrant the accuracy of the information contained in the specification or warrant the condition of the vessel or equipment. A buyer should instruct his agents, or surveyors, to investigate such details as the buyer desires validated. This vessel is offered for sale subject to no prior sale, price change, or withdrawal without notice.

