

Nordkapp 905



YEAR 2023 | €125,000 | VAT NOT PAID | NYB LEFKAS OFFICE



Summary

Manufacturer: Nordkapp

Price: €125,000

Location: Nyblefkas

Year: 2023

ID no.: 22F9452729

DIMENSIONS

- **LOA:** 30' 0" (9.14m)
- **Beam:** 10' 0" (3.05m)
- **Draft:** 2.9' 0" (0.88m)
- **Keel:** Deep V Planing

ACCOMMODATION

- **Berths:** 2
- **Cabins:** 1
- **Heads:** 1
- **Showers:** 1

PERFORMANCE

- **Top Speed:**
- **Cruising Speed:**

TANKAGE

- **Fuel:** Petrol
- **Fuel Tank Size:** 0 Litres
- **Water Tank Size:** 0 Litres

MACHINERY

- **Engine Make:** Mercury Verado
- **Horsepower:** 450
- **Drive Type:** Outboard

OTHERS

- **Aircon:**
- **Heating:**



Nordkapp 905

Broker Remarks

Discover the 2023 Nordkapp Gran Coupe 905, a premier Norwegian vessel crafted for year-round enjoyment. This yacht boasts a spacious and intelligently designed interior, including a roomy forward cabin with its own enclosed toilet. Outside, the bow and stern sun lounge areas invite relaxation, while removable cockpit seats provide versatile space for various activities. Wide passageways with sturdy handles ensure safe navigation throughout the vessel.



Highlights:

- **Engine:** Less than 50 hours of use, meticulously maintained
- **Location:** Docked out of the water in Preveza, Greece, ready for inspection
- **Protection:** Professionally installed full cover
- British Part One Registration
- Under water lights

Accommodation

The Company offers the details of this vessel in good faith but cannot guarantee or warrant the accuracy of this information nor warrant the condition of the vessel. A buyer should instruct his agents, or his surveyors, to investigate such details as the buyer desires validated. This vessel is offered subject to prior sale, price change, or withdrawal without notice.

Dimensions

- Length Overall: 9.05m
- Max Draft: 0.9m
- Beam: 2.92m

Weight

- Dry Weight: 2,550kg

Miscellaneous

- Seating Capacity: 9
- Windlass: Electric Windlass
- Electrical Circuit: 12V

Tanks

- Fresh Water Tank: 1 x 48L
- Fuel Tank: 1 x 309L
- Holding Tank: 1 x 48L

Accommodations

- Cabins: 1
- Heads: 1

Disclaimer

Mechanical

Dimensions

- Length Overall: 9.05m
- Max Draft: 0.9m
- Beam: 2.92m

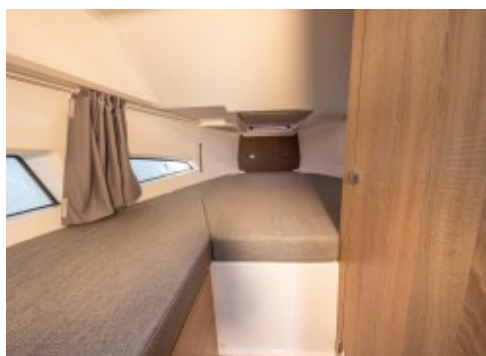
Weight

- Dry Weight: 2,550kg

Engine

- Make: MERCURY
- Model: VERADO
- Year: 2023
- Total Power: 450hp
- Engine Hours: 50
- Type: Outboard-4S
- Fuel Type: Petrol
- Propeller Type: 4 Blade
- Propeller Material: Stainless Steel

Electronics



- Depthsounder: GARMIN GTM 15
- Plotter: GARMIN 12"
- Radio: ?
- Compass: ?
- CD Player: SOUND SYSTEM FUSION RA 210 WITHOUT DAB
- LOUDSPEAKER 6.5" 200W x 4
- GPS: ?
- Cockpit Speakers: ?
- VHF: ?
- Inside Equipment
- Bow Thruster: ?
- Electric Bilge Pump: ?
- Chemical Head: ?
- Refrigerator: ?
- Battery Charger: ?
- Outside Equipment
- Cockpit Table: ?
- Swimming Ladder: ?

Additional equipment

- Deep vee hull with self-draining and outflows mechanism
- Reinforced protective windshield with aluminum frame
- Inox railings, handles, cleats, glassholders
- Reinforced transom
- Swim platforms with ladder aft
- Fuel installation with ventilated tanks and electronic level monitoring
- Complete safety electrical installation on build twin battery with smart electronic regulator 12V and USB charging ports
- 360 protective bumper strip
- Adjustable armchairs with side support and light shock absorption
- Leather/aluminum steering wheel
- Integrated high accuracy compass
- Windshield wiper light and washer cockpit switch
- Silvertex carbon upholstery with orange details

- Sleep cabin with softex mattress and ventilation grills
 - Sleep cabin marine grade windows with curtains
 - Pilothouse and cabin soundproofing/cabin door with shock absorber
-
- Cabin and pilothouse courtesy light package
 - Pilothouse table
 - Toilet cabin ventilated with toilet with electric flushing system and sewage outlet connection
 - Cockpit table in grey color
 - Table on left console
 - Fresh water system with tank/sink and shower with outflow
 - Foam teak floor on the deck
 - Carpet flooring in the cabin
 - Flag pole, navigation light pole, and front lights
 - Mooring and safety equipment
 - Roof rails
 - Trim tabs Lectrotab with automatic leveling control system
 - Anchor windlass
 - Remote control for windlass and bow thruster
 - Chart plotter
 - Depth sounder
 - Sound system Fusion
 - Additional battery
 - Light package outside
 - Additional cushion
 - Bench small and large aft deck
 - Cooling drawer
 - Sunbed deck bow
 - Underwater lights

Contact

**GREEK YACHT SALES LTD. T/A NETWORK YACHT
BROKERS LEFKAS**

NYB LEFKAS OFFICE

Address:

Network Yacht Brokers Lefkas Cleopatra Marina Preveza 48100 Ionian Islands Greece

Telephone: UK+ 44 203 051 0525 / Mob.+306945347870

Email: info@nyblefkas.com

Disclaimer : Greek Yacht Sales Ltd. t/a Network Yacht Brokers Lefkas offers the details of this vessel for sale but cannot guarantee or warrant the accuracy of the information contained in the specification or warrant the condition of the vessel or equipment. A buyer should instruct his agents, or surveyors, to investigate such details as the buyer desires validated. This vessel is offered for sale subject to no prior sale, price change, or withdrawal without notice.

