

Azimut 86S



YEAR 2006 | €1,100,000 | VAT NOT PAID | CORFU OFFICE



Summary

Manufacturer: Azimut

Price: €1,100,000

Location: Corfu

Year: 2006

ID no.: 21F8438440

DIMENSIONS

- **LOA:** 86' 11" (26.50m)
- **Beam:** 19' 0" (5.80m)
- **Draft:** 5' 3" (1.6m)
- **Keel:** Deep V Planing

ACCOMMODATION

- **Berths:** 8
- **Cabins:** 4
- **Heads:** 4
- **Showers:** 5

PERFORMANCE

- **Top Speed:** 40 kn
- **Cruising Speed:** 29 kn

TANKAGE

- **Fuel:** Diesel
- **Fuel Tank Size:** 7200 Litres
- **Water Tank Size:** 1100 Litres

MACHINERY

- **Engine Make:** MTU 16v 2000
- **Horsepower:** 2000
- **Drive Type:** Shaft drive

OTHERS

- **Aircon:** yes
- **Heating:** Yes



Azimut 86S

Broker Remarks

Azimut 86 Sport - 2006

All maintenances and updates of the boat have been done as cosmetically, mechanically and technically. The boat has been looked after by an experienced captain and crew all the time.

With her special Arneson Surface drive system, she catches high speeds under low fuel consumption.

Please contact us for further information about this beautiful, strong and fast Azimut 68 Sport.

The 86S has an aggressive and unmistakable profile, emphasized by the hull and the six centralized square windows which have become Righini's signature for the Open line. The superstructure's windows recapture the shark fin shape present on the flybridge models with a third oblong larger window, streamlining and offering optimum visibility. The superstructure has ample space inside which can be totally isolated from the external areas or alternatively completely integrated. The hard top integrated into the superstructure of the boat may be opened electronically by sliding towards the aft and concealing itself in the roof of the cockpit. The large door which gives access to the salon, when open, creates an overall space of 55sqm reaching as far as the stern.



Accommodation

Galley

COOKER : Siemens Electric Type

HOB / STOVE : Siemens

REFRIGERATOR : Siemens

DEEP FREEZER : Siemens

ICE MAKER : Vitrofrigo Ice Maker

WASHING MACHINE : Siemens

DISH WASHER : Siemens

Extras :

Isotherm Drink Fridge

Miele Dryer

Accommodation

SALOON : Large Saloon, Dining area and
Helm Station

BATHROOM : 4x

TOILET TYPE : Electric

CABINS :

1x Master Cabin Ensuite with TV+Music
System

1x VIP Cabin En-Suite with TV

1x Double Guest Cabin with TV

1x Twin Cabin En-Suite with TV

Disclaimer

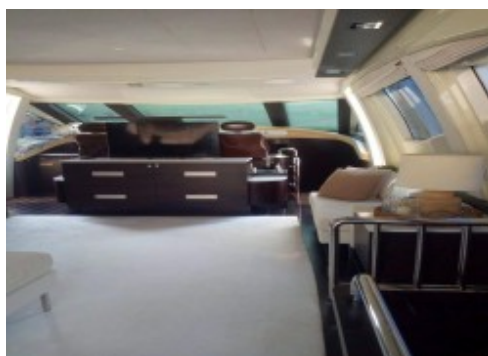
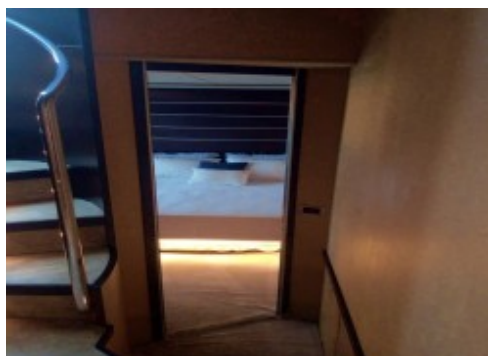
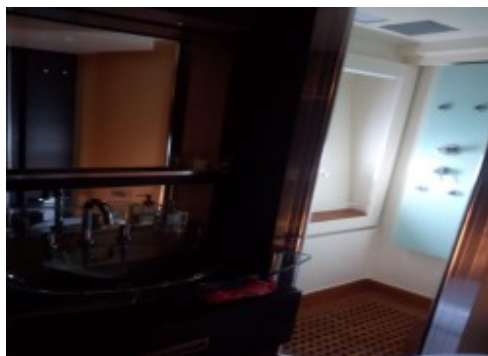
The Company offers the details of this vessel in good faith but cannot guarantee or warrant the accuracy of this information nor warrant the condition of the vessel. A buyer should instruct his agents, or his surveyors, to investigate such details as the buyer desires validated. This vessel is offered subject to prior sale, price change, or withdrawal without notice.

customContactInformation

+447734553064

Mechanical and Rigging

REFERENCE NO : MY-6925



FLAG : British Virgin Island
YEAR BUILT : 2006
LENGTH : 26.5 m
BEAM : 5.8 m
DRAFT : 1.6 m
BUILDER : Azimut ITALY
HULL MATERIAL : GRP (Fiber Glass)
DECK MATERIAL : Teak

Specification

BUILDER : Azimut
TONNAGE / DISPLACEMENT : 62000 kg
DESIGN : Stefano Righini
INTERNAL DESIGN : Carlo Galeazzi

Tankage

FUEL CAPACITY : 7200 lt
WATER CAPACITY : 1100 lt
HOLDING TANKS : 300 lt

Engine and Machinery

ENGINE TYPE : 2x MTU MTU 16V 2000
ENGINE POWER : 4000 hp
ENGINE DATE : 2006
OVERHAUL : Regularly Serviced. Last Major service done at 2000 hrs
CONSUMPTION : at Max speed 400l/hr at Cruising Speed 270 Hr
SPEED : Max 40 - Cruise 29 Knot knots
WATER MAKER : SeeMar 350l/hr (2021 model)
BATTERY CHARGER : Victron Energy 120Amp All in one
STEERING : Duo Position Hydraulic

GENERATOR : Onan 27 KWA 2020 Model (at 366 Hr) + Onan 19 KWA 2020 Model (at 474 Hrs)
INVERTOR : Victron Energy 5000 W
BOW THRUSTER : Hydraulic Bow Thruster
AIR CONDITION Cruisar Central System AC

PROPULSION PROPELLER : ARNESON SURFACE DRIVES / Twin Disc BCS System

TRIM TABS : Hydraulic

WATER HEATER : Yes

Air Compressor

Engine Hours : Port at 2095 - Starboard at 2065

Azimut 86S

EUR 1.100.000

Deck and Safety

CHAIN : 135m x 12mm

WINDLASS : Lofrans Electric

FIRE EXTING : Yes (Auto in ER)

LIFE RAFT : Yes (for 8 Pax)

LIFE JACKETS : Yes

SUN AWNING : Yes

WINCHES : 2x Mooring winches

ANCHORS : Delta 30 Kgs

PASARELLE : 4m Automatic

Extras:

Dinghy Garage with Automatic Door

Swimming Ladder

Hydraulic Aft Platform

Electric Winch in Garage for dinghy

Underwater Lights

Navigation and Electronics

LOG : Raymarine

GPS : Raymarine

DEPTH SOUNDER : Raymarine

CHART PLOTTER : 2x Raymarine E120

COMPASS : Plastimo

AUTO PILOT : Raymarine

VHF : Raymarine

RADAR : Raymarine

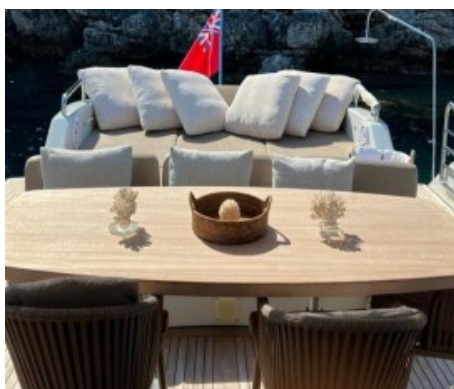
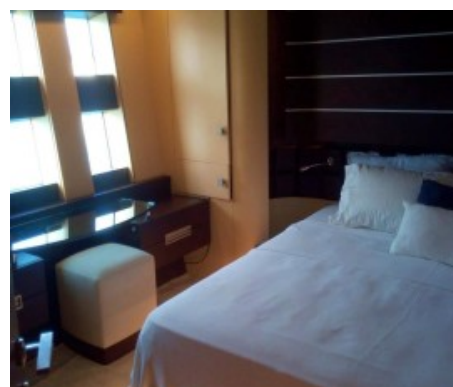
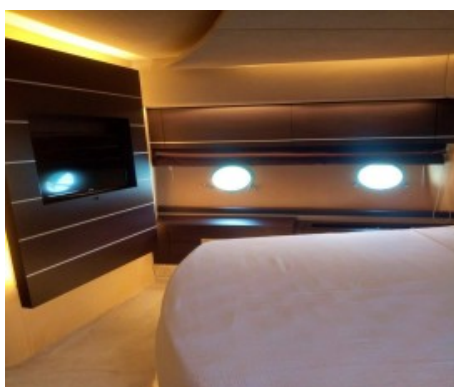
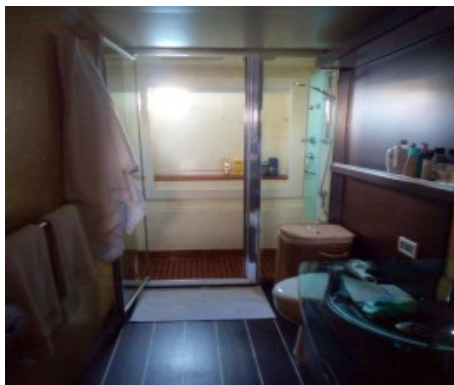
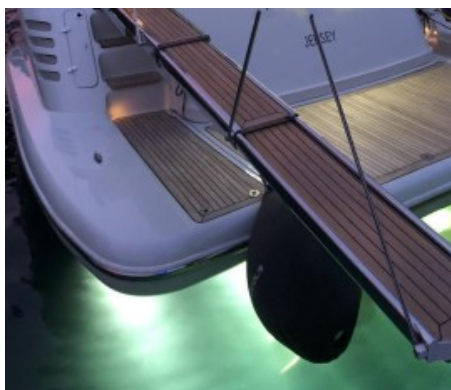
MUSIC SYSTEM : Aftech Music System

AIS : Raymarine

Extras :

FURUNO Satellite

Wifi Internet System



Contact

YACHTS.CO INTERNATIONAL LTD T/A NETWORK YACHT BROKERS CORFU CORFU OFFICE

Address:

Network Yacht Brokers - Corfu Sail the Blue, Gouvia Marina, Corfu, Greece

Telephone: 00(44)1792 209204

Email: info@nybcorfu.com

Disclaimer : Yachts.co International Ltd t/a Network Yacht Brokers Corfu offers the details of this vessel for sale but cannot guarantee or warrant the accuracy of the information contained in the specification or warrant the condition of the vessel or equipment. A buyer should instruct his agents, or surveyors, to investigate such details as the buyer desires validated. This vessel is offered for sale subject to no prior sale, price change, or withdrawal without notice.

