

Unclassified Wootton Bridge

YEAR 2005 | £9,995 | SWANSEA OFFICE



Summary

Manufacturer: Unclassified Wootton Bridge

Price: £9,995

Location: Swansea OFFICE

Year: 2005

ID no.: 051100

DIMENSIONS

- **LOA:** 20' 0" (6.10m)
- **Beam:** 7' 7" (2.31m)
- **Draft:** 4' 5" (1.35m)
- **Keel:** Long keel

ACCOMMODATION

- **Berths:** 2
- **Cabins:** 1
- **Heads:** 1
- **Showers:** 0

PERFORMANCE

- **Top Speed:** 6 knots
- **Cruising Speed:** 5 knots

TANKAGE

- **Fuel:** 0
- **Fuel Tank Size:** 50 Litres
- **Water Tank Size:** 0

MACHINERY

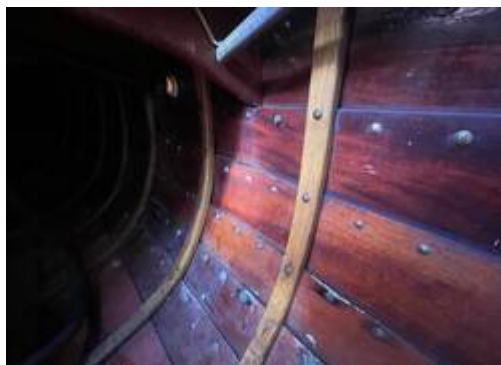
- **Engine Make:** Beta Marine
- **Horsepower:** 10
- **Drive Type:**



Unclassified Wootton Bridge

Broker Remarks

Nerissa is a traditional day sailer designed by Michael Webb and custom-built by Wootton Bridge Traditional Boat Builders in 2005. She offers the charm of a classic wooden vessel, similar in style to a Cornish Shrimper, but with the elegance of a lapstrake hull and teak decks. The current owner has maintained her well over the years, with key upgrades including new standing rigging in 2021, a Beta Marine engine, and new teak decks in 2017. While the exterior woodwork and paint would benefit from some attention, she remains a rare and appealing opportunity for an enthusiast looking to preserve and enjoy a classic craft.



Accommodation

Accommodation

V-shaped saloon seating, converting to two single berths

Stowage beneath berths

Brass port holes to port and starboard

Ship's clock and barometer

Jabsco marine toilet

Forward and aft quarter stowage

Mechanical and Rigging

Hull

Lapstrake hull in marine ply
Teak decks (replaced 2017)
Manual bilge pump
Electric bilge pump

Rigging

Gaff rigged cutter
Wooden mast, boom, gaff, and bowsprit
Standing rigging replaced in 2021

Sails

Mainsail – CAWS, cream (2005)
Inner foresail – CAWS, cream (2005) with Wykham roller reefing
Outer foresail – CAWS, cream (2005) with Wykham roller reefing
Sail cover (new 2017)

Engine and Systems

Beta Marine 10HP diesel (new 2017)
Approx. 50 engine hours
Fully serviced in 2021
2 x 12V batteries charged by alternator

Navigation

VHF radio with DSC
Echo sounder (new 2021)
Navigation lights



Cockpit and Deck

Anchor with chain and warp

Fenders and warps

Mooring lines

Boarding ladder

Cockpit cover (new 2017)

Winter cover (new 2017)

Cockpit cushions

Cockpit table

Teak cockpit grating



Contact

Yachts.co International Ltd

SWANSEA OFFICE

Address:

Network Yacht Brokers Swansea, Unit 1, Fishmarket Quay, Swansea, SA1 1UP

***Telephone:* 01792 465550**

***Email:* info@nybswansea.co.uk**

