

Jeanneau Merry Fisher

YEAR 2025 | £457,235 | CHICHESTER OFFICE



Summary

Manufacturer: Jeanneau Merry Fisher

Price: £457,235

Location: Chichester OFFICE

Year: 2025

ID no.: 031176

DIMENSIONS

- **LOA:** 41' 2" (12.56m)
- **Beam:** 12' 6" (3.80m)
- **Draft:** 3' 8" (1.13m)
- **Keel:** Deep V Planing

ACCOMMODATION

- **Berths:** 8
- **Cabins:** 3
- **Heads:** 2
- **Showers:** 2

PERFORMANCE

- **Top Speed:**
- **Cruising Speed:**

TANKAGE

- **Fuel:** Petrol 4-stroke
- **Fuel Tank Size:** 0
- **Water Tank Size:** 0

MACHINERY

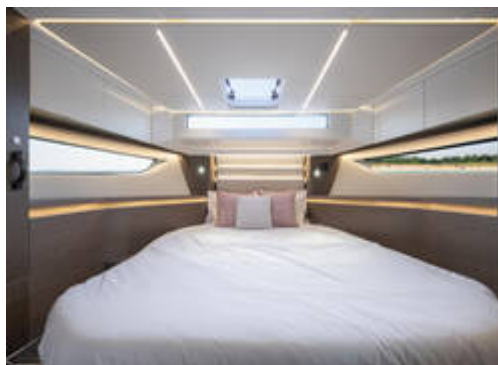
- **Engine Make:** Yamaha 300SBW
- **Horsepower:** 300
- **Drive Type:** Outboard



Jeanneau Merry Fisher

Broker Remarks

***** Part exchange considered ***** The specification of this boat is for this exact example. Further custom options can be added by local professionals to create your dream yacht! She can be commissioned and made ready for the beginning of Spring! £457,235 ex UK VAT. Exportation to the EU and further afield is possible and can be arranged by us. After the successful launch on the Merry Fisher 1295 flybridge in 2022, Jeanneau announced the launch of the flagship model that's now available in the coupe version. With her three cabins and two head compartments, she features all the elements that make the Merry Fisher 1295 a success; a panoramic view over the water, large windows in the hull, a forward owner's cabin with separate shower and two guests cabins. The U-shaped galley is well equipped with ample storage, it opens onto the cockpit and external living areas which creates an inviting gathering spot. A swivelling pilot seats allows for easy interaction with guests in the saloon whilst a cozy sofa allows for comfortable lounging. The interior fit and finish have been carefully crafted to offer a higher quality of living. She has an abundance of deck space which has been utilised particularly well. The electronically controlled side terrace opens up to starboard which expands the spacious aft cockpit. Portside, the side door allows for easier access aboard. Forward on the bow there are three integrated sun loungers to relax on. Taking inspiration from larger yachts the Merry Fisher 1295 Coupe is able to be equipped with an integrated joystick, gyroscopic stabiliser, air conditioning, generator and more. With high performance and reliable outboard engines delivering triple 300hp, the Merry Fisher 1295 coupe is sure to impress. Please call us on 01243 550042 for more information.



Accommodation

Large main forward cabin with double berth and ensuite access to heads with separate shower compartment

Twin port cabin

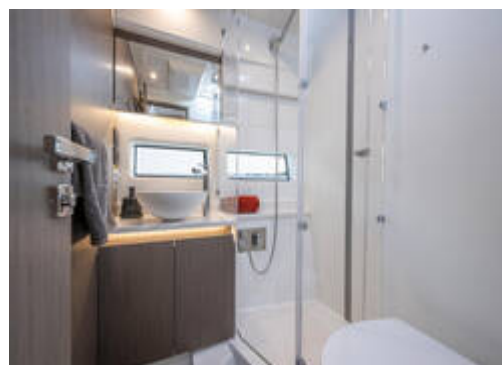
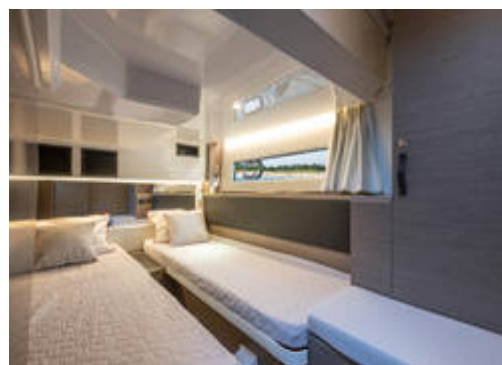
Twin starboard cabin

Day heads with separate shower compartment

Mechanical and Rigging

Engines:

Triple Yamaha 300SBW in white with integrated joystick
Variable bow thruster for Yamaha joystick



Trim level premiere:

Including:

- Control of windlass and chain counter at the helm station
- Front sunlounge seatings for 3 persons
- Ambiance LED lights (saloon & cabins)
- LED ambiance lights in cockpit floor
- Removable carpets in corridors and cabins
- Twin drawer stainless steel fridge 144L(in lieu of standard fridge 130L)
- Electrical trim tabs LENCO
- Sliding window on portside
- Aft and bow cockpit cover

Comfort Pack:

Including:

- Dockside freshwater inlet
- Deck searchlight
- 2 aft cockpit worklights
- Slatted bed base in owner's cabin

Electronic Pack Garmin:

Including:

- GARMIN GPSMAP 1223xsv
- GT15M-IH transducer
- Display of Yamaha engines information on Garmin screen
- Garmin rear view camera
- Garmin fantom 18 radar
- Garmin VHF 315i

Audio Pack Fusion:

Including:

- FUSION RA-210 + bluetooth + USB plug
- 2x2 speakers FUSION XS-CLASSIC (2 inside, 2 aft cockpit)
- Connection for GARMIN screen display

Full Inventory:

Fabric upholstery in saloon

Mooring kit

Anchoring kit

Stainless steel bow protection

Sunbeds for front cockpit

Storage rack on the roof for stand up paddle boards
Wood aft cockpit table with telescopic legs for sunpad
Bow cushions on anchor locker
Semi-transparent external curtains
2 solar panels on roof
Pre-fit generator Panda diesel
Microwave oven 230V
Air conditioning 40kBTU 220V shore power and generator
Double berth complement in saloon
Removable carpet set in saloon and stairs
TV pre-fit 230V saloon + front cabin
Teak on the aft cockpit floor swim platforms and terrace
Teak on starboard sidekick and front cockpit

Contact

**Blackrock Yachting Limited t/a Network Yacht
Brokers Chichester**

CHICHESTER OFFICE

Address:

Network Yacht Brokers Chichester Unit D3 Chichester Marina Chichester PO20 7EJ

***Telephone:* 01243 550042**

***Email:* chichester@networkyachtbrokers.co.uk**

