

Bruce Roberts Spray

YEAR 2010 | £89,999 | LYMINGTON OFFICE



Summary

Manufacturer: Bruce Roberts Spray

Price: £89,999

Location: lymington OFFICE

Year: 2010

ID no.: 04588

DIMENSIONS

- **LOA:** 45' 0" (13.72m)
- **Beam:** 15' 0" (4.57m)
- **Draft:** 4' 11" (1.5m)
- **Keel:** Long keel

ACCOMMODATION

- **Berths:** 5
- **Cabins:** 3
- **Heads:** 2
- **Showers:** 2

PERFORMANCE

- **Top Speed:** 7
- **Cruising Speed:** 6

TANKAGE

- **Fuel:** Diesel
- **Fuel Tank Size:** 0
- **Water Tank Size:** 750 Litres

MACHINERY

- **Engine Make:** Ford
- **Horsepower:** 80
- **Drive Type:** Direct



Bruce Roberts Spray

Broker Remarks

The Bruce Roberts Spray 40 is a true blue water cruiser able to take whatever weather and sea conditions she finds herself in. Her long keel and steel construction makes her a safe, sturdy and comfortable cruising sailing yacht. White Dolphin is fitted out with high quality teak joinery throughout which gives her a extremely warm and cozy atomsphere, ideal for long periods at sea or in harbour. She would be an perfect liveaboard yacht. She comes with a very powerful Ford Dover 80hp engine with low hours, which has been regularly serviced. Her sails are all in excellent condition . In fact her condition overall is excellent as she has been very lightly used. She has full navigation electronics, a generator and shore power along with a pressurized hot water system and hot air heating, in fact everything necessary to keep the most demanding crew happy. This is a proven and tested Bruce Roberts design that is ready for adventures anywhere in the world. She can be viewed afloat in Lymington. Please call Howard Ross on 07590 47548 for more information and to arrange a viewing.



Accommodation

Double aft cabin with en suite heads and shower
Forward V berth with en suite heads and shower
Saloon with Mikuni heating, TV, fold down table, seating

Galley with 2 burners gas hob and hotplate
Oven and grill
water cooled refrigerator
2 bowl stainless steel sink and worktop

Mechanical and Rigging

Ketch Rigged

Mainsail, Mizzen, Staysail, headsail

All sails laundered 2021

Slab reefing

Sail bags and Lazy Jacks

Long keel

Ford Dover 80hp diesel engine

Paguro 4000 4kva generator

Engine and Generator serviced 2022

Mikuni Warm air Diesel Heating

Shaft drive

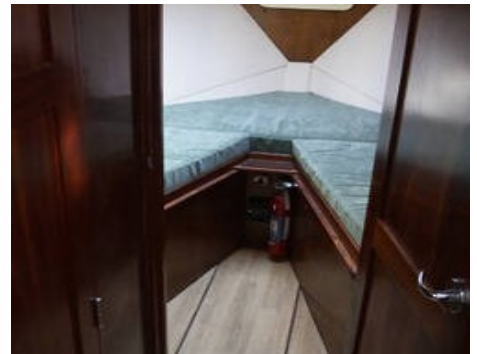
Aqua drive shaft

Hurst hydraulic gearbox

Battery charger

3x electric bilge pumps

2x manual bilge pumps



Full Navigation equipment
Simrad DS44 plotter/gps/radar x2
Simrad VHF
Simrad RS87 radio/telephone
Simrad AP26 Autopilot
B&G Hydra 2000 wind/speed/depth

Liferaft (requires service)
75lb CQR anchor
Fisherman anchor
60m anchor chain
Electric anchor windlass with both windlass and
helm controls (new 2020)
Full cockpit enclosure
Warps and fenders
Boarding ladder
Swing davits



Contact

Breeze Sports Ltd t/a Network Yacht Brokers Lymington LYMINGTON OFFICE

Address:

Howard Ross, Network Yacht Brokers Lymington, Marine House, Quay Road, Lymington, Hants, SO41 3AT

Telephone: 01590 671381

Email: lymington@networkyachtbrokers.co.uk

