

Jeanneau 60



YEAR 2023 | £1178416 | VAT NOT PAID | LARGS OFFICE



Summary

Manufacturer: Jeanneau

Price: £1178416

Location: Largs

Year: 2023

ID no.: 7653

DIMENSIONS

- **LOA:** 60' 0" (18.29m)
- **Beam:** 17' 1" (5.21m)
- **Draft:** 6' 11" (2.11m)
- **Keel:** Fin Keel

ACCOMMODATION

- **Berths:** 6
- **Cabins:** 3
- **Heads:** 3
- **Showers:** 3

PERFORMANCE

- **Top Speed:**
- **Cruising Speed:**

TANKAGE

- **Fuel:** Diesel
- **Fuel Tank Size:** 378 Litres
- **Water Tank Size:** 904 Litres

MACHINERY

- **Engine Make:** Yanmar LA4L150CR
- **Horsepower:** 150
- **Drive Type:** Shaft drive

OTHERS

- **Aircon:**
- **Heating:**



Jeanneau 60

Broker Remarks

Her sleek and elegant lines, combined with the versatility of an ingenious layout, enable her to suit all cruising styles. The JEANNEAU YACHTS 60 has been designed to be tailored to satisfy all preferences and cruising lifestyles. She allows numerous choices, such as an arch, a hardtop, an exterior galley, releasable forestay, furling mast, with which you would transform her from a sporty Mediterranean yacht to a fully-fledged offshore cruiser for longer voyages.

Deck plans and interior layouts are enhanced by high-performance technology and some of the finest materials. Our quest for unprecedented comfort onboard is paired with our desire to offer a yacht demonstrating best in class sailing abilities. The proportions are perfect, thanks to its maximized waterline versus overall length and carefully balanced distribution of living space.

The deck, with its contemporary style, gives this large yacht timeless appeal. The innovative deck layout features an inverted bow, a hull chine, an integrated bowsprit, a high sheer line, as well as walk-around sidedecks, making movement about the boat easy. The longitudinal garage accommodates a 10-foot tender that can be launched and retrieved effortlessly



The **JEANNEAU YACHTS 60** combines internal expertise of the **JEANNEAU** Design department, sharp design by Andrew Winch, and complete mastery of naval architecture by Philippe Briand.

Accommodation

The JEANNEAU YACHTS 60 can be split into four living areas, each offering multiple options: the forepeak, the forward cabins, the salon with the forward galley, and the aft cabins. The forepeak: three versions are possible, with a large sail locker, a skipper cabin, or a sixth cabin. Next, two versions of the forward area are possible: an owners' cabin or two cabins, each with a double berth. The bulkhead that divides the two forward cabins can be slid forward into a dedicated storage space creating one open space. Then one berth can be transformed into a sofa, creating a suite on demand.

Three possible layouts are available for the starboard side of the salon: a version with a sofa and adjacent chart table, a lateral twin bunk cabin, or an open plan version that could accommodate two free-standing armchairs. Finally, the aft living area can be configured as either an owner's cabin or as two cabins, featuring one double berth on starboard, and a twin bunk to port.

Mechanical and Rigging

{MECH_FIRST}



Shoal (2.25m) Wing Keel, Cast Iron
 1 Front Owners Cabin / 2 Aft Cabins / 3 Heads
 / White Oak
 Sail Locker
 Upholstery Marlin Ivory
 Tender Pack
 Code 0 Rigging
 Fittings for Asymmetrical Spinnaker and Code 0
 2x 70-2 Staeh Electric Genoa Winches
 Self Tacking Jib in Prordial - Furling and
 Classic Mast
 Code 3 on Furler
 Prordial Furling Mainsail
 Stainless Steel Cleats
 Mooring Kit
 Anchoring Kit
 Cockpit Bench
 Polyester Arch For Mainsail Sheet
 Sprayhood for Arch Version
 Sun Awning on Foredeck with Carbon
 Removable Poles
 Lateral Boarding Ladders
 Covers for Helm Stations
 Protective Covers for Cockpit Tables
 Rigid Hardtop Bimini with Electric Opening
 Aft Cockpit Bench with Galley Teak - Includes
 Fridge with Drawer, Plancha and Sink
 Hydraulic Retractable Gangway
 Port Side Electric Cockpit Tables
 Composite Steering Wheels (2)
 Retractable Stern Thruster
 Generator 11Kw 230V 50Hz
 Luxury Lighting in Cabins
 LED Lighting in Spreaders
 Vertical Fridge/Freezer 300l
 Air Conditioning
 Fans in Cabins

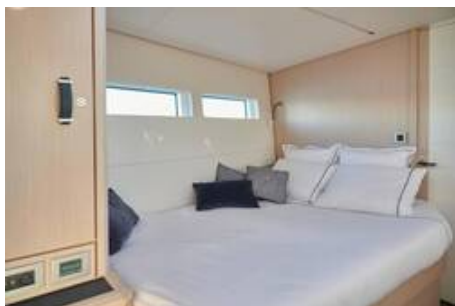
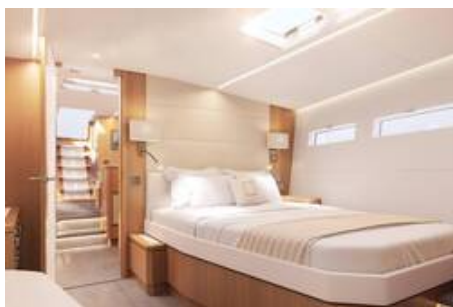
Mattress Battens in Owners Cabin
 Folding saloon Table on Telescopic Leg
 Rope Cutter D40
 I-Deck Side Decks

Electronic Pack Ocean

Raymarine 170's Multi + Depth - Speed Sensor
 + Masthead Wind Sensor
 Raymarine RAY90 VHF
 AIS 700 Raymarine Transceiver
 2nd Raymarine VHF Handset at the Starboard
 Helm Station
 Raymarine p70s Autopilot
 Smart Control Raymarine Pilot Control
 2x GPS Axiom
 Pro12 Multifunction Touchscreen Display with
 WIFI
 Raymarine Quantum Doppler Radar
 Cartography Avionics Large Blank

Euroyachts Disclaimer

The Company offers the details of this vessel
 in good faith but cannot guarantee or warrant
 the accuracy of this information nor warrant the
 condition of the vessel. A buyer should instruct
 his agents, or his surveyors, to investigate
 such details as the buyer desires validated.
 This vessel is offered subject to prior sale,
 price change, or withdrawal without notice.



Contact

LARGS OFFICE

Address:

The Boat Showroom, Largs Yacht Haven, Irvine Road, Largs, KA30 8EZ

Telephone: +44(0)1475 687204

Email: info@euroyachts.com

Disclaimer : The company offers the details of this vessel for sale but cannot guarantee or warrant the accuracy of the information contained in the specification or warrant the condition of the vessel or equipment. A buyer should instruct his agents, or surveyors, to investigate such details as the buyer desires validated. This vessel is offered for sale subject to no prior sale, price change, or withdrawal without notice.

