

Jongert Trewes Clipper

YEAR 1972 | €178,500 | VALENCIA OFFICE



Summary

Manufacturer: Jongert Trewes Clipper

Price: €178,500

Location: Valencia OFFICE

Year: 1972

ID no.: 446

DIMENSIONS

- **LOA:** 57' 5" (17.50m)
- **Beam:** 14' 9" (4.50m)
- **Draft:** 7' 10" (2.4m)
- **Keel:** Long keel

ACCOMMODATION

- **Berths:** 10
- **Cabins:** 3
- **Heads:** 3
- **Showers:** 2

PERFORMANCE

- **Top Speed:**
- **Cruising Speed:** 8/9 knots

TANKAGE

- **Fuel:** Diesel
- **Fuel Tank Size:** 3000 Litres
- **Water Tank Size:** 2000 Litres

MACHINERY

- **Engine Make:** Mercedes Benz 135
- **Horsepower:** 140
- **Drive Type:** Shaft drive



Jongert Trewes Clipper

Broker Remarks

This **Jongert Trewes Clipper 59** is a completely refitted Jongert combining great comfort with high performance sailing while maintaining the classic style of the Jongert 'Traditional Line.' With her traditional lines and maritime interior, the SAMARA stands for the timeless look of Jongert yachts. She offers comfort and pleasure. Thanks to its solid maintenance over the years and a completed 12 month refit in 2007 to modernize her extensively, this beautiful **Jongert Trewes Clipper 59 for sale** is now 'ready to go around the world'. The vessel has been completely re-fitted between 2007 and 2012. New paint had been applied in 2015. The sailing yacht is strong in construction and suitable for pleasure cruising and capable of sailing open seas. If you like sailing, comfort and adventure, this **Jongert Clipper 59** is ideal for you. With a very reasonable price, she is a great opportunity and not to be missed.

Viewings are available through Network Yacht Brokers.



Accommodation

This beautiful yacht's layout consists of a V berth at the fwd end, and a toilet compartment aft of it. A storage locker for the sails is located fwd of the V berth. The space under the berths are used for storage spaces. Aft of this is a 2 single berth cabin on the stbd side. Another single berth cabin is located on the port side. A toilet compartment is located opposite the cabin. The galley, which is on the stbd side, consists of an electrical hob, microwave oven and sink and freezer. Shelves for storage are fitted on top of the galley. A fridge / freezer is also fitted in the galley.

At the aft end, there is the saloon with a U shaped seat, table and navigation table. The radio/navigation equipment and chart table are on the port side. The colour scheme is green with beautiful wood.

Mechanical and Rigging

The vessel has been completely re-fitted between 2007 and 2012. New paint had been applied in 2015.

Engine

The boat is propelled by a 6 cylinder Mercedes diesel engine developing 140 H.P. (78 KW). It drives a three bladed propeller through line shafting and is located in a compartment just beneath the cockpit. The engine was manufactured in 1972.

Electrics

The electrical supply is 12 V, 24 V, 110 V and 220 V due to the Victron Inverters.

It has shore supply.

Two battery chargers and 2 inverters are fitted on board.

A Northern Lights 7 KW generator is fitted in the engine compartment.

Ten batteries are fitted on board. The supply the power to start the engine, generator, bow thruster, and auxiliaries.

The electrical wiring and panel were found to be in good condition.

The electrical circuits are protected by circuit breakers.

2 Webasto air conditioner are fitted in the cabins.

The yacht has two bow thrusters fitted.

Deck

Deck fittings consists of an anchor winch and anchor and chain rigged forward.

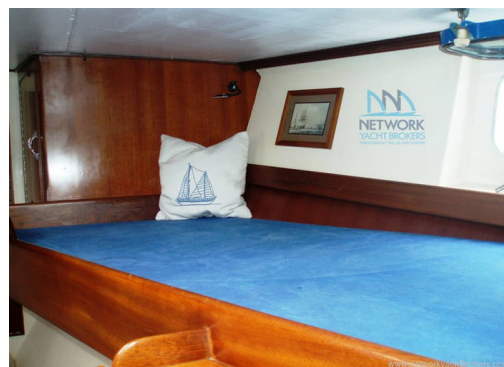
The pulpit and lazarette railings and handrail stanchions are made of tubular stainless steel.

The teak main deck and the deck fittings were in a generally satisfactory condition.

Rig and Spars

Mast and Standing Rigging

The mast and Mizzen were inspected for corrosion and other damage. None identified. The stainless steel wires were inspected and no broken strands



Navigation Aids

VHF Icom 602. with DSC
SSB Icom 802.
Radar Furuno 1834.
GPS Furuno.
Navnet Furuno C-Map.
Auto Pilot Nav Pilot.
Two Sonar
Tri data.
Rudder Indicator.
Compass.
Wind Instrument.

Tankage

Two water tanks (capacity 2000L)
Fuel tank (capacity 3000 L)
200 L black waters

Water System

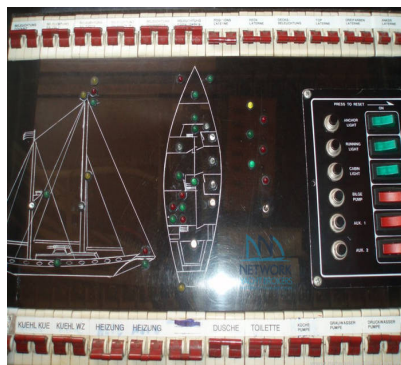
Water Pressurised
Water heating system

General Equipment

Two bilge pumps.
Sprayhood.
Sun Awning.
Mooring wraps.
Eccho Pro 900 140 L/hr Water maker.
Two Victron Multiplus 220/110/24/12 V.
Two Webasto heaters 5000.
Two air conditioners.
Two refrigerators with digital Thermo control.
Hydraulically steering system VETUS.
New Triton electric oven.
Flat screen TV.
Ten fenders.
Two davits and passarella.

Safety Equipment

3 x Fire Extinguishers.
Fixed fire extinguisher in the engine compartment.
Liferaft for six persons.
Lifejackets
One Light lifebuoy.
Set of Flares.
Horseshoe buoy c/w floating light.
A rubber dinghy and a 5 H.P. Johnson outboard motor are placed on board



Contact

Network Yacht Brokers Valencia

VALENCIA OFFICE

Address:

NYB Valencia Ampliación RCNV, 18 Camino de canal 91 46024 Valencia

***Telephone:* +34 722 18 68 84**

***Email:* sara@nybvalencia.com**

