

Amel Sharki

YEAR 1983 | €85,000 | NYB LEFKAS OFFICE



Summary

Manufacturer: Amel Sharki

Price: €85,000

Location: NYB Lefkas OFFICE

Year: 1983

ID no.: 22F9445589

DIMENSIONS

- **LOA:** 39' 2" (11.95m)
- **Beam:** 11' 10" (3.60m)
- **Draft:** 5' 11" (1.8m)
- **Keel:**

ACCOMMODATION

- **Berths:** 9
- **Cabins:** 2
- **Heads:** 1
- **Showers:** 1

PERFORMANCE

- **Top Speed:**
- **Cruising Speed:**

TANKAGE

- **Fuel:** Diesel
- **Fuel Tank Size:** 300 Litres
- **Water Tank Size:** 700 Litres

MACHINERY

- **Engine Make:** Yanmar
- **Horsepower:** 54hp
- **Drive Type:** Shaft drive



Amel Sharki

Broker Remarks

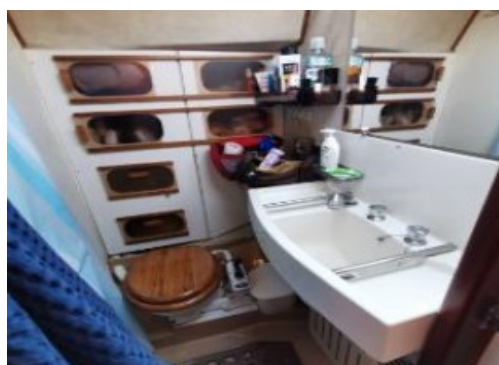
The Amel Sharki is a blue water cruiser, known for its high standards of construction. It's safe, strong, and low maintenance. Ideal for long-distance cruising with family or a small crew, this yacht is equipped with an electric genoa furler and oversized sheet winches for easy handling in any conditions.

Broker's Remarks: Experience exceptional craftsmanship and reliability with this Amel Sharki. Perfect for those seeking adventure on the open seas.

Highlights:

- High-quality Amel construction
- Safe and strong design
- Low maintenance
- Ideal for long-distance cruising
- Electric genoa furler
- Oversized sheet winches for easy handling

Contact us today to arrange a viewing and make this exceptional cruiser yours.



Accommodation

TANKAGE

Fresh water tank: 700 l

Fuel 750L

Holding tank x 1`

SAFETY

Liferaft

Tender

ACCOMMODATION

Cabins: 2

Berths: 9

Certified No. of Persons: 9

Bathroom: 1

TENDER - Included

MISCELLANEOUS

Annually inspected and maintained by professionals

Flag: German

Hull professionally painted 2019

HISTORY She has been owned and meticulously maintained by its current owners. It has been sailed in various locations including the Mediterranean.

Disclaimer The Company offers the details of this vessel in good faith but cannot guarantee or warrant the accuracy of this information nor warrant the condition of the vessel. A buyer should instruct his agents, or his surveyors, to investigate such details as the buyer desires validated. This vessel is offered subject to prior sale, price change, or withdrawal without notice.

Mechanical and Rigging

CONSTRUCTION

Mid-cockpit ketch with a moderate long keel
Designed in 1978 by Henri Amel and Jacques Carteau
Hull number 78, launched in summer 1983
Material: GRP

DIMENSIONS

Length: 11.95 m
Beam: 3.60 m
Draft: 1.80 m

MECHANICAL

Engine: Yanmar 54 HP, installed in 2013, 1,100 hrs
Bow thruster

PERFORMANCE

Sail area: 78 sqm
CE Design Category: A - Ocean

SAILS

Main sail new 2024
Genoa replaced 2018
Rigging replaced 2019
Mizzen sail requires replacement
Lazyjack
Roller genoa
Blister

ELECTRICAL

12V/220V inverter for electrical small devices
Domestic batteries - 3 x 110Ah - 2019
Engine start - 1 x 90Ah - 2022
Bow thruster - 2 x 110Ah
Inverter - Victron - 2022
Shore power and cable

NAVIGATION

GPS (2 units) Furuno
Echo sounder
VHF radio - Icom - 2019
Radar
AIS - 2022
Electronic chart
Weather receiver
Weather fax
Chart plotter - Axiom A7 - 2022
Log/Speed - Raymarine
Wind - Raymarine - 2019
Wind at top of mast - 2019
Compass - Raymarine

DECK

Electric anchor windlass
Steering: Wheel control
Fixed sprayhood
Sunshade
Cockpit shower
Warm water system

Contact

**Greek Yacht Sales Ltd. t/a Network Yacht Brokers
Lefkas**

NYB LEFKAS OFFICE

Address:

Network Yacht Brokers Lefkas Cleopatra Marina Preveza 48100 Ionian Islands Greece

***Telephone:* UK+ 44 203 051 0525 / Mob.+306945347870**

***Email:* info@nyblefkas.com**

