

Amel Super Maramu 53



Year:	1992	Heads:	2
Location:	Preveza	Cabins:	2
LOA:	52' 6" (16.00m)	Berths:	8
Beam:	15' 0" (4.57m)	Keel:	Fin keel
Draft:	6.7' 0" (2.04m)	Engines:	1

Remarks:

Amel Super Maramu 53 -Accolade is a true Blue-water go anywhere cruising yacht. She has been well maintained and has been lightly used in recent years. Despite her size she is easily managed with electric in mast furling main, genoa and mizzen.

The Amel Super Maramu Sailing Yacht has become a famous globetrotter, designed by Henri Amel & Jaques

£164,500 Tax Paid

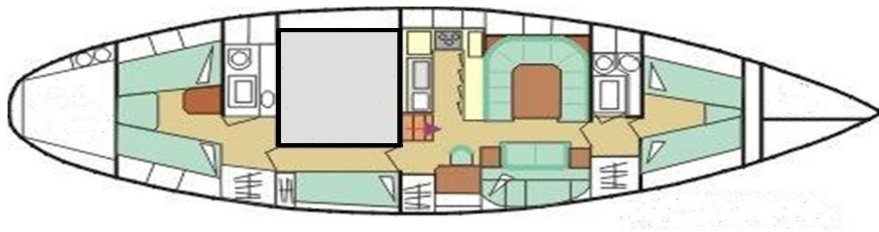
E: info@nyblefkas.com **T:** UK+ 44 203 051 0525 / Mob.+306945347870

www.networkyachtbrokers.com | over 700 boats listed

REF: 22F8347848



AMEL SUPER MARAMU



Mechanical and Rigging

DIMENSIONS

- LOA - 15.90
- LWL – 12.60
- Beam - 4.60
- Draft - 2.01
- Displacement - 16,000 kg
- Headroom - 2.0
- Air draft - 20.0
- Sail area - 120.96

CONSTRUCTION

- Type - Cruising Yacht
- Builder - Amel
- Model - Super Maramu 53
- Hull colour - White
- Superstructure colour - White
- Hull / keel Form - Wing keel
- Rudder type - full skeg
- Steering Type - Wheel
- Superstructure materials GRP
- Deck materials GRP

TANKAGE

- Water capacity 1000L
- Fuel capacity 600L

MECHANICAL

- Main engine manufacturer - Perkins - 1992
- Main engine model - Prima M80T
- Main engine power - 80 HP
- Number of main engines - 1
- Date engine last serviced - 2022
- Drive type -Amel Integral Leg Drive
- Propellor(s) type - 3 Blade Feathering
- Cooling - sea water
- Main engine fuel - diesel
- Cruising speed – 7kt
- Maximum speed – 8.5kt
- Bowthruster - Amel electric retractable
- Bowthruster 10HP

ELECTRICAL

- Generator -Diesel – Fisher Panda 6.5 KV

- Engine battery x 12v - new
- Domestic battery x 4 110ah – 2019
- Battery charger - Victron Energy SKYLCA-TG 24v 50amp
- Inverter - 24v/220v - 600w
- Shorepower system
- Shorepower cable
- Solar panel - Logic STP 20w
- Shorepower cable

Inventory

RIG AND SAILS

- Type of Rig - ketch
- Spars - Aluminium
- Standing Rigging – Original
- Running Rigging
- Mainsail Reefing – in mast Electric furler
- Lines lead aft to cockpit
- Furling Headsail

SAILS

- Main – original – fair condition
- Genoa – Crusader - 2017 – Good condition
- Cruising Chute – balloonier – good condition
- Mizzen staysail

DECK GEAR

- Decking Type - GRP
- Anchor Locker
- Anchors x 4
- Anchor Chain x 80m
- Anchor Windlass - Lofrans
- Winches Primary
- Winches secondary
- Pushpit / Pulpit
- Swim ladder
- Boarding Ladder
- Cockpit / Deck Shower
- Cockpit Table
- Cockpit Lockers
- Anchor washer/deck hose
- Cockpit cushions

NAVIGATION EQUIPMENT

- Chart Plotter – Raymarine
- Radar - Furuno
- Autopilot - Autohelm
- VHF Radio
- Echo Sounder – B&G
- Log / Speed – B&G
- Wind Instrument – B&G
- Wind Indicator at Masthead – B&G
- Compass
- Barometer
- Clock

Accommodation

The Wheelhouse

This is covered as is the helm because the cockpit is forward of the aft cabin. At the helm, you are offered shelter under a semi-hard top. Behind the cockpit below the deck is the aft cabin where the roof acts as a dingy storage area. The bathing platform along the side decks and the transom are very easy.

Below Deck,

The interior wood is build using traditional mahogany. During our inspection, we noted that the varnish it is in an exceptional condition throughout the yacht. Layout. Comprising of a conventional cruising yacht layout to port in the saloon, she also has a U shaped galley. Key features of the saloon are the fully retractable shelf with a single bed that slides out.

Starboard aft opposite the kitchen is a full-size navigation table. The forward cabin has a nice v berth, and it is convertible into a double. The owner's rear cabin has a full-size double bed with access along a single berth companionway. The back cabin offers excellent privacy to the ensuite heads. When all the beds are used this yacht can sleep eight in great comfort.

- No. of Berths-8
- No. of Cabins x 3
- Upholstery
- Curtains
- Flooring - wood
- Saloon Table
- Hanging Lockers
- Wet Lockers
- Heating - diesel
- Number of Heads x 2
- Toilet Type - manual
- Shower x 2
- Hob
- Oven
- Grill
- Galley Sink
- Refrigerator & Freezer
- Water System - pressurised
- Hot water – calorifier
- Water maker
- Stereo
- TV
- DVD player

CANVAS

- Spray hood
- Bimini
- Cockpit Cushions
- Cockpit cover
-

SAFETY EQUIPMENT

- Life raft Out of service
- Lifebuoy
- Life Jackets x 6
- Fire Blanket x 1
- Bilge Pump(s) Manual
- Bilge Pump(s) Electric
- Epirb

DINGHY

- Dinghy - Zodiac
- Dinghy engine – Mercury 15 hp, Yamaha 2.5hp

Disclaimer

The Company offers the details of this vessel in good faith but cannot guarantee or warrant the accuracy of this information nor warrant the condition of the vessel. A buyer should instruct his agents, or his surveyors, to investigate such details as the buyer desires validated. This vessel is offered subject to prior sale, price change, or withdrawal without notice.

Remarks :

Amel Super Maramu 53 -Accolade is a true Blue-water go anywhere cruising yacht. She has been well maintained and has been lightly used in recent years. Despite her size she is easily managed with electric in mast furling main, genoa and mizzen.

The Amel Super Maramu Sailing Yacht has become a famous globetrotter, designed by Henri Amel & Jaques Carteau. This Yacht was built at Chantiers AMEL in La Rochelle in 1992.

GREAT BUY FOR ANYONE SERIOUSLY READY TO PURCHASE A TRUE BLUE WATER – LIVE ABOARD VESSEL

- EU VAT Paid
- Fully equipped Super Maramu with Bow Thruster & much more
- Huge Cockpit – Wide Walk Around Side Decks – Large Fore Deck – Aft Deck
- Aft deck, steps molded into hull to swim platform, SS railings surround entire vessel

- Ketch Rigged for Easy Sail Handling
- In-Mast electric furling for Main -Electric furler for Genoa - Electric winch for Mizzen sail
- All lines led aft for complete control from cockpit
- Well protected centre cockpit with hard dodger, and opening window at helm
- Easy to handle with limited crew
- Numerous storage lockers on deck and in cockpit
- Large Aft Stateroom with Queen Berth & en-suite Head and Shower
- Forward Guest Cabin Sleeps 2 also with en-suite
- Additional Pilot Berths in Companionway Leading Aft - and Pull Out in Saloon

The Amel Super Maramu 53 is an ideal layout for long range cruising. With the cockpit in the center of the boat (most stable part of the boat), the layout allows for easy access to the galley and saloon forward of the cockpit and easy access into the master cabin aft of the cockpit.

She was built to the highest standards by an old world company, and well designed for her intended purpose, and is now available for her next discriminating owner.

Contact: Network Yacht Brokers Lefkas Cleopatra Marina (Dock side) Aktio-Preveza Ionian Islands, Greece.

Tel: UK+ 44 203 051 0525 / Mob.+306945347870

Email: info@nyblefkas.com