



Nautor Swan 41



Year:	1973	Heads:	1
Location:	Preveza, Greece	Cabins:	2
LOA:	41' 0" (12.50m)	Berths:	8
Beam:	12' 0" (3.66m)	Keel:	Fin Keel
Draft:	6' 11" (2.1m)	Engines:	1

Remarks:

Nautors Swan 41 : beautiful example of this S&S designed Swan. This particular yacht has benefited from a total refit with particular attention to maintaining originality wherever possible. Work carried out in recent years include:

Hull -re-gelcoat

£89,950 Tax Paid

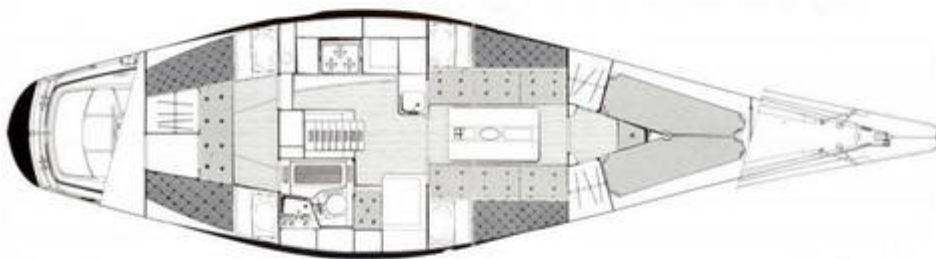
E: info@nyblefkas.com **T:** UK+ 44 203 051 0525 / Mob.+306945347870

www.networkyachtbrokers.com | over 700 boats listed

REF: 22620



NAUTOR SWAN 41



Mechanical and Rigging

DIMENSIONS

- LOA: 12.49 m
- LWL 9.22m
- Beam: 3.6 m
- Draft (max/fixed): 2.10 m
- Draft (min): 2.10m

CONSTRUCTION

- Type: GRP
- Builder: Nautor Swan
- Model: Swan 41
- Hull colour: White
- Hull/keel Form: Modified fin
- Rudder type: Blade
- Superstructure materials: GRP
- Deck materials: Teak
- Fuel capacity: 150 Litres
- Water capacity: 300 Litres
- Holding tanks: 38 Litre

MECHANICAL

- Main engine: Perkins
- Main engine model: 4108
- Main engine power: 50 hp
- Date engine last serviced: 2019
- Drive Type: Shaft
- Fuel consumption: 3 lph
- Cruising speed: 6.5 knots
- Maximum speed: 7 knots
- New engine mounts raw water pump and stern gland (2019)
- Engine rebuilt 2015
- Propeller: two blade bronze feathering with a rope cutter

ELECTRICAL

- Engine battery : 1 100 Amp/h (2016)
- Domestic battery : 3 x 100 Amp/H (2016)
- Battery charger: Sterling pro charge ultra
- Inverter: Sterling pro power S W
- Shorepower system
- Shorepower cable

RIG AND SAILS

- Type of Rig: Cutter
- Spars Make / Material: Selden mast & boom Aluminium
- Standing Rigging - replaced 2009
- Running Rigging – Good condition
- Mainsail Reefing – slab
- Stack-pack / Lazy jacks
- Furling Headsail
- Furling Staysail
- Spinnaker Pole
- Navtec Hydraulic Boom
- Hydraulic backstay adjuster.

SAILS

- Main: (2001) Good condition
- Genoa: (2001) North Good condition & No.1 Genoa Light
- Storm Sail
- Staysail (2017)
- Cruising chute

DECK GEAR

- Decking Type: Teak Replaced 2001 very good condition
- Anchor Locker
- Primary Anchor: Mantus CQR
- Anchor Chain / Warp: 80m x 10mm Stainless Steel
- Anchor Windlass: Lofrans Tigres
- Winches Primary: Lewmar 2x50 ST two speed & 2x 45 ST two speed
- Pushpit / Pulpit
- Cockpit Lockers: 3

Inventory

NAVIGATION EQUIPMENT

- GPS: Garmin
- Autopilot: Raymarine ST7000
- VHF Radio:IC – M504
- Echo Sounder: B&G
- Wind Instrument: B&G
- Wind Indicator at Masthead: B&G
- Compass: Ritchie
- SSB Radio Kenwood
- Card Radar Detector

SAFETY EQUIPMENT

- Life raft: Plastimo offshore 6 Man currently certified
- Lifebuoys: 1
- Life Jackets: 6
- EPIRB: 2011 McMurdo
- Search Light
- Radar Reflector
- Fire Extinguishers - #: 4
- Fire Blanket: 1
- Bilge Pump(s) Manual: 2
- Bilge Pump(s) Electric: 1

Note: Any safety equipment such as life rafts, flares etc. are left on-board as part of the sale of a used vessel may require routine servicing, replacement by the new owner and not to be used in any negotiations on price.

TENDER

- Dinghy : (2017) Nautend
- Dinghy engine : Honda 2hp

Accommodation

Summary of Accommodation:

- Nautor teak interior, with teak and holly sole.
 - The upholstery is cream in the saloon
 - Headroom is 6'2" at companionway.
 - The aft cabin offers two single berths with settee between, hanging locker and storage as well as two ports that open to cockpit and door to head and to main cabin.
 - Galley, port of companionway, is a cruiser's delight with ample storage space, three burner stove w/oven.
 - The head and nav area are located to starboard.
 - The head also has good storage and hot water hand held shower.
 - The navigation station is forward facing teak with large work area and plenty of light.
 - The main salon has two settee berths, with centerline drop leaf teak table.
 - Storage is abundant behind seat back, in the table and in bookshelves.
 - Forward cabin has two hanging lockers both and two berths that can easily be converted to a large v berth.
 - Sail storage beneath fwd berths as well as in the forward anchor rode locker.
-
- Cooker: Eno-3 burner plus Oven
 - Galley Sink
 - Cool box
 - Refrigerator
 - Water System – pressurised hot and cold
 - Hot water - calorifier new hot water heater
 - Stereo: with CD and AUX input
 - Fibreglass holding tank (2017)
 - Watermaker: Spectre

Remarks :

Nautors Swan 41

A beautiful example of this S&S (Sparkman & Stephens) designed Swan built to Lloyds specification. This particular yacht has benefited from a total refit with particular attention to maintaining originality wherever possible. Work carried out in recent years include:

- Hull -re-gelcoat
- Epoxy coating below the waterline
- Installation of Goyot opening hatch in heads
- Installation of a wood door in the forward cabin
- Engine: Perkins 4108 fully rebuilt (2015)
- Watermaker: Spectre

Swan yachts are iconic classics with a reputation for being both fast and comfortable under sail. Having beautiful lines, they have become a desirable classic, this swan is no exception.

There was a survey carried out in 2015 following the refit. The boat has been lightly used during the summers and wintered ashore each year. She is ashore now at Preveza, Greece

viewings can be arranged by contacting Network Yacht Brokers by email
info@nyblefkas.com

Extra details have been uploaded to the folder below copy and paste the URL below into your browser

<https://drive.nyblefkas.com/external/11e09835ddffae044938e6fcff4a52b0dcacb1b8547a2efc2ffd2034a1>

Contact: Network Yacht Brokers Lefkas Cleopatra Marina (Dock side) Aktio-Preveza Ionian Islands, Greece.

Tel: UK+ 44 203 051 0525 / Mob.+306945347870

Email: info@nyblefkas.com