

# LAGOON Lagoon 450

**YEAR 2014 | €399,500 | NYB LEFKAS OFFICE**



# Summary

**Manufacturer:** LAGOON Lagoon 450

**Price:** €399,500

**Location:** NYB Lefkas OFFICE

**Year:** 2014

**ID no.:** 22249

## DIMENSIONS

- **LOA:** 45' 10" (13.96m)
- **Beam:** 25' 10" (7.87m)
- **Draft:** 4' 3" (1.3m)
- **Keel:**

## ACCOMMODATION

- **Berths:** 9
- **Cabins:** 4
- **Heads:** 4
- **Showers:** 4

## PERFORMANCE

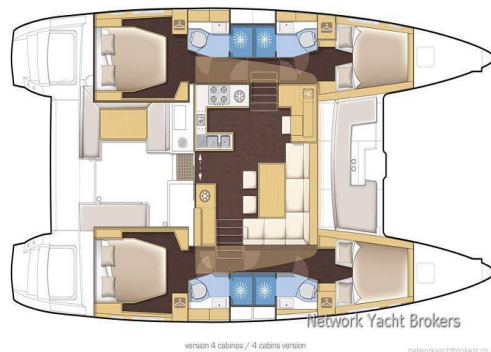
- **Top Speed:**
- **Cruising Speed:**

## TANKAGE

- **Fuel:** Diesel
- **Fuel Tank Size:** 2 Litres
- **Water Tank Size:** 2 Litres

## MACHINERY

- **Engine Make:** Yanmar
- **Horsepower:** 54
- **Drive Type:** Saildrive



# LAGOON

## Lagoon

### 450

## Broker Remarks

Network Yacht Brokers are proud to present this **Lagoon 450**. Launched in 2014. She is extremely well equipped and professionally maintained by her full time owner/skipper. This 4-cabin version yacht features everything you would expect from a top quality craft. The Lagoon 450 is the perfect balance of space, performance, functionality and ergonomics. This Lagoon 450 catamaran for sale is a rare beauty, ready to sail off into the sunset.

### FEATURES:

\* Full Raymarine electronics incl 2x12" Plotters\* 2x Yanmar 54HP (low hours)\* 480w Solar\* 90L watermaker\* SSB communication \* Electric Toilets\* FLYBRIDGE\* hard top bimini \* Twin stairways access Flybridge\* Seating 6 plus sunbeds\* Chartered briefly with owner skipper always on board\* Aluminium RIB dinghy and motor and everything on the wishlist. The VPLP architects, together with Lagoon and the Nauta Design design office, succeeded beautifully in developing a new 45' catamaran to replace the famous Lagoon 440 (more than 400 units sold!) Of course, the irreplaceable qualities of the Lagoon 440 have been retained as a starting point: a steering station on the fly bridge accessible from both sides of the cockpit, a forward cockpit, performance under sail ... and an incomparable comfort in the saloon and the cabins. Larger and with a bigger sail area, and also benefits from important improvements in terms of safety, performance and cruising comfort.





# Accommodation

## INTERIOR / DOMESTIC

No. of Berths- doubles/singles- 4 Doubles  
No. of Cabins- 4  
Headroom- 2.06m saloon 2.04M cabins  
Upholstery- Tissu Shark Brown-Very good  
Curtains/ Blinds- Full shades and blinds  
Flooring- Alpi chêne blond / Plancher Milano -as new  
Chart Table- nav stan saloon fwd  
Saloon Table  
Number of Heads- 4  
Toilet Type- New Planus Electric 4)  
Shower- 4  
Microwave  
Hob- 3 burners gas stove  
Oven  
Grill- Grill oven with s/s inside  
Galley Sink- Double s/s sink with hot/cold mixer tap  
Refrigerator- 2x inox + 1 x80L  
Water System- pressurised  
Hot water - immersion/calorifier- Quick 60 L  
Water Maker- DESSALETOR 90l 12v/230v  
Stereo  
TV- Flat screen

## INTERIOR

---

### Salon

Large main salon with panoramic view - standing headroom approx: 2,05 m / 6'9"  
Steel pillar with fabric cover  
Varnished coffee table that can be swapped with the large cockpit table  
Seating for 5 / 6 people  
Storage compartments under bench seats  
Locking aluminium sliding cockpit door with open/closed positions  
2 opening hatches on forward windows  
Curtains on forward salon windows

### Aft Cabins

Lagoon 450 Page 4 of 15  
Queen-size berth (2,04m / 6'7"x 1,60m / 5'2" at widest point)

1 low shelf

2 reading lights per berth  
2 bed tables with storage  
1 opening deck hatch  
1 opening port hole  
1 large hull window in plexiglass  
1 opening escape hatch  
Curtains on portholes, hatches and fixed one-way windows

**Forward cabins**

Transformable double berth or 2 simple berths  
double berth version 2.04 m x 1.63 m x 1.16  
on the floor / 6'7" x 5'3" x 3'8" on the floor  
2 drawers under berths  
2 space storages  
1 bookshelf  
1 bed table with storage and shoes storage  
Hanging lockers and shelves  
LED ceiling lights  
2 reading lights per berth  
1 opening deck hatch

Curtains on portholes, hatches and fixed one-way windows

1 mirror  
3 lockers storage under the berth

**Heads**

Moulded GRP units with white laminate walls  
– standing headroom 2,04m / 6'9"  
Washbasin with mixer tap / shower  
Full-size marine toilet  
1 holding tank with gravity drain/deck pump out in the aft port head  
Mirror  
Storage locker and 2 mirror doors  
Ceiling lights and spotlights over the mirror  
Forward heads access from cabin  
Synthetic resin countertop  
Separated shower  
Shower grating  
1 opening deck hatch  
Technical access under washbasin

**Galley**

Galley in main salon to starboard with direct access to cockpit through sliding window

# Mechanical and Rigging

## CONSTRUCTION

Type : Sailing Catamaran  
Builder / Designer: Lagoon  
Make / Model: 450  
Year Built: 2014  
Designer: Van Peteghem-Lauriot Prévost  
Where Built: France  
Construction Materials: Fibre Glass (GRP)  
Keel / Hull Form: Catamaran  
Steering Type: Duel Wheel  
Helm Position(s): Flybridge  
Deck Materials: GRP  
Hull Colour: White

## DIMENSIONS

LOA- 13.96 m  
LWL- 13.96 m  
Beam- 7.84m  
Draft- 1.30m  
Displacement- 15003 kgs  
Air draft- 129.87 m2

## ENGINES/MECHANICAL

Make & Model- 2 x Yanmar 4JH5E  
Year of Manufacture- 2014  
No. of Engines- 2  
HP (Each)- 2x 54 (hp)  
Engine Hours- 650  
Date Engine Last Serviced-2016  
Drive Type- Saildrive  
Fuel Type- Diesel  
Propeller Type- 2 blade aluminium

## TANKAGE

Fuel- 1040 L in 2 tanks  
Water - 350 L  
Holding tank

## ELECTRICAL & BATTERIES

Domestic Batt. (4) x 120 Amps Age: 2014  
Engine Starter Batt (2) x120 amps Age: 2014  
Charging System - Altenator plus capacity for spare  
Battery Charger

Solar Panels- 4 x 120W mounted on fly

### **SPARS / RIGGING**

Type of Rig- Sloop

Tripod aluminum mast with mainsail track and ball-bearing

Mainsail Reefing - slab/in-mast- Fully battened 3 reefs

Stack-pack / Lazy jacks

### **SAILS**

Main (Fully battened 3 reefs) (2014) Make: Dracon -High roach- Excellent

Genoa (2014) Make: Dracon with UV strip Excellent Condition

### **NAVIGATION**

Chart Plotter- 2x Raymarine E125 12" (1 Nav stn +1 Flybridge)

GPS

Radar- Raymarine

AIS- Raymarine

Autopilot- Raymarine

VHF Radio- Raymarine +DSC

Echo Sounder- Raymarine

Log / Speed- Raymarine

Wind Instrument- Raymarine

Compass

Barometer

Clock

### **DECK**

Decking Type- GRP non Slip

Anchor Locker

Anchors- 1xRochna 35kg+ 1 x Delta 25kg

Anchor Chain / Warp- 90m \*12mm +rope

Anchor Windlass

Winches- 6 (Main halyard electric)

Pushpit / Pulpit

Boarding Ladder

Cockpit / Deck Shower- Hot and cold

Cockpit Table

Cockpit Lockers- large

BBQ- Gas BBQ Cockpit area

Passerelle (Aluminium +teak)



- \* Twin deck access stairways from deck
- \* Large bench seat for 6 people
- \* Ergonomically-designed helm station with leathered wheel with brake, engine throttles, engine panels, hourmeters, compass, large instrument console for \*
- \* electronic displays, cup holders, rope storage
- \* Protection cover for helm position
- \* Space storage around staircases of the flybridge
- \* Sun pad place fwd of the helm station



**SAFETY**

Life raft

Lifebuoys

Life Jackets

Flares

EPIRB

Radar Reflector

Bilge Pump(s) Manual- 1 each hull

Bilge Pump(s) Electric- 1 each hull

**CANVAS**

Bimini- Hard top

**MISCELLANEOUS**

Outboard - Make- Suzuki 15hp

Age- 2014

Warps - number- Lots

Fenders - number- 8

Dinghy- 3D X-PRO3,60m—aluminium keel



# Contact

**Greek Yacht Sales Ltd. t/a Network Yacht Brokers  
Lefkas**

**NYB LEFKAS OFFICE**

***Address:***

Network Yacht Brokers Lefkas Cleopatra Marina Preveza 48100 Ionian Islands Greece

***Telephone:* UK+ 44 203 051 0525 / Mob.+306945347870**

***Email:* [info@nyblefkas.com](mailto:info@nyblefkas.com)**



