

Beneteau Beneteau Antares

YEAR 2004 | £59,500 | NYB LEFKAS OFFICE



Summary

Manufacturer: Beneteau Beneteau Antares

Price: £59,500

Location: NYB Lefkas OFFICE

Year: 2004

ID no.: 22244

DIMENSIONS

- **LOA:** 32' 8" (9.96m)
- **Beam:** 11' 0" (3.35m)
- **Draft:** 2' 9" (0.84m)
- **Keel:** Displacement

ACCOMMODATION

- **Berths:** 4
- **Cabins:** 2
- **Heads:** 1
- **Showers:** 1

PERFORMANCE

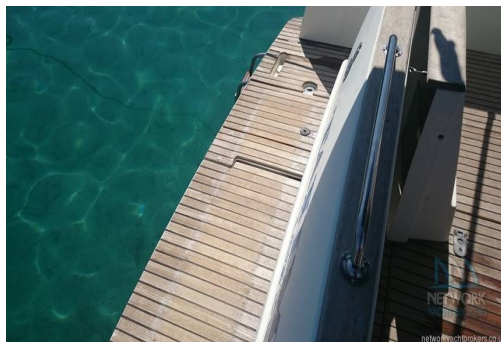
- **Top Speed:**
- **Cruising Speed:**

TANKAGE

- **Fuel:** Diesel
- **Fuel Tank Size:** 600 Litres
- **Water Tank Size:** 220 Litres

MACHINERY

- **Engine Make:** Nanni 4.390 TDI
- **Horsepower:** 200
- **Drive Type:** Shaft drive



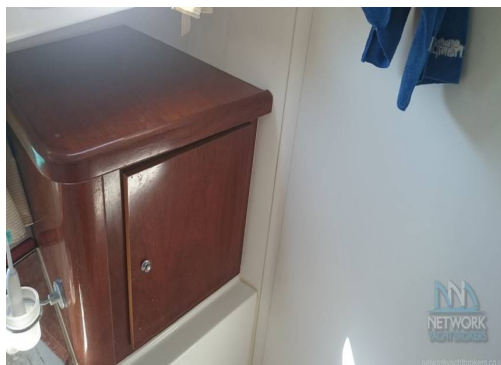
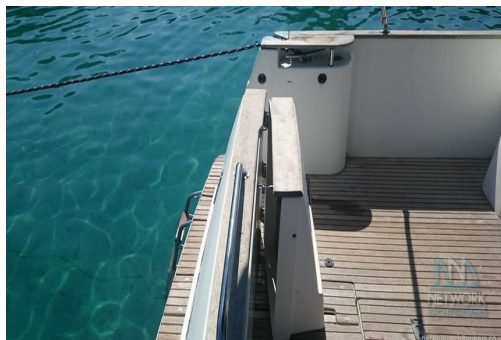
Beneteau Beneteau Antares

Broker Remarks

Beneteau Antares 9.80. A well-equipped flybridge cruiser powered by twin Nanni 200 HP engines with low hours. Large inventory includes Raymarine C80 chartplotter with radar, bow thruster and much more. A well-presented and capable shaft-driven cruiser with great accommodation. Beautifully maintained and she is a must-see and ready to go for the summer boating season.

* Excellent order throughout * VAT Paid* British registered

Beneteau Antares 9.80 with Flybridge - a nice example of this hugely popular cruiser from Beneteau. Equipped with twin diesel engines and a truly comprehensive specification, she is currently on a short summer cruise in the Greek Ionian and due for lift out mid August. She could also easily be transported back to Northern Europe.



Accommodation

SLEEPS FOUR IN ONE DOUBLE AND TWO SINGLES BERTHS

SALOON

U-shaped dinette in blue upholstery to port with table.

Storage lockers to starboard

Cherry wood joinery.

Headroom 1.90m (6' 3") throughout.

BERTHS

The large forecabin has a double "island" berth with polished wood cabinetry. A Webasto diesel heating system warms the cabins.

Forward cabin with double berth, hanging locker, storage unit and shelving.

Second cabin to starboard with twin bunks and bedside locker.

HEADS

Heads compartment with Jabsco w.c, handbasin, shower, mirror and locker.

GALLEY

Galley area forward of the dinette to port with:

Eno two burner gas hob, oven and grill.

Front opening 80L fridge.

Stainless steel sink.

Domestic

- Webasto diesel heating system
 - Hand basin
 - Marine WC (with holding tank)
 - Hot/cold showerhead
 - Stereo radio/CD player with inside and outside speakers
 - Stainless steel sink with hot/cold pressurized water supply
 - Two burner gas stove with oven and grill
 - 220V microwave
 - Fridge
-
- Flat screen TV

Mechanical

CONSTRUCTION

BENETEAU ANTARES 9.80 BUILT IN 2004

- Hull Material: Fiberglass
- Keel: Displacement
- Flybridge motor cruiser built by Chantiers Beneteau France
- White GRP hull with white deck and superstructure
- Teak cockpit and flybridge steps
- Bow thruster
- Deep V-hull
- Twin rudders
- Sliding cockpit system to enlarge the cockpit

DIMENSIONS

- L.O.A: 9.95M (32' 10")
- L.W.L: 9.56M (31' 3")
- BEAM: 3.42M (11' 0")
- DRAFT: 0.85M (2' 79")
- AIR DRAFT: 4.30M (14' 1")

MECHANICAL

- 2x Nanni 4.390 TDI 200hp turbo diesel engines shaft drives
- Horsepower: 200hp each
- Hours on each engine approximately 1600
- Rope cutters on each shaft
- Lewmar bow thruster
- Hydraulic trim tabs
- Engine and service batteries charged by engine



DECK

- Patio doors leading to the cockpit
- Steps leading to the Flybridge

CANVAS

- Bimini on Fly bridge

TENDER

- New 2022 Honwave dinghy

MISCELLANEOUS

- Brand new Pioneer DAB radio fitted recently

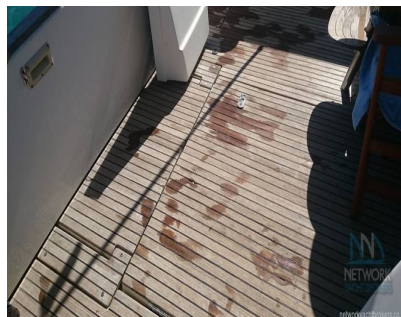
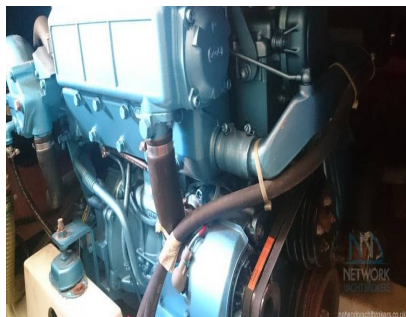
TITLE DOCUMENTS AND TAX

Listed below are the documents/or copies which we have seen on listing this yacht.

- One owner from new
- British Part one registration
- Builders certificate
- RCD Certificate of conformity
- Original VAT invoice to current owner (UK)
- Confirmation the vessel was in the EU at Brexit 31/12/2020 (EU VAT Paid)
- Bill of Sale from dealer to current owner

KNOWN DEFECTS

- None



Contact

**Greek Yacht Sales Ltd. t/a Network Yacht Brokers
Lefkas**

NYB LEFKAS OFFICE

Address:

Network Yacht Brokers Lefkas Cleopatra Marina Preveza 48100 Ionian Islands Greece

***Telephone:* UK+ 44 203 051 0525 / Mob.+306945347870**

***Email:* info@nyblefkas.com**



NETWORK

BENETEAU BENETEAU

www.networkyachtbrokers.com

