

Bavaria 38 Ocean



Year: 1998
Location: Lefkas, Greece
LOA: 37' 7" (11.46m)
Beam: 13' 1" (3.99m)
Draft: 5' 1" (1.55m)

Remarks:

The Bavaria 38 Ocean is a classic sailboat. She offers the spacious accommodation and a handful of these quality centre console boats. Lots of upgrades and great condition

**Another boat sold by
Network Yacht Brokers**

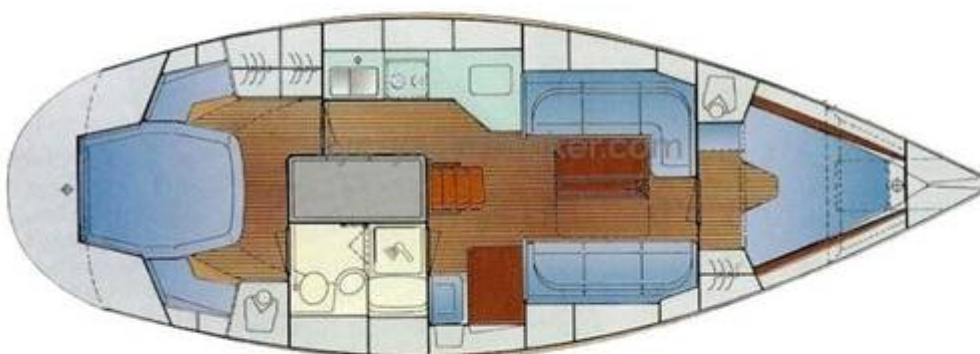
19,950

Tax Paid

UK+ 44 203 051 0525 / Mob.+306945347870

nyachtbrokers.com | over 700 boats listed

REF: 22232



Bavaria 38 Ocean Centre Cockpit

Mechanical and Rigging

CONSTRUCTION

Type : Sail
Builder / Designer: Bavaria
Make / Model: Bavaria 38 Ocean
Year Built: 1998
Year Launched: 1998
Designer: J&J Designs
Where Built: Germany
Construction Materials: GRP
Keel / Hull Form: Fin Keel
Steering Type: Wheel
Helm Position(s): Center
Deck Materials: GRP / Teak
Superstructure Materials: GRP
Hull Colour: White
Last Survey details: 2017

DIMENSIONS

LOA- 11.73m
LWL- 9.93m
Beam- 3.99m
Draft- 1.55m Shoal draft version
Displacement- 7500Kg
Ballast- 2900Kg

ENGINES/MECHANICAL

Manufacturer / Model- Volvo Penta MD 22
Year of Manufacture- 1998
HP (Each)- 59 hp
Hours 2000 (Approx) meter not working
Cooling - Sea water /fresh water
Drive Type- Sail Drive (Main Seal changed 2018)
Fuel Type- Diesel
Propeller Type- Folding 2 blade Aluminium (original as spare)
Prop was serviced 2019

TANKAGE

Fuel- 220 L
Water - 350 L (2 x 175L)

ELECTRICAL & BATTERIES

Domestic Batt. (2) Amps: 175 Ah each (2018)
Engine Starter Batt (1) Age: 2019
Charging System - Main engine alternator
2 x 100w solar panels and gantry - fitted 2018
2.2kwh sin wave inverter installed 2018
Shore Power
Shore Power cable

SPARS / RIGGING

Type of Rig- Sloop
Spars - Selden / Aluminium
Standing Rigging -10mm stainless Renewed 2018
Running rigging renewed 2018
Mainsail Reefing - 3 Reefs to cockpit Slab
Stack-pack / Lazy Jacks
Furling Headsail- furlex 300 S (Furlex serviced 2018)
Spinnaker Pole

SAILS

Main Sail Owen Sails- Excellent Condition (2011)
Genoa Owen Sails- Excellent Condition (2011)
Genoa new UV strip 2018
Storm Sail Bruce Banks

Inventory

NAVIGATION

Chart Plotter- Raymarine Aximo 9" at helm
GPS- Raymarine
Radar- Raytheon
Autopilot- Autohelm St 600
VHF Radio- ICOM ICM421
Handheld Raymarine (New)
Echo Sounder- Autohelm
Log / Speed- Autohelm
Wind Instrument- Autohelm
Compass- Suunto
Barometer- FCC
Clock- FCC

DECK

Decking Teak very good
Anchor Locker
Anchors- Rocna 25 kgs
Anchor Chain / Warp- 90m 8mm Chain
Anchor Windlass- Lewmar (NEW) New controller and remote
Winches- Harken throughout (Serviced 2019)
Pushpit / Pulpit
Boarding Ladder
Cockpit shower hot and cold
Cockpit Table folding wood
Cockpit Lockers
Wired and radio remote for anchor windlass

TENDER

Takacat 2.m Hyperlon dingy NEW 2018
Torqueedo electric outboard

SAFETY

Lifebuoys
Life Jackets- 4
Gas Detector

Flares (new 2019)
Radar Reflector- Echomax
Jackstays
Fire Extinguishers - #4
Fire Blanket
Bilge Pump(s) Manual
Bilge Pump(s) Electric

General note on safety equipment: Any safety equipment such as liferafts, fire extinguishers and flares etc. are usually personal to the current owner(s) and if being left on-board as part of the sale of a used vessel may require routine servicing, replacement by the new owner and not to be used in any negotiations on price.

Accommodation

2 Cabins plus spacious saloon and substantial galley down port side walkthrough
Large aft master cabin with central 'Island' Double bed. Ample hanging and shelf storage.
Forepeak with hanging and shelf lockers.

Saloon seating for 8 people with a separate chart table.
One head with separate shower area; entry from master cabin and saloon.
Linear galley with 2 sinks, a 2 burner cooker with Oven. Large fridge and ample worktop and cupboards. LPG Electric solenoid operated from the galley. Hot and Cold pressurised water system; Calorifier (Engine & Shore power) with thermostatic mixer valve.

INTERIOR / DOMESTIC

No. of Berths- doubles/singles- 2 double cabins + 2 single in saloon
No. of Cabins- 2
Headroom- Standing throughout 1.9M
Flooring- Teak & Holly
Hanging Locker(s)- 4
Heating- Eberspacher
Number of Heads- 1
Toilet Type- Jabsco Manual Pump
Shower
Hob
Oven
Galley Sink
Refrigerator
Water System - Pressurised
Hot water - immersion/ calorifier
Stereo

CANVAS

Fixed windscreen
sprayhood there but needs replacing
Bimini -good
Sail cover - Staypack

MISCELLANEOUS

Outboard - Make- Honda
Age- Unknown
Warps - lots

Fenders - 8 plus two balls

Remarks :

The **Bavaria 38 Ocean** is the much sought-after centre cockpit offering from Bavaria. She offers the spacious accommodation that you associate with a centre cockpit. Bavaria only made a handful of these quality centre cockpit cruisers in the Scandinavian style, for a fraction of the investment. Therefore they represent superb value for money. Impressively well presented first to view will buy her. We sold her to the current owners and they have added many upgrades and maintenance that was required.

HIGHLIGHTS:

- * Teak Decks renewed 2014 12mm
- * **Rigging (10mm) renewed 2018**
- * Volvo Penta MD22 (59HP) serviced June 2019
- * New Raymarine plotter
- * NEW Hyperlon tender and electric outboard.
- * Eberspacher Diesel heating
- * Fully Battened Main/ Lazy Jacks
- * Draft- 1.55m Shoal draft version
- * Immaculate condition throughout
- * VAT paid
- * British Part one Registered

First to view will buy

Contact: Network Yacht Brokers Lefkas Cleopatra Marina (Dock side) Aktio-Preveza Ionian Islands, Greece.

Tel: UK+ 44 203 051 0525 / Mob.+306945347870

Email: info@nyblefkas.com