

Vancouver Tayana 42

YEAR 1979 | €69,000 | NYB LEFKAS OFFICE



Summary

Manufacturer: Vancouver Tayana 42

Price: €69,000

Location: NYB Lefkas OFFICE

Year: 1979

ID no.: 22178

DIMENSIONS

- **LOA:** 41' 9" (12.73m)
- **Beam:** 12' 6" (3.81m)
- **Draft:** 5' 10" (1.78m)
- **Keel:** Fin keel

ACCOMMODATION

- **Berths:** 5
- **Cabins:** 2
- **Heads:** 1
- **Showers:** 1

PERFORMANCE

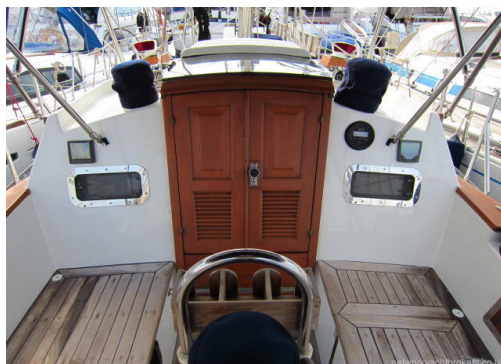
- **Top Speed:**
- **Cruising Speed:**

TANKAGE

- **Fuel:** Diesel
- **Fuel Tank Size:** 130 Gallons
- **Water Tank Size:** 760 Litres

MACHINERY

- **Engine Make:** Yanmar 4JH3E
- **Horsepower:** 55
- **Drive Type:** Shaft drive



Vancouver Tayana 42

Broker Remarks

Tayana Vancouver 42, a well-respected blue-water cruising sailboat designed by Robert Harris and built by Ta-Yang in Taiwan. The interior is beautifully finished in teak and spruce, including the interior of all lockers. There is abundant storage throughout, with numerous lockers and drawers. There are numerous opening ports, hatches, and dorades to provide excellent ventilation. Yacht has to be seen to appreciate. She is kept in meticulous condition by her current owners (19 years). Yacht is current ashore under full cover and ready to go sailing.



Accommodation

Accommodation

Roomy main saloon with Ultraleather coverings
Large table to seat 7-8
Luxe fireplace
Eberspacher heater
Weems and Plath clock and barometer
Three burner CSI gas stove with oven
Two deep stainless sinks
Large refrigerator
Separate deep freeze
Microwave oven
Cutlery, crockery, saucepans, pressure cooker etc
Wet locker
Two hanging cupboards
Double cabin forward
2 single berths in main cabin plus a pilot berth
Large single quarterberth aft
All berths longer than 6ft 6in
1 head Raritan
Sink
Shower with separate holding tank
Hot water tank heated by engine/shore power
Equipment
Electricity 240 / 110 / 12volt with appropriate circuit breakers
Shore power cables and fittings for both 240 and 110 volt connections
2KVA 220/110V transformer
Gel starting battery; 210AH gel house bank
3 Solar panels
2KVA Prosine inverter
Comprehensive energy monitoring system
Dodger and Bimini
Passerelle
Boarding ladder,swimming ladder,boarding step
Deck shower, hot and cold
Anchor washdown
Anchors, Bugel 60lbs, Fortress 50lbs, plus 3 others
Simpson Lawrence Horizon 1500 windlass
18ft parachute anchor and a drogue
9ft Avon Dingy
Suzuki DT6 outboard
Force 10 BBQ
Shadetree awnings for use on anchor
Side panels to protect cockpit in heavy weather
Side panel and back panel to shade from sun
Fly screens
Windscoop
Bilge pumps (4000 gph, 2000 gph,500 gph plus 1 manual)

Mechanical and Rigging

CONSTRUCTION:

GRP - Solid hull and cored deck
Cast iron ballast encapsulated in keel cavity
Keel stepped mast
Skeg mounted rudder
Hull treated West System epoxy
Deck and topsides - painted with Awlgrip

ENGINE:

Make / model: Yanmar 4JH3E
Horse power :55HP
Fuel :Diesel
Hours-3700
19" Brunton Autoprop
18" fixed blade propeller

ELECTRICAL:

Electricity 240 / 110 / 12volt with appropriate circuit breakers
Shore power cables and fittings for both 240 and 110 volt connections
2KVA 220/110V transformer
Gel starting battery; 210AH gel house bank
3 Solar panels
2KVA Prosine inverter
Comprehensive energy monitoring system
Bilge pumps (4000 gph, 2000 gph, 500 gph plus 1 manual)

SAILS & RIGGING

Cutter rigged
Mainsail with Dutchman slab reefing
Jib and staysail both Profurl rollerfurling
Genoa
Storm trysail
Winches 52x3; 27x2; 25x1 in cockpit
8 rope clutches in cockpit
Whisker pole on mast slide

NAVIGATION:

Ritchie Globe Master Compass
Autohelm hand held compass



CANVAS

Dodger and Bimini

Passerelle

Full Winter cover

Shadetree awnings for use on anchor

Side panels to protect cockpit in heavy weather

Side panel and back panel to shade from sun

Boarding ladder, swimming ladder, boarding step

Deck shower, hot and cold

Anchor washdown

Anchors, Bugel 60lbs, Fortress 50lbs, plus 3 others

Simpson Lawrence Horizon 1500 windlass

18ft parachute anchor and a drogue

Force 10 BBQ

TENDER:

9ft Avon Dingy

Suzuki DT6 outboard

MISC:

Fly screens

Windscoop

Safety Equipment

Life Sling

Throw rope

Jack lines

2 Type 1 life jackets

4 Suspenders 38 AH automatic inflatable life vests

ACR EPIRB (requires service)

Six man MD-2 Switlik liferaft (requires service)

Pilot 2 channel gas alarm³

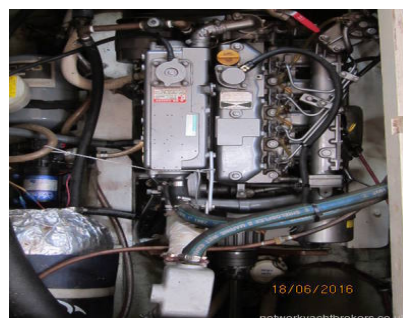
Fire Extinguishers

Fire blanket

First Alert Carbon monoxide alarm

11 sq meter Davis radar reflector

High water bilge alarm



Contact

**Greek Yacht Sales Ltd. t/a Network Yacht Brokers
Lefkas**

NYB LEFKAS OFFICE

Address:

Network Yacht Brokers Lefkas Cleopatra Marina Preveza 48100 Ionian Islands Greece

***Telephone:* UK+ 44 203 051 0525 / Mob.+306945347870**

***Email:* info@nyblefkas.com**

