

Bavaria Yachts Bavaria

YEAR 2005 | £45,000 | NYB LEFKAS OFFICE



Summary

Manufacturer: Bavaria Yachts Bavaria

Price: £45,000

Location: NYB Lefkas OFFICE

Year: 2005

ID no.: 22138

DIMENSIONS

- **LOA:** 40' 4" (12.30m)
- **Beam:** 12' 8" (3.87m)
- **Draft:** 6' 0" (1.83m)
- **Keel:** Fin keel

ACCOMMODATION

- **Berths:** 6
- **Cabins:** 3
- **Heads:** 1
- **Showers:** 1

PERFORMANCE

- **Top Speed:**
- **Cruising Speed:**

TANKAGE

- **Fuel:** Diesel
- **Fuel Tank Size:** 150 Litres
- **Water Tank Size:** 300 Litres

MACHINERY

- **Engine Make:** Volvo MD 2030
- **Horsepower:** 29
- **Drive Type:** Saildrive



Bavaria Yachts Bavaria

Broker Remarks

Bavaria 38 Cruiser -2005 A modern family yacht from the Bavaria stable, Germany's largest yacht builder & producer. At around 40' she delivers a lot. At 40'in length she gives full headroom below whilst maintaining a reasonably low coach roof and deck profile. The bow sections have kevlar reinforcement laid in to the GRP.

A good example of these popular 40ft cruising yachts with the 3 cabin layout. She has been owned privately (never chartered) from new by retired marine engineer who kept her pristine. British registered and VAT paid. Paper work in order and ready for a quick sale. **Priced reduced to encourage quick Sale-excellent Value**

The Bavaria 38 shows where comfort and sportsmanship meet. On the one hand spacious enough to provide comfortable room and clever stowage solutions, on the other hand not too big to be handy and quick, the Bavaria 38 keeps the golden mean. In comparison to her predecessor, the Bavaria 37, the Bavaria 38 features enlarged sails and thus becomes noticeably sportier to sail. Best sailing features and high quality workmanship at a more than favorable price ? yet another time Bavaria demonstrates to have the right touch for reasonable shipbuilding.



Accommodation

3 Cabins with 6 berths plus 2 berths in the saloon.

Luxury saloon with wrap around settee to dining table and island seat.

Upholstery is a rich "Helsinki Blue" in saloon and plain blue in cabins.

sideboards with stowage space and lockers. Chart table with stowage for charts and navigation equipment.

Chart table seat with storage for tools. 6 opening hatches.

Linear Galley with Gimballed 2 burner cooker and oven.

Insulated refrigerator, Twin stainless steel sinks, ample storage for food and utensils.

Marine heads with marine WC, holding tank and shower.

Hot & Cold water Engine or 240V

Mechanical and Rigging

CONSTRUCTION

Hull Material: GRP

Keel type: Fin



ENGINE

Engine Brand: Volvo MD 2030

Engine Type: Inboard

Engine/Fuel Type: Diesel

Engine Hours: Approx 2560

Drive Type: Sail drive

Engine Power: 29 HP



ELECTIRCAL

1 x Engine battery 55 Ah,

2 x domestic battery 140 Ah

2 solar panels mounted on stainless steel gantry

Voltmeter

Shore supply 240 V

Battery charger

240 V-socket at switch board, galley and Head

12 V-socket at switch board



NAVIGATION

Compass

Raymarine 54E VHF DSC

Wind Raymarine ST60

GPS Raymarine 300

Autopilot Raymarine Smart pilot (6001 +display)



TANKAGE

Fuel Capacity: 150 Litres

Water Capacity: 300 Litres (2*150L)

Holding Tank:40 Litres

Hot water from engine or 240V shorepower

DECK

GRP Side deck and coach roof

Teak on seat thwarts and cockpit floor

Side gates

Steering pedestal with Instruments console

On board generator 240V 2000W

The yacht is being sold with a full inventory and spares.

TENDER

Dinghy Neprane 2.3 Dinghy (2012)

Outboard Mercury 2.5hp recent service

CANVAS

Bimini

Sprayhood -needs some repair

SAFETY

Liferaft (Recent service)

Lifejackets & Harnesses

webbing jackstays

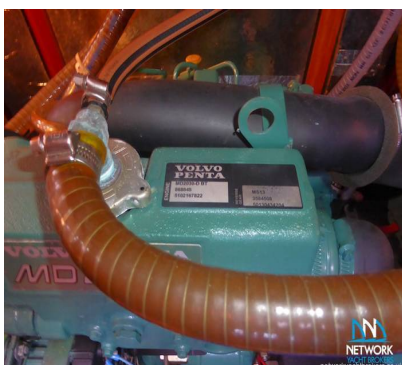
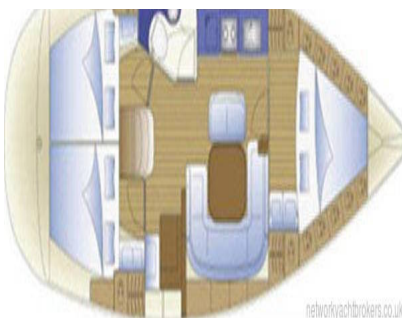
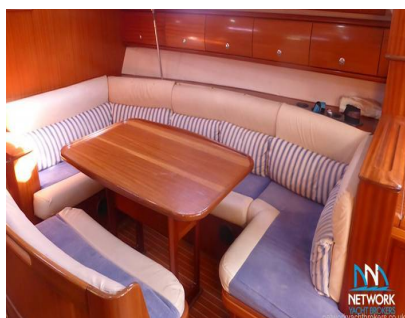
Cockpit anchor points (3)

Horseshoe Life buoy

Flares

Fire Blanket

Fire Extinguishers



Contact

**Greek Yacht Sales Ltd. t/a Network Yacht Brokers
Lefkas**

NYB LEFKAS OFFICE

Address:

Network Yacht Brokers Lefkas Cleopatra Marina Preveza 48100 Ionian Islands Greece

***Telephone:* UK+ 44 203 051 0525 / Mob.+306945347870**

***Email:* info@nyblefkas.com**

