

Hallberg Rassy Hallberg



YEAR 1998 | £234,950 | VAT PAID | NYB LEFKAS OFFICE



Summary

Manufacturer: Hallberg Rassy Hallberg

Price: £234,950

Location: Nyblefkas

Year: 1998

ID no.: 22131

DIMENSIONS

- **LOA:** 48' 6" (14.78m)
- **Beam:** 14' 3" (4.35m)
- **Draft:** 6' 2" (1.88m)
- **Keel:** Fin keel

ACCOMMODATION

- **Berths:** 6
- **Cabins:** 3
- **Heads:** 2
- **Showers:** 2

PERFORMANCE

- **Top Speed:**
- **Cruising Speed:**

TANKAGE

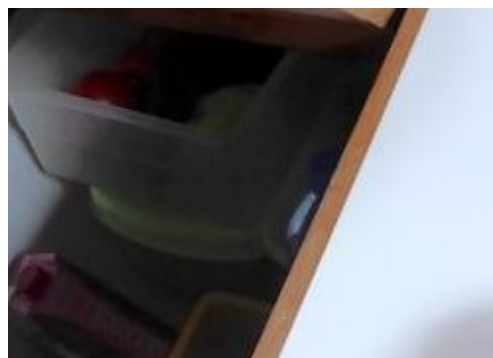
- **Fuel:** Diesel
- **Fuel Tank Size:** 615 Litres
- **Water Tank Size:** 905 Litres

MACHINERY

- **Engine Make:** Volvo Penta TMD31
- **Horsepower:** 100
- **Drive Type:** Shaft drive

OTHERS

- **Aircon:**
- **Heating:**



Hallberg Rassy Hallberg

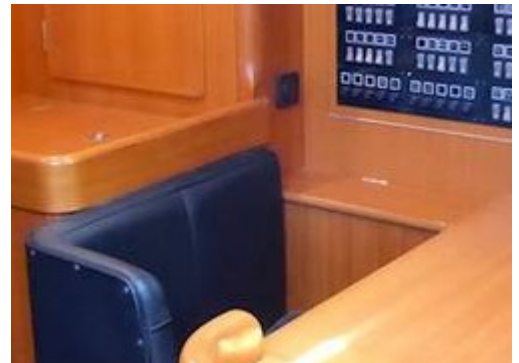
Broker Remarks

This Frers designed **Hallberg-Rassy 46** is a substantial offshore cruiser built with a high level of comfort for blue water sailing or extended living aboard.

With a proper sea going galley and very substantial en suite aft cabin this vessel will take you around the world or cruise home waters in serious comfort.

Her sea kindly hull is easily handled by a crew of two and with a good turn of speed she is a pleasure to sail.

Fitted with water maker, generator, twin heating systems, washing machine, electric winches, bow thruster, new main sail and a full kit of electronics she is ready to go and looking for a new owner with a sense of adventure.



Accommodation

Accommodation

First class workmanship in selected mahogany, hand rubbed and treated to a silk smooth finish. The cabin sole is varnished teak with holly stripes. The ceiling is lined with panels. Mahogany inner frames for skylights.

FORWARD CABIN - Traditional forward cabin with 'V' berth with infill to form a double. lockers above and storage below berth. Opening deck hatch, hanging locker and reading lamps.

BUNK CABIN - Situated to port opposite the forward heads. Two single bunks with hanging locker and vanity unit. Port lights, reading lamps and mirror.

MAIN HEADS COMPARTMENT - White laminate interior for easy cleaning. Separate shower with curtain and shower sump with electric pump out. Opening window in the shower. Porcelain wash-basin with hot and cold running water via mixer tap. Marine toilet with manual flush. Plenty of storage for toiletries etc.. Mirror and light.

MAIN SALOON - 'L' shaped settee to port, large central dropleaf table with internal bottle storage. Straight settee to starboard. Lockers and shelves outboard and stowage below starboard settee and behind both seatbacks.

GALLEY - 'U' shaped galley giving great security when at sea. Double stainless steel sinks with pressurised H & C water system via mixer tap. Additional manual fresh water system with foot pump. Insulated coolbox with sea water cooled 24v compressor. Separate top loading freezer compartment behind navigator's seat. Plenty of storage for provision and utensils in drawers and lockers, separate lockers for crockery and glassware, plus stowage for pots and pans etc. Opening port light for extra light and ventilation. Gimballed cooker with FORCE 10 2 burner gas cooker with oven and grill.

CHART TABLE - Large chart table measuring 108cm x 73cm with internal chart storage, drawers, lockers and shelf storage. Curved navigators seat. Ships electrical distribution panel with information dials and instrumentation. Behind the navigators seat is the freezer compartment a cupboard and hanging locker.

AFT CABIN - Large owners cabin with en-suite heads. Double berth to starboard and to port seat. Large full standing hanging locker, lockers, draws and shelves for general storage. Large mirror, reading lamps, 4 windows (3 opening). Headroom 1.92m.

AFT HEADS COMPARTMENT - White laminate interior for easy cleaning. Separate shower with curtain and sump with electric pump out. Sea toilet with manual pump. Porcelain wash basin with H & C pressurised water system via mixer tap. Plenty of storage for toiletries and bathroom stores. Opening portlight in the shower. Mirror and light.

Mechanical and Rigging

Measurements

LOA - 46 ft 3 in

Beam - 14 ft 3 in

LWL - 39 ft 0 in

Minimum Draft - 6 ft 2 in

Displacement - 16500 kgs

Ballast - 6600 kgs

Headroom - 6 ft 2 in

Fresh Water Tanks: Stainless steel (905 Litres)

Fuel Tanks: Stainless steel (615 Litres)

Engine hours - 2350 Approx.

Construction / General

- Builder: Hallberg-Rassy Varvs AB
- Designer: German Frers
- Flag of Registry: United Kingdom



CONSTRUCTION

Hull and deck are GRP, built under supervision of Lloyd's Register of Shipping.

The GRP hull is insulated above the water line. Deck is GRP sandwich construction, 35mm for strength and insulation. Hull and deck are joined by overlapping GRP laminate. The bulwark is formed in the deck and hull mouldings and fitted with a solid Teak capping. The lead keel is attached with stainless steel bolts. The mast is stepped on a base on the cabin top directly over a reinforced bulk head. Cockpit protected by permanent windscreens in tempered glass in light alloy frames. The middle pane opens. Handrails, companionway, hatch guides, sole and seats in cockpit are all in solid Bangkok teak. The cabin is done in selected mahogany, hand-rubbed and treated to a silk smooth finish.

ELECTRICAL

Fischer Panda generator 4 kVa

Water maker Dessalator D60 50 lph

2 x air heaters Webasto Airtop 32

4 x general service batteries (~3 years old)

2 x engine start batteries

1 x 24 volt 50 Amp battery charger

1 x 12 volt battery charger

1 x 1000 watt inverter

shore power lead and connections

2 x electric bilge pumps

1 x anchor windless Lofrans

RIG

Selden Furlex genoa furling

Navtex hydraulic back stay

Navtex hydraulic boom vang

Selden spinnaker pole

2 x Lewmar 64 electric winches

2 x Lewmar 44 electric winches

1 x Lewmar 12 CST manual winch

4 x manual winches on mast

SAILS

Elvstrom fully battened main new 2015

Genoa

Stay sail

MPS with sock

Tri-radial spinnaker

GENERAL

1 x 65 lbs CQR anchor
60m galvanised chain
Fenders and warps
Passerelle
Viking 6 man liferaft
EPIRB
Zodiac 2.8 m dingy new 2014
3 hp outboard engine
Deck shower H&C
Radar reflector
Teak binocular rack
Binoculars 7 x 50
Cockpit hood
Bimini
Extractor fan over cooker
Manual bilge pump



Contact

**GREEK YACHT SALES LTD. T/A NETWORK YACHT
BROKERS LEFKAS**

NYB LEFKAS OFFICE

Address:

Network Yacht Brokers Lefkas Cleopatra Marina Preveza 48100 Ionian Islands Greece

Telephone: UK+ 44 203 051 0525 / Mob.+306945347870

Email: info@nyblefkas.com

Disclaimer : Greek Yacht Sales Ltd. t/a Network Yacht Brokers Lefkas offers the details of this vessel for sale but cannot guarantee or warrant the accuracy of the information contained in the specification or warrant the condition of the vessel or equipment. A buyer should instruct his agents, or surveyors, to investigate such details as the buyer desires validated. This vessel is offered for sale subject to no prior sale, price change, or withdrawal without notice.

