

Sagitta Sparkman &

YEAR 1972 | £19,500 | DARTMOUTH OFFICE



Summary

Manufacturer: Sagitta Sparkman &

Price: £19,500

Location: Dartmouth OFFICE

Year: 1972

ID no.: 171400

DIMENSIONS

- **LOA:** 34' 6" (10.52m)
- **Beam:** 10' 0" (3.05m)
- **Draft:** 5' 3" (1.61m)
- **Keel:** Fin keel

ACCOMMODATION

- **Berths:** 6
- **Cabins:** 2
- **Heads:** 1
- **Showers:** 0

PERFORMANCE

- **Top Speed:**
- **Cruising Speed:**

TANKAGE

- **Fuel:** Diesel
- **Fuel Tank Size:** 79 Litres
- **Water Tank Size:** 121 Litres

MACHINERY

- **Engine Make:** Volvo
- **Horsepower:** 28
- **Drive Type:** Shaft drive



Sagitta Sparkman &

Broker Remarks

Sagitta 35 for sale. Built by Sagitta Boat Company of Svenborg, Denmark as a racer /cruiser in 1972. This is a beautiful well proportioned boat with a spacious cockpit. The Sagitta 35 is easy on the eye and offers a fabulous , solid sailing performance. A rare classic not often on the market in the UK so an opportunity not to be missed for those who lean toward traditional yachts of the 70's and 80's. Her standing rigging was replaced in 2016. JO JO II OF FINDHORN has been well cared for and has a very distinctive grey hull complimented by pale grey sprayhood and sail covers. The hull was epoxy treated in 2007 and she was given a new gel coat at that time. She is currently ashore at Noss on Dart Marina and available for viewing.



ACCOMMODATION

Sleeps 6 in 1 x double and 4 single berths

- **Wooden interior joinery**
- **Beige interior upholstery**
- **Curtains**

Galley:

- Gimballed, Plastimo Neptune 2000 2x burner gas cooker with oven and grill with crash bar
- Sink
- Cool box

Saloon:

- Convertible settees port and starboard
- Folding dining table
- Pilot berth
- Chart table

Forecabin:

- 'V' berth converting to double
- Stowage

CONSTRUCTION, MECHANICAL AND RIGGING

Built by Sagitta /Bianca Yachts, Denmark in 1972
to a design by Sparkman and Stephens

- GRP hull deck and superstructure
- Fin Keel
- Fin and Skeg rudder
- Osmosis treatment (2007)
- Tiller Steering
- Gross tonnage 8.26
- Anodes fitted
- Antifouled

Engine:

- Volvo Penta 2003
- 28 hp 3 cylinder diesel engine
- Sea water cooled
- Shaft drive
- 3 bladed propeller

Electrics:

- 12v system
- 3 x batteries (2010)
- Shore power
- Shore power cable

Water System:

- Pressurised hot and cold water system
- Water heated by calorifier

Tankage:

- Fuel capacity 79 litres in 1 x tank
- Fresh water capacity 121 litres in 1 x tank



Navigation Equipment:

- Cetrack Log/ speed/ depth
- NavmanWind speed and direction
- Pacific Plus windpilot
- Raymarine E120 GPS / Plotter
- Firdell Radar reflector
- Compact Sx25 VHF
- Plastimo compass

Anchoring and Mooring Equipment:

- 12 kg CQR anchor
- 30m chain
- 32 m warp
- 6.5 kg Kedge anchor
- 10 m Chain
- 32 m Warp
- 5 x fenders
- Mooring lines
- Cleats
- Boat hook

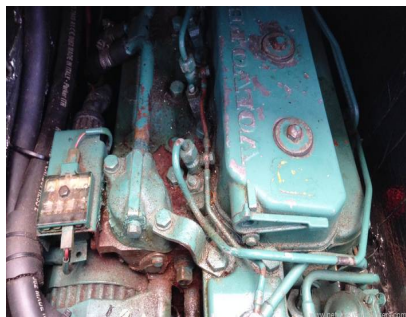
General Equipment:

- Clock
- Barometer
- Cutlery
- Crockery
- Utensils
- Radio/ CD Player
- Outboard bracket
- Mainsail cover
- Spray hood
- Tender
- Yamaha Malta 4hp outboard

Safety Equipment:

- Navigation lights
- 2 x manual bilge pumps
- Electric bilge pump
- Lifebuoy
- 3 x Life Jackets
- Gas detector

- Stainless steel pushpit
- Stainless steel pulpit
- 8 x person liferaft (overdue for service)
- 4 x safety harnesses, fastening points in cockpit
- Jackstays
- First aid kit



Contact

EQ Marine Ltd t/a Network Yacht Brokers Dartmouth

DARTMOUTH OFFICE

Address:

Network Yacht Brokers Dartmouth, Noss on Dart Marina Bridge Road Kingswear Dartmouth TQ6 0EA

***Telephone:* 01803 834864**

***Email:* sales@nybdartmouth.com**



NETWORK

| SAGITTA SPARKMAN &

| www.networkyachtbrokers.com

