

Trafalgar 70

YEAR 2001 | £132,950 | BRIGHTON OFFICE



Summary

Manufacturer: Trafalgar 70

Price: £132,950

Location: Brighton OFFICE

Year: 2001

ID no.: 16254

DIMENSIONS

- **LOA:** 70' 0" (21.34m)
- **Beam:** 15' 11" (4.85m)
- **Draft:** 4' 3" (1.3m)
- **Keel:** Displacement

ACCOMMODATION

- **Berths:** 6
- **Cabins:** 3
- **Heads:** 3
- **Showers:** 1

PERFORMANCE

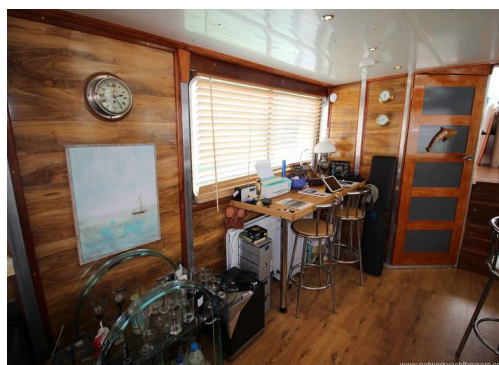
- **Top Speed:** 12
- **Cruising Speed:** 10

TANKAGE

- **Fuel:** Diesel
- **Fuel Tank Size:** 9000 Litres
- **Water Tank Size:** 1600 Litres

MACHINERY

- **Engine Make:** John Deere T6068
- **Horsepower:** 225
- **Drive Type:** Shaft drive



Trafalgar 70

Broker Remarks

This Trafalgar 70 was built in Holland by Euroship in 2001.

Her hull is made from 6mm steel plate. She has comfortable, well laid out accommodation which has been designed to maximise the space. There are two galleys and a spacious saloon, dining area and bridge. Her accommodation has two double cabins, a twin cabin and three heads, one of which benefits from a bath. With an upper deck and aft deck she is well set up for sunbathing and entertaining. 'Eclipse' has had an extensive refit which is 80% complete, some carpentry is still required to finish this fine vessel. Please note the vessel would require the addition of some ballast in order to undertake a long voyage.



Accommodation

Upper deck with spacious seating area

Aft deck with seating area and stairs to upper deck and double doors to the saloon

Bridge

Helm with full controls and seat

Seating area to port of the helm seat

Above Deck Saloon, Dining Area and Galley

Spacious and benefiting from large windows

Well fitted galley with wooden worktop, double stainless steel sink with mixer tap, oven, 4 ring hob, extractor, fridge

Switch panel located in the saloon

Venetian blinds

Curtains to double doors

Lower Galley

Storage cupboards, wooden worktops, stainless steel sink, fridge, microwave

Master Cabin with Ensuite

Double berth

Seats

Storage

Wall lights

Ensuite

Electric toilet

Bath

Double Cabin

Twin Cabin

Heads Compartment

Electric toilet

Shower

Heads Compartment

Electric toilet

Sink

Mechanical and Rigging

Engine year 2000
3 Blade bronze propeller
Stern thruster
Bow thruster

2002 Twin JOHN DEERE T6068 6-cylinder 225hp main propulsion engines. Twin-Disc reduction gear-boxes drive stainless steel shafts to conventional 3-blade propellers.

- Rated Speed (rpm) **2600rpm**
- Rated Fuel consumption **L/hr (gal/hr) 46.8 (12.4)**.
- 1500NM Range
- Cruising speed 8-10kts. Top speed 12kts.

Fuel Capacity - approx. 9000 litres in 5 fuel tanks
Water Capacity - approx. 1600 litres in 1 plastic tank
'Black / Grey' Capacity - approx. 2000 litres

Bow and Stern thrusters - serviced in 2017
Onan 17.5KvA Generator

Engines started once per month.



Deck

Fenders
Anchor
Warps and lines
Electric windlass
Radar arch

Navigation and Electronics

Raymarine C120 chartplotter - UK and
Ireland charts
Raymarine radar
Depth sounder
Autopilot
Compass
Simrad VHF
Self tracking satellite TV

Electrics

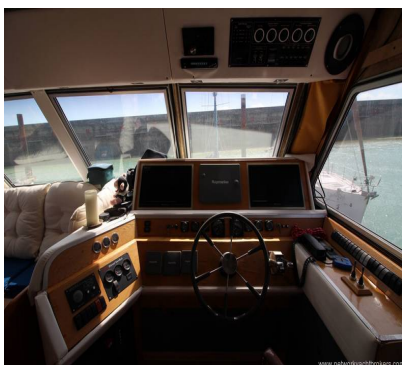
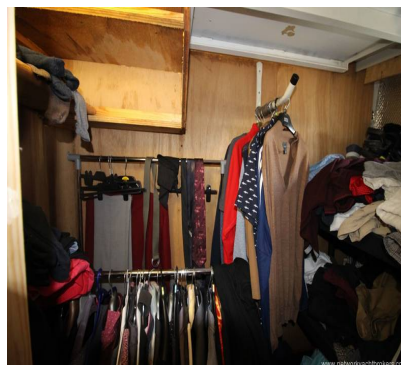
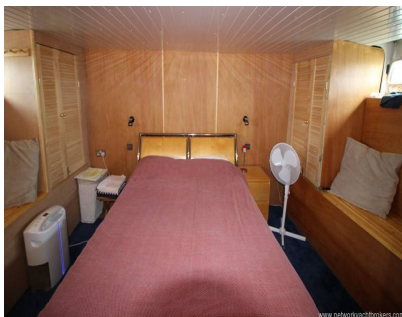
240v Shore power
Battery charger
Onan generator
'Eclipse' has recently been rewired

Systems

Water system - new plumbing throughout
Hot water system
Kabola diesel central heating system - new

Safety Equipment

Electric bilge pump
Life ring



Contact

**Blackrock Yachting Limited t/a Network Yacht
Brokers Brighton**

BRIGHTON OFFICE

Address:

Blackrock Yachting Ltd 1b East Lockside Brighton Marina Brighton East Sussex BN2 5HA

***Telephone:* 01273 697777**

***Email:* ray@bryachting.co.uk**

