

Moody Moody 42

YEAR 1977 | £35,000 | PLYMOUTH OFFICE



Summary

Manufacturer: Moody Moody 42

Price: £35,000

Location: Plymouth OFFICE

Year: 1977

ID no.: 1011203

DIMENSIONS

- **LOA:** 41' 6" (12.64m)
- **Beam:** 15' 9" (4.80m)
- **Draft:** 7' 5" (2.25m)
- **Keel:** Fin keel

ACCOMMODATION

- **Berths:** 8
- **Cabins:** 3
- **Heads:** 2
- **Showers:** 2

PERFORMANCE

- **Top Speed:** 8 Knots
- **Cruising Speed:** 6 Knots

TANKAGE

- **Fuel:** Diesel
- **Fuel Tank Size:** 409 Litres
- **Water Tank Size:** 160 Litres

MACHINERY

- **Engine Make:** Perkins 4-236M
- **Horsepower:** 72
- **Drive Type:** Shaft drive



Moody Moody 42

Broker Remarks

This Moody 42 ketch aft cockpit is a fantastic example, this yacht offers so much at a very affordable price. She has been in the same ownership since 1997 and has been extremely well maintained and upgraded by her current owners. (please read the spec carefully to see upgrades and maintenance)

The Moody 42 offers superb accommodation for up to 8 people, there is 3 separate cabins and a convertible saloon double berth. This is great for extended cruising for families or just a few friends to go along. There is a very spacious and light filled saloon with a generous galley and a spacious forward heads, the owners cabin also has the luxury of an ensuite heads. She is a very comfortable and powerful sea boat that will tackle everything put in front of her. There is a reasonable draft and she is predictable to handle at close quarters as well as in a seaway. The Moody 42 has been built by a quality UK builder in Marine Projects Plymouth, their range of Moody yachts were hugely successful and they are sought after boats still in today's market. The combination of the design team from Angus Primrose and manufacturers Marine projects the quality that has been delivered for a boat of this age is superb. For further details or to arrange a viewing then please contact our sales team.



Accommodation

Sleeps 8 in three cabins plus the saloon

Forepeak cabin with a double berth

Guest cabin with bunk single berths

Forward heads

Chart table

Galley

Large open plan saloon

Owners double aft cabin with en-suite

All interior joinery in solid teak

Teak & holly saloon flooring

Deck saloon windows

Forecabin:

double V berth with infill for either, 2 x singles
or large double berth

Lockers over & under berths

Dressing table with drawers & hanging
lockers

Opening deck hatch

Fitted carpet

Mirrored opening hatch to anchor locker

Port Guest Cabin:

2 x single bunk berths

stowage

large hanging locker

dressing table with drawers

Opening deck hatch

Fitted carpet

Forward Heads:

Lavac sea water toilet

Molded hand basin

Hot & cold pressurised water

Shower with fresh water

Mirror

Extractor fan

Teak grating

Ample stowage

Opening deck hatch

Chart Table:

To starboard is navigation area

Full instrumentation and
Various lockers & drawers

Galley positioned to port with step down from the saloon
Taylors stainless steel gimballed gas stove with 2 burner hob, hot plate, oven & grill (refurbished 2008)
Large front opening refrigerator
Stainless steel sink
Hot & cold pressurised water
Hand pumped salt water
Excellent work surface space
Good stowage with lockers and drawers
Handy mirror in front of sink allowing chef to monitor safety on after deck, and remain in conversation when entertaining.

Saloon:

Spacious saloon
Teak & holly flooring (large opening hatches to engine room & storage compartment!)
To port is a large C-shaped settee
C-shaped seating converts to a large double berth
Settee bench seating to starboard for 2
Dining area with saloon table (2 x stools stored below cabin sole for further seating)
Bookshelves
Drinks & glasses lockers
4 x fixed deck saloon windows
2 x opening deck saloon windows
Large sliding coachroof sliding sunroof

Aft Owners Cabin:

Access from the saloon
Hanging locker

Large mirror
Large double berth
Fitted carpet
Opening deck hatch

Mechanical and Rigging

Construction:

Built in 1977 by Marine Project Plymouth
Designed by Angus Primrose
White GRP hull, deck & superstructure
Aft cockpit version
Encapsulated fin keel
Skeg hung rudder
Wheel steering
Teak interior joinery
Interior teak & holly flooring
An abundance of natural light & large deck saloon windows

Mechanics:

Engine & gearbox removed & overhauled in 2000
Perkins 4-236M 72hp diesel engine
Borg Warner reduction gearbox (gearbox high pressure oil hoses replaced 2006)
Shaft driven (new shaft in 2003)
Wet to wet exhaust system (new April 2015)
Three blade fixed pitch propeller
Prop protector rope cutter

Electrics:

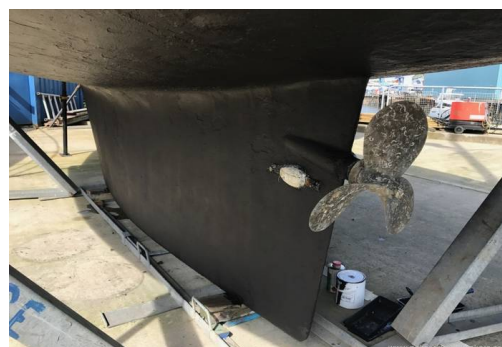
2 x engine start batteries 24v
2 x domestic batteries 24v
2 x instrument batteries 12v
NewMar Phase Three, three stage mains battery smart charger 12v system (new 2003)
Sterling power products 24v 20amp mains battery charger
Vtronix 12 amp switch mode voltage convertor
Charging from engine alternator
Sterling Power Products inverter (new 2003)
Comprehensive electrics switchboard
B&g voltmeter & ammeter positioned in the cockpit
Glomex TV antenna

Tankage:

Fresh water capacity 727 litres (160 gallons)
Fuel capacity 409 litres (90 gallons)
Fuel tank drained & cleaned 2006

Water System:

Hot & cold water
Hot water from calorifier & immersion heater (new 2013)



Autohelm ST40 tridata
Furuno Marine Radar 1715 (new Jan 2011)
Garmin Echo 200 (new March 2012)
Garmin GPS 65
Shipmate RS 8300 VHF radio (extra handset for the cockpit,
new VHF aerial Jan 2010)
Shipmate Loudspeaker
Silva mounted compass

In the cockpit;
Raymarine P70 autopilot with
Raymarine course computer replaced in June 2016
Autohelm ST40 wind speed & direction
Silva Star Nav repeater
Magnetic Plastimo steering compass

Ground tackle:

Simpson Lawrence Sealion electric anchor windlass, with
canvas cover
Stainless steel bow roller
Danforth anchor
Kedge anchor in lazarette
Chain

Deck gear:

Lewmar #46 self-tailing, two speed sheet winches
Lewmar #16 self-tailing, two speed sheet winches
Stainless steel davits
Port & starboard boarding gates
Stainless steel pulpit & pushpit
Stainless steel grab bars on the deck saloon roof & forward
coachroof
Aluminium stanchions, fairleads & mooring cleats
Port & starboard water filling caps
Fuel filler cap
Sony waterproof cockpit speakers

Safety Equipment:

All Safety equipment listed is included in the sale but the
vendor offers no warranties
The purchaser must service the safety equipment and ensure
that it is appropriate for his purposes
6 man BFA/XM offshore liferaft
Jon buoy
Echomax EM230 radar reflector
Anchor, foredeck, floodlight, tri colour & deck level navigation
lights on main mast
Aft cockpit floodlight on mizzen mast

Gas system overhauled in Jan 2010, gas checked & certified
2017

Equipment:

Avon 3.8 inflatable dinghy with pump (stowable for long passages)

Evinrude 2 stroke 5hp outboard engine

Canvas cockpit dodgers

Canvas wheel & pedestal cover

Passarelle/Mediterranean Boarding Ladder with Rope stanchions

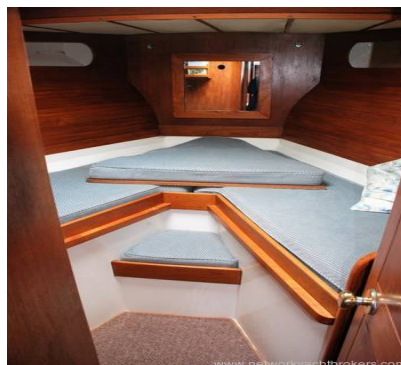
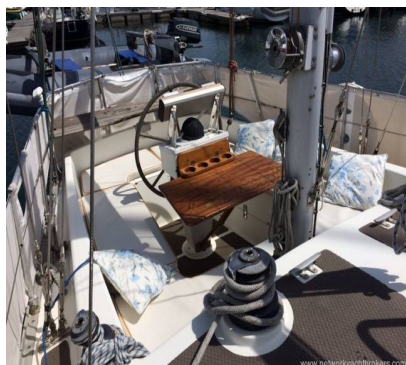
Various warps & fenders

Teak stern mounted boarding/storage box (original stern ladder stored ashore & available to refit)

Owners carefully drawn & informed where is it book & how to do it book (facilitates stowage plan in detail etc)

Clear washboard for wet days but allows light into the saloon

Hard standing yacht cradle x 4 acroprops



Contact

Network Yacht Brokers (Southwest) Ltd t/a Network Yacht Brokers Plymouth

PLYMOUTH OFFICE

Address:

Network Yacht Brokers (Plymouth), Mayflower International Marina, Ocean Quay, Plymouth. PL1 4LS

***Telephone:* 01752 605377**

***Email:* info@nybplymouth.com**

