

Bavaria Yachts Bavaria

YEAR 2002 | £35,000 | PLYMOUTH OFFICE



Summary

Manufacturer: Bavaria Yachts Bavaria

Price: £35,000

Location: Plymouth OFFICE

Year: 2002

ID no.: 1011201

DIMENSIONS

- **LOA:** 33' 10" (10.31m)
- **Beam:** 11' 0" (3.35m)
- **Draft:** 4' 10" (1.47m)
- **Keel:** Fin keel

ACCOMMODATION

- **Berths:** 6
- **Cabins:** 2
- **Heads:** 1
- **Showers:** 1

PERFORMANCE

- **Top Speed:** 6.5 Knots
- **Cruising Speed:** 5 Knots

TANKAGE

- **Fuel:** Diesel
- **Fuel Tank Size:** 90 Litres
- **Water Tank Size:** 150 Litres

MACHINERY

- **Engine Make:** Volvo Penta MD2020
- **Horsepower:** 18
- **Drive Type:** Saildrive



Bavaria Yachts Bavaria

Broker Remarks

Bavaria as a brand are a very well known and respected, the high level of manufacturing that they have developed throughout the years of production has made this brand what they are today, a leader in the production yacht range. This Bavaria 32 is an very nice example, she has been in the same ownership for many years and has been maintained professionally by the local boatyard in Penmarlam. The Bavaria 32 has superb accommodation, she has been designed to give two spacious double cabins, as well as two full-size single berths in the saloon. A generous galley and good size heads for a yacht of this size. There is a good sail inventory for this Bavaria 32, the blade genoa is in like new condition, the no one genoa is in excellent condition, and the mainsail is also in good order. The owners have mainly cruised the boat around the southwest coast and the occasional trip across the channel to north Brittany.



Accommodation

The Bavaria 32 Sleeps 6 guests in three cabins including the saloon
She has a double V berth in the forward cabin
Port & starboard single saloon berths
Forward facing chart table
L-shaped galley to port
Aft heads to starboard
There is a large double berth in the aft cabin
Fitted with soft blue cloth upholstery

Saloon:

Port & starboard single berths
Under berth storage
Above seating cupboards
Saloon table
Lewmar opening portlights & deck hatch

Galley:

The L-shaped galley is located to port
Two burner gas hob, oven & grill
Stainless steel sink
Insulated coolbox with a DC refrigeration unit

Chart Table:

There is a forward facing chart table
Full-size chart storage for charts
Chart storage
Instruments
Electric switch panel

Heads:

There is a separate heads compartment to starboard
Hand basin
Hot & cold pressurised water
Shower

Forward Cabin:

Has a large double V berth
Hanging lockers to port & starboard
Large under berth stowage
Open shelving to port & starboard
Opening Lewmar deck hatch

Aft Cabin:

Has a large double berth
Hanging locker
Rack of cupboards outboard
Opening cockpit portlight

Mechanical and Rigging

Construction:

Built by Bavaria Yachts Germany in 2002

Designed by J & J Designs

GRP hull deck & superstructure

Shallow draft cast iron fin keel

Spade rudder

Wheel steering

Transom boarding gate

Teak laid cockpit seating & cockpit floor

Sugar scoop stern with bathing platform

Mechanics:

Volvo Penta MD2020 18hp diesel engine

Saildrive transmission

Two blade fixed pitch propeller

Single lever morse control

Webasto diesel fired heating

Engine spares – Volvo drive belt, oil & impellers

Electrics:

2 x 12V large leisure batteries with isolator switch

12V, 60ah engine start battery with isolator switch

220V mains battery charger

Charging from engine alternator

220V shorepower ring main

Water System:

Hot & cold water

Hot water from calorifier & immersion heater

Pressurised water system

2 x in line water filters

Tankage:

Fresh water capacity 150 litres (33 gallons) in 1 plastic tank

Fuel capacity 90 litres (19.8 gallons) in 1 plastic tank

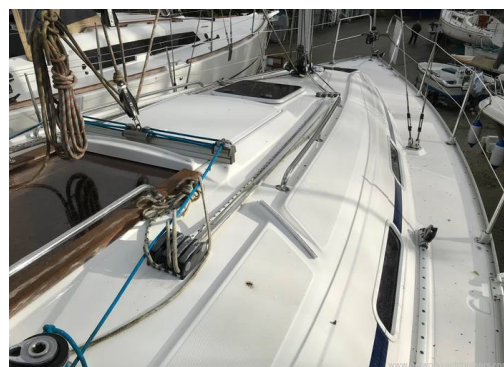
Holding tank

Sails:

Slab reefing mainsail

Blade roller furling jib

Roller furling genoa



Navigation Aids:

Helm Pedestal;
Raymarine ST60 tri data
Raymarine ST4000+ autopilot
Steering compass

Chart Table;
Raytheon RC320 Chartplotter with C-Map
chart card
Furuno Navtex NX300
Simrad RD68, DSC, VHF radio
Local admiralty paper charts

Ground Tackle:

CQR anchor
Chain & warp
Stainless steel bow roller
Stainless steel bow protector

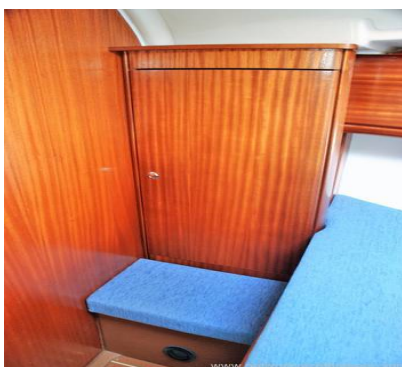
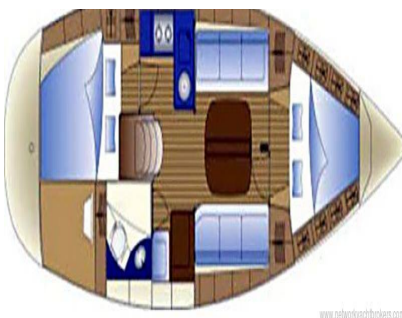
Deck gear:

2 x Harken #16 self-tailing halyard winches
2 x Harken #32 self-tailing sheet winches
8 x Rutgerson rope clutches
Rutgerson mainsheet traveller (positioned on the coachroof)
Adjustable Rutgerson genoa cars with tracks
Stainless steel stanchions, pulpit & pushpit
Mooring cleats, foreward, amidships & aft
Boarding ladder
Stern sugar scoop bathing platform

Safety Equipment:

All Safety equipment listed is included in the sale but the vendor offers no warranties
The purchaser must service the safety equipment and ensure that it is appropriate for his purposes
2 x Seago 150N auto lifejackets
2 x Crewsaver lifejackets
2 x Harness lines
Horseshoe lifebuoy & light
Jackstays
Electric bilge pump
Manual bilge pump
Emergency tiller
Fire extinguisher
First Aid Kit & manual
Fog horn
Anchoring bell

Canvas sprayhood with stainless steel frame
Canvas stackpack
Cockpit table
Extending boat hook
Moor fast boat hook
Various fenders & warps
Bosun's chair (wooden)
Seago bosun's chair
Flagstaff & ensign
Fender step
Ships flags
Cutlery, crockery and utensils
Ships clock & barometer
Deck brush



Contact

**Network Yacht Brokers (Southwest) Ltd t/a Network
Yacht Brokers Plymouth**

PLYMOUTH OFFICE

Address:

Network Yacht Brokers (Plymouth), Mayflower International Marina, Ocean Quay, Plymouth. PL1
4LS

***Telephone:* 01752 605377**

***Email:* info@nybplymouth.com**

