

Bruce Roberts Bruce Roberts Spray 38 Livaboard



YEAR 1990 | £00000 | VAT PAID | PLYMOUTH OFFICE

**Another boat sold by
Network Yacht Brokers**

Summary

Manufacturer: Bruce Roberts

Price: £00000

Location: Plymouth

Year: 1990

ID no.: 1011155

DIMENSIONS

- **LOA:** 42' 0" (12.80m)
- **Beam:** 13' 0" (3.96m)
- **Draft:** 5' 7" (1.7m)
- **Keel:**

ACCOMMODATION

- **Berths:** 6
- **Cabins:** 2
- **Heads:** 2
- **Shower:**

Another boat sold by
Network Yacht Brokers

• **Stowage:** 100 cu ft
• **Tank Size:** 0

MACHINERY

- **Engine Make:** Perkins 6354
- **Horsepower:** 120
- **Drive Type:** Shaft drive

OTHERS

- **Aircon:**
- **Heating:** Eberspacher



Bruce Roberts Bruce Roberts Spray 38 Livaboard

Broker Remarks

The Bruce Robert Spray 38 is an iconic cruising and livaboard vessel.

Many Sprays have circumnavigated or completed long distance voyages and a number of them have been featured in Bruce Roberts book "The Spray 38: A Cruising Boat". They are not only reliable and seaworthy but also the spacious and comfortable.

**Another boat sold by
Network Yacht Brokers**

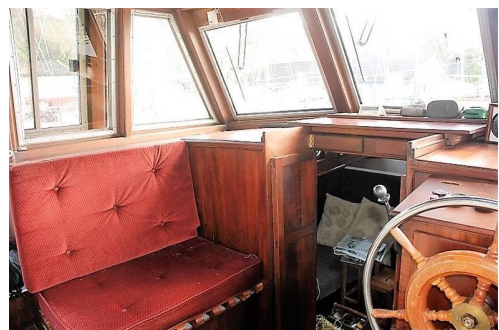
and enjoyed

Worcester, England by Roger
Diglis. Worcester. There are
the build available to view.

current owner has maintained her well and since her commissioning in 2005 has enjoyed many pleasant times on the River Tamar & Southwest coast.

She offers great value as a Bermudan rigged auxiliary Ketch, of conventional long keel and multi-chine hull form.

Under the working rig of genoa, mizzen sail and mainsail she would carry about 900 sq ft of canvas.



The sails were new in 2007 and were used very lightly for 5 seasons and have been laundered, bagged & stored since 2012. They are made by Saunders Sails and are of real quality.

The 6 cylinder Perkins diesel auxiliary engine and PRM hydraulically operated gearbox and deliver up to 120hp.

**Another boat sold by
Network Yacht Brokers**

Accommodation

Sleeps 6 in two cabins and the saloon

V berth in the forepeak cabin

Heads aft of the Forepeak cabin

Saloon with single berth to port

Aft facing bench seating to starboard

L-shaped galley to starboard

Isotherm refrigerator with freezer

Force 10 four burner hob & oven

Double sink, with hot & cold pressurised water

Chart table to port

Portside passageway to aft cabin with folding single berth

Aft cabin with a large double berth

En-suite heads

Workshop/workbench next to the engine room

Wheelhouse with helm position to starboard seating to port

Ample stowage throughout

Internally from forward

and a two berth

there is a

basin

A step up- leads to the enclosed wheelhouse with controls set to starboard, seating area to port and the engine is under the wheelhouse floor. A step down from aft end of the enclosed wheelhouse leads to the double cabin within the stern of the vessel, incorporating a second heads set to the starboard side.

**Another boat sold by
Network Yacht Brokers**

A passageway which incorporates a large single fold down berth, to the port side of the engine room leads back to the double cabin and the passageway on the starboard side provides a utility and workshop area. The engine compartment itself is accessed from both these passageways.

**Another boat sold by
Network Yacht Brokers**

Mechanical and Rigging

Construction:

Professionally built by Roger Apperley of Watercraft, Diglis, Worcester in 1990

Interior fit out completed professionally between 1990 & 2005, launched in 2005

Designed by Bruce Roberts

Built from steel construction

Multi chine

Teak laid decks

Teak capping rail

Wheel steering

Long keel with lead ballast (keel stripped and repainted in 2016)

Hull has been professionally spray painted

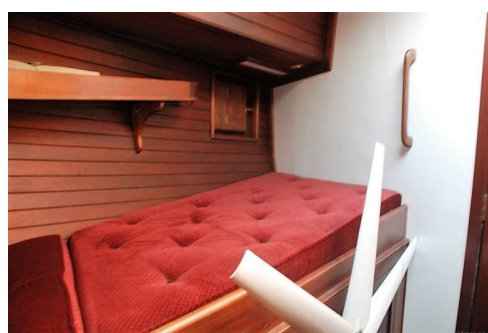
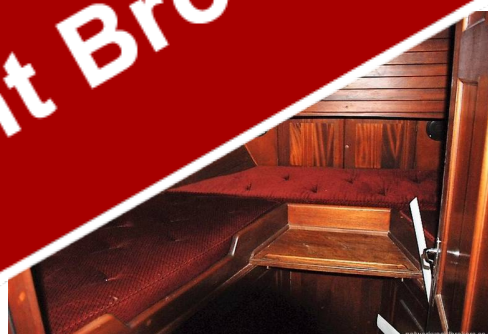
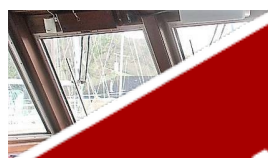
Mechanics:

Perkins 635 (2000)

2000

1

Another boat sold by
Network Yacht Brokers



...polypropylene fresh water tanks (volume unknown but sufficient for long term cruising)

Polypropylene fuel tank & single steel suction tank within the keel (volume unknown but sufficient for long term cruising)

Holding tank made of polypropylene

Water System:

Hot & cold pressurised water

Water system refitted with new hoses etc throughout in 2015

Water heated from gas fired water heater

Electrics:

12V heavy duty gel batteries x 4

Electronic devices Hawk 3 mains battery charger

Charging from engine alternator

EDMC alternator management system

Aero 6 gen wind generator

3 x solara SM225M solar panels

Sunsaver duo SR425 monitor

Morning star remote

240V shore power

Shore power

**Another boat sold by
Network Yacht Brokers**

in excellent condition

telescopic masts

Carbon rod kicker (new 2005)

Single spreader main & mizzen masts

Inner removable forestay

2 x Harken #16 two speed mast winches

Harken #32 two speed mast winch

Harken #8 single speed mizzen mast winch

Furlex roller furling gear

Sails:

All sails are in like new condition!!

Mainsail by Saunders Sails (new 2007)

Mizzen sail by Saunders Sails (new 2007)

Genoa by Saunders Sails (new 2007)

**Another boat sold by
Network Yacht Brokers**

Navigation Aids:

Garmin GPS Map 4008 chartplotter
Garmin Radar
Garmin GMI 10 (NMEA 2000 compatibility)
GWS 10 Wind speed
Vetus echosounder/depth
Vetus electronic log/speed
Vetus hydraulic autopilot AUTOP46
Vetus rudder position
Icom IC M601 DSC, VHF radio transceiver

Ground Tackle:

35 lbs CQR primary anchor
35 lbs CQR secondary anchor
Gypsies x 2
Both anchors have 50 meters of 12mm chain
15 meters of multibraid warp x 2
Lofrans electric anchor windlass (foot control)
on deck & control unit in the wheel house
Double aluminium bow rollers

Deck Gear:

Harken #46 self
winches
Lewmar
Stair

Manual bilge pump
Navigation Lights
Tricolour masthead light
Red night sailing lights internally
Gas alarm

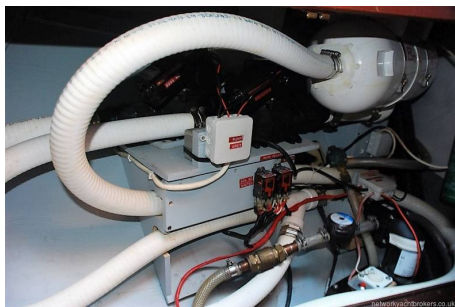
Equipment:

Wetline 2.60 inflatable hard bottomed
Evinrude outboard engine
Suzuki outboard engine
John Franklin telescope
under saloon seat
Canvas lazarette
mizzen
Fr

**Another boat sold by
Network Yacht Brokers**

Safety Equipment:

Electric bilge pump



**Another boat sold by
Network Yacht Brokers**



Contact

NETWORK YACHT BROKERS (SOUTHWEST) LTD
NETWORK YACHT BROKERS PLYMOUTH
PLYMOUTH OFFICE

Address:

Network Yacht Brokers (Plymouth), Mayflower International
4LS

Telephone: 01752 605377

Email: info@nybplymouth.com

Disclaimer : Network Yacht Brokers (Southwest) Ltd cannot guarantee the accuracy of the information provided by its agents, or surveyors, to investors. The company reserves the right to withdraw without notice.

Buyer should instruct his solicitor to conduct due diligence prior to purchase. The company cannot guarantee the accuracy of the information provided by its agents, or surveyors, to investors. The company reserves the right to withdraw without notice.

**Another boat sold by
Network Yacht Brokers**