

Oyster Lightwave 395

YEAR 1989 | £39,950 | CONWY OFFICE



Summary

Manufacturer: Oyster Lightwave 395

Price: £39,950

Location: Conwy OFFICE

Year: 1989

ID no.: 073909

DIMENSIONS

- **LOA:** 39' 4" (11.99m)
- **Beam:** 11' 9" (3.59m)
- **Draft:** 7' 9" (2.35m)
- **Keel:** Fin Keel

ACCOMMODATION

- **Berths:** 6
- **Cabins:** 3
- **Heads:** 1
- **Showers:** 0

PERFORMANCE

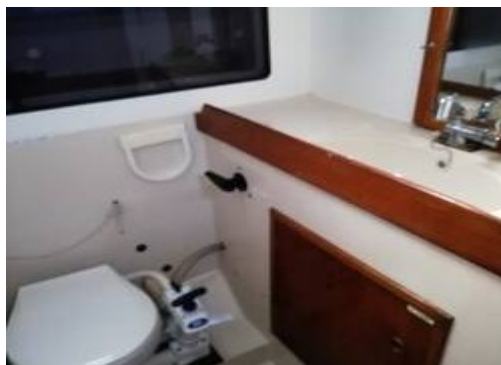
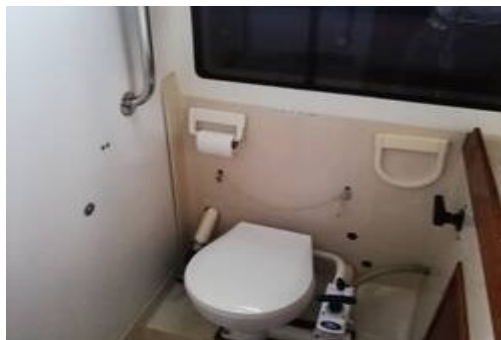
- **Top Speed:** 7
- **Cruising Speed:** 6

TANKAGE

- **Fuel:** Diesel
- **Fuel Tank Size:** 0
- **Water Tank Size:** 0

MACHINERY

- **Engine Make:** BETA 30 K33348
- **Horsepower:** 30
- **Drive Type:** Shaft drive



Oyster Lightwave 395

Broker Remarks

The Oyster Lightwave 395 is designed to be a fast cruiser/racer. The owner has taken care to increase the comfort of Blue Pearl without compromising on her racing ability. Hasn't been used recently so needs some attention in areas. Lying Bangor, North Wales.



Accommodation

The accommodation is spacious and bright. Down below is saloon with galley and nav station and a large aft cabin and a forecabin and good sized heads compartment. The upholstery is in good order.

The saloon provides ample seating and has a table which can be deployed or folded away. Two single berths can be created here. There is a double in the forecabin and an offset double with seat and dry locker in the large aft cabin.

The heads compartment has handbasin, shower and covered shelving.

There is a wet locker as well as plenty of dry storage.

The galley comprises a Plastimo Neptune two burner stove with oven and grill, fridge and sink with pressurised hot and cold water. Hot water heated by calorifier or immersion.

Mechanical and Rigging

Construction

Fin keel
Oyster Yachts built
Dark Blue Hull

Mechanical

1x BETA 30hp
New in 2015
Serviced 2019
Diesel, shaft driven
Very low hours

Electrics

2x batteries
New 2014
Shore power and cable

Rigging

3 x mainsail (lazyjacks and stackpack)
3 x genoa (including 1 lightweight)
1 x No 3
3 x spinnaker (1 reaching)
Main, No 1 and No 3 are racing suites fitted 2010/2011
by Crusader Sails
Standing and running rigging replaced 2014

Compass, magnetic, digital and rate gyro
Coursemaster MV 950 Autopilot (2017)
Raymarine E80 chartplotter with fishfinder
Furuno GPS
Clipper wind speed direction
Lowrance VHF (2013)
AIS receiver (2013)

Other Equipment

TV (2011) with masthead aerial and amplifier
Domestic radio (2018)
Barometer
Cockpit cushions
Sprayhood (2014)
Warps and fenders
2 x horseshoe lifebuoy
Manson anchor with 40m chain and 40m warp
Folding prop
Emergency nav lights
6 man liferaft
Bosuns chair
Automatic life jackets x 6
Hacksaw
Emergency tiller
Boarding ladder
Mooring grabber
Flares
Seago Liferaft
Fenders
Boathook
Shipping cradle included in sale
Fire extinguishers

Updates in year order

2013

Folding prop. replaced
Television installed
AIS replaced and upgraded to masthead aerial
Ships radio replaced
Charger controller
Partial interior lighting renewed
Side shelving in main cabin reduced to widen saloon area
Electric bilge pumps to main bilge, engine sump, shower and basin in heads

2014

Canopy (spray hood) and lazy jacks converted to "stack pack" with new mainsail cover
Nav. Lights replaced with LED's
Liferaft 6 man canister on pushpit
All instrumentation renewed including fishfinder displaying on Raymarine E80
Batteries renewed

2015

Laid up ashore
Engine replaced with 30HP Beta including cockpit control panel
New cutlass bearing
Hull respray
Calorifier reconditioned with new element and thermostat

2016

Laid up ashore
Hull polished
Keel support stringers reconditioned
Water tanks removed, cleaned and replaced
Additional sound insulation to engine bay
Additional silencer/water stop to exhaust
Forehatch reglazed

2017

New water pump
Engine re-alignment completed with new sea water intake and modified exhaust elbow
New Autopilot (Crusader CM 950)
Forward bunk mattresses recovered
Some further interior lighting renewed
New 'stackpack' boot (spare available)
New pump to W.C.

2018

Additional inter-drainage to bilges
Wheel recovered in leather
Domestic radio replaced
Additional RFI suppr

Contact

Boatpoint Conwy

CONWY OFFICE

Address:

Boatpoint Conwy, Conwy Marina, Conwy, North Wales, LL32 8GU

***Telephone:* 01492 580001**

***Email:* info@nybconwy.co.uk**

