

Bavaria 37



YEAR 2001 | £37,500 | VAT PAID | CONWY OFFICE



Summary

Manufacturer: Bavaria 37

Price: £37,500

Location: Conwy

Year: 2001

ID no.: 073846

DIMENSIONS

- **LOA:** 37' 11" (11.55m)
- **Beam:** 12' 3" (3.74m)
- **Draft:** 6' 1" (1.85m)
- **Keel:** Fin keel

ACCOMMODATION

- **Berths:** 8
- **Cabins:** 3
- **Heads:** 1
- **Showers:** 2

PERFORMANCE

- **Top Speed:** 7
- **Cruising Speed:** 5

TANKAGE

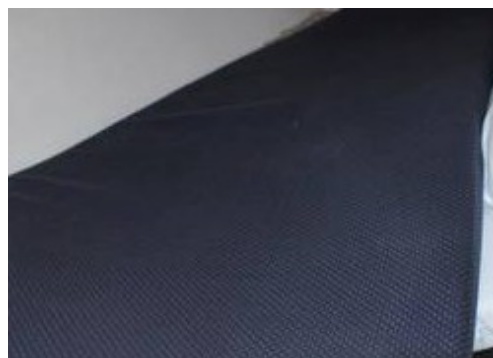
- **Fuel:** Diesel
- **Fuel Tank Size:** 150 Litres
- **Water Tank Size:** 150 Litres

MACHINERY

- **Engine Make:** Volvo Penta MD2030
- **Horsepower:** 29
- **Drive Type:** Saildrive

OTHERS

- **Aircon:**
- **Heating:**



Bavaria 37

Broker Remarks

'Christina', a 2001 Bavaria 37 for sale which is presented well and maintained to a good level. Accommodation for 6 in 3 double berths plus saloon. All furling sloop rig. Deep draft fin keel. Volvo Penta 29hp diesel engine with sail drive. Fully integrated instrument pack. all safety equipment is certified and up to date. Antifouled in April 2019 Lying Conwy Marina. Uk Seabourne delivery can be arranged.



Accommodation

6 berths in 3 cabins, plus 2 berths in saloon, wood finish and plenty of windows and opening hatches.

GALLEY: Twin s/steel sinks supplied by H&C pressurised water; stove with 2 hob rings and oven; top loading fridge with cooler element; plenty of work surfaces, cupboards and drawers.

HEADS: sea toilet, vanity unit with basin and mixer tap supplied with H&C pressurised water and providing shower head; mirror; storage cupboards

Construction, Mechanical and Rigging

Construction:

Bavaria 37, built by Bavaria Yachts in 2001 to a design by J&J.

GRP hull, deck and superstructure

Fin keel

Mechanical:

Volvo Penta MD2030 29hp diesel inboard with saildrive

Comprehensive Service history

Electrical:

12v & 240v supply

Service and domestic batteries

240v shore power c/w shore support cable

240v Battery charger

Charging also via engine alternator and solar panels

Water:

Pressurised hot and cold water

Water heated via engine calorifier or 240v immersion heater

Rigging:

Seldon aluminium mast and boom

Stainless standing rigging including spreaders new in 2018

All lines run back to cockpit

Running rigging

In-mast furling mainsail

Furlex furling genoa

Sail drive diaphragm replaced 2017



Deck Equipment:

Anchor and chain (No windlass)
Fenders
Mooring warps
Cleats
Sprayhood
Dodgers
Teak covered cockpit sole and seating
Boarding ladder
Flag pole and staff
Cockpit table
Deck mounted solar panel
Full cockpit canvas enclosure.

Navigation Equipment:

Compass
Raymarine Chartplotter/GPS display at helm
(New 2018)
Raymarine ST60 Tridata (Depth, Speed, Log)
Raymarine ST60 Wind
Raymarine ST60 Multi
Raymarine ST6002 Autopilot
Raymarine RL70 Pathfinder (Chart table)
Raymarine radar c/w scanstrut mast bracket
Nasa Navtex (Chart table)
Navman 7110 VHF radio
Clock and Barometer

Safety Equipment:

Horseshoe lifebuoy x 2
Jan Buoy inflatable danbuoy
Beaufort 4 man liferaft
First aid kit
Fire blanket
Fire extinguishers April 2019
Gas alarm
Manual and electric bilge pumps
10 Lifejackets
All safety equipment is certified and up to date.

Contact

BOATPOINT CONWY CONWY OFFICE

Address:

Boatpoint Conwy, Conwy Marina, Conwy, North Wales, LL32 8GU

Telephone: 01492 580001

Email: info@nybconwy.co.uk

Disclaimer : Boatpoint Conwy offers the details of this vessel for sale but cannot guarantee or warrant the accuracy of the information contained in the specification or warrant the condition of the vessel or equipment. A buyer should instruct his agents, or surveyors, to investigate such details as the buyer desires validated. This vessel is offered for sale subject to no prior sale, price change, or withdrawal without notice.

