

# Glastron Glastron GS259

YEAR 2008 | £19,000 | CONWY OFFICE



## Summary

**Manufacturer:** Glastron Glastron GS259

**Price:** £19,000

**Location:** Conwy OFFICE

**Year:** 2008

**ID no.:** 073601

### DIMENSIONS

- **LOA:** 24' 10" (7.57m)
- **Beam:** 8' 6" (2.59m)
- **Draft:** 2' 4" (0.7m)
- **Keel:** Planing

### ACCOMMODATION

- **Berths:** 4
- **Cabins:** 1
- **Heads:** 1
- **Showers:** 1

### PERFORMANCE

- **Top Speed:** 30kts
- **Cruising Speed:**

### TANKAGE

- **Fuel:** Petrol
- **Fuel Tank Size:** 212 Litres
- **Water Tank Size:** 68 Litres

### MACHINERY

- **Engine Make:** Volvo Penta 5.0GXl
- **Horsepower:** 200
- **Drive Type:** Sterndrive



# Glastron Glastron GS259

## Broker Remarks

This Glastron GS 259 is an ideal boat for those wishing to enter the boating world or for those moving up from a bowrider. The cockpit provides ample room for socialising with friends and family. Capable of seating 8 people comfortably. The 4 berth interior accommodation provides ample space for overnight and weekend trips.



## Accommodation

A step down through the companionway door leads you down to a saloon with all the necessary commodities for overnight and weekend trips. A fridge, sink, cupboard space, single burner and microwave are all located in the saloon. The double V-berth to the fore is made up utilising the infill cushions. A moderate size mid cabin under helm is an ideal space for smaller members of the family. Heads compartment with sink and shower.

# Mechanical and Rigging

Single engine Volvo Penta 5.0 Ltr GXI 200hp

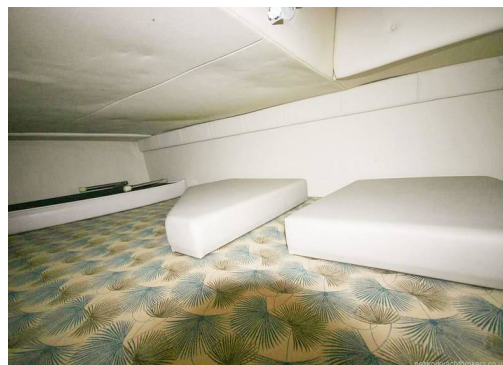
Battery

Battery Charger

Shore Power - 240V with cable

Bilge Pump

Hot & Cold Water System



Covers - Full cockpit canopy  
Bimini - Intergrated bimini  
Stereo  
Mid Cabin Double Berth  
Fridge/Freezer  
Single Burner Range  
Microwave  
Cabinet Storage  
Walkthrough Windshield  
Bimini with Enclosure  
Swim Platform with Ladder  
Ample Cockpit Seating  
Removable Aft Bench Seating  
Helm Flip Up Bolster

# Contact

**Boatpoint Conwy**

**CONWY OFFICE**

***Address:***

Boatpoint Conwy, Conwy Marina, Conwy, North Wales, LL32 8GU

***Telephone:* 01492 580001**

***Email:* [info@nybconwy.co.uk](mailto:info@nybconwy.co.uk)**

