

Bavaria Yachts Bavaria

YEAR 2003 | £51,950 | CONWY OFFICE



Summary

Manufacturer: Bavaria Yachts Bavaria

Price: £51,950

Location: Conwy OFFICE

Year: 2003

ID no.: 073598

DIMENSIONS

- **LOA:** 37' 5" (11.40m)
- **Beam:** 11' 11" (3.63m)
- **Draft:** 5' 5" (1.65m)
- **Keel:** Fin keel

ACCOMMODATION

- **Berths:** 6
- **Cabins:** 2
- **Heads:** 1
- **Showers:** 1

PERFORMANCE

- **Top Speed:** 7.2kts
- **Cruising Speed:** 6kts

TANKAGE

- **Fuel:** Diesel
- **Fuel Tank Size:** 150 Litres
- **Water Tank Size:** 300 Litres

MACHINERY

- **Engine Make:** Volvo Penta 2030
- **Horsepower:** 29
- **Drive Type:** Saildrive



Bavaria Yachts Bavaria

Broker Remarks

A superb example of the popular and accomplished Bavaria 36. She is extremely well specified and has been maintained to a high standard. This Bavaria 36 is the two cabin owners version.

BAVARIA 36 YACHT BUILT IN 2003

She is a credit to the owner so If your looking for an exceptional Bavaria 36 Yacht this could be the one for you. This 2 double cabin version sleeps 6 in comfort. Only used recently and locally around Conwy and in the Irish Sea however she is equipped to sail much further if you wish. Fully integrated navigation equipment, large comfortable saloon and generous cockpit, this boat feels much larger than she actually is. Available to view in North Wales, please call for further information or to arrange a viewing.



Accommodation

Two Cabin version - sleeps 6.
Mahogany interior joinery. Teak & holly cabin sole.
Blue upholstery and saloon curtains.
Cabin heating – Eberspacher (4 outlets).

Forward cabin with large double berth, hanging lockers, storage and three deck hatches.
Saloon with plenty of storage, 4 opening portlights and deck hatch. The two settee berths in the saloon are fitted with lee cloths.
Galley to port with double sink, two burner gas cooker & oven and 12v refrigerated cool box.
Nav station to starboard with chart table and seat.
Aft cabin to port with large double berth, hanging locker, shelf storage and two opening port lights.
Heads with Jabsco marine toilet, hand basin, shower (with pump out) and hanging wet locker.

Mechanical and Rigging

Construction:

Built in 2003 in Germany by Bavaria Yachts.
GRP hull, deck and superstructure.
Teak laid cockpit sole and seats.
Fin keel (1.65m draft standard version) with spade rudder.
Wheel steering with emergency tiller.
Antifouled June 2019
Full service June 2019

Engine:

Volvo 2030 29hp diesel engine.
Saildrive and Brunton 2-bladed Autoprop.
Ambassador rope cutter.
Cruising speed is approx. 6 knots. Max speed is approx. 7.2 knots.
Bow thruster - Sidepower SP55.
New exhaust elbow (2012)

Tankage:

Fuel capacity is 150 litres in 1 plastic tank.
Fresh water capacity is 300 litres in 2 plastic tanks.
Holding tank is approx. 85 litres, with pump out facility.

Electrics:

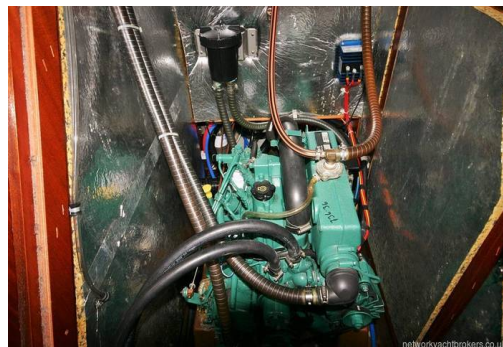
12 volt system supplied by 2 x 140Ah service batteries and a 55Ah engine start battery (new 2014)
Charging is by engine alternator and a 240v 24A battery charger (new 2014)
Shore power, with 4 outlets and shore cable.

Water System:

Pressurised hot and cold water to galley, heads and aft bathing platform.
Hot water heated by engine calorifier and 240 volt immersion heater.

Rigging:

Fractional sloop with Selden spars.
In-mast mainsail reefing.
Selden Furler 200S headsail furling system.
Selden Rodkicker vang system.
Telescopic spinnaker pole.
Stainless steel standing rigging.
Terylene running rigging - all halyards are led aft to cockpit.



Navigation Aids:

Plastimo steering compass on pedestal.
Raymarine - Tri-data (log/speed/depth)
Raymarine - Windspeed & direction.
Raymarine - GPS system.
Raymarine - Chartplotter/Radar (colour) at chart table.
Raymarine - Radar/Chartplotter (mono) at helm - interfaces to unit at chart table.
Raymarine autopilot, with Giro upgrade.
Raymarine - autopilot remote control, with extra sockets.

Ground Tackle:

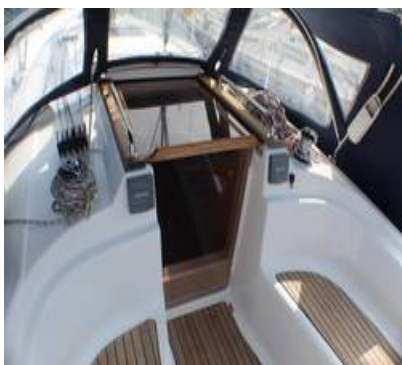
Plough (16kg) anchor with 50m chain.
Electric anchor windlass.
Danforth kedge anchor, chain and warp.

General Equipment:

Navigation lights.
Pulpit, pushpit and guardwire in stainless steel.
Central mooring cleats.
Gates, port and starboard.
Sprayhood with grab rail.
Tonneau cover for cockpit.
Cockpit table (folding) in teak.
Stereo radio and CD player, with saloon speakers.
Boarding ladder.
Binicle cover (2014)

Safety Equipment:

Automatic and manual bilge pumps.
Webbing jackstays.
Fire extinguishers (x 4), including an automatic unit in the engine compartment.
Fire blanket.
Liferaft - OOD
Horseshoe lifebuoy.
Radar reflector.
Mariner 3.5 AUX



Contact

Boatpoint Conwy

CONWY OFFICE

Address:

Boatpoint Conwy, Conwy Marina, Conwy, North Wales, LL32 8GU

***Telephone:* 01492 580001**

***Email:* info@nybconwy.co.uk**

