



Bavaria Yachts Bavaria

YEAR 2009 | £95,000 | VAT PAID | CONWY OFFICE



Summary

Manufacturer: Bavaria Yachts Bavaria

Price: £95,000

Location: Conwy

Year: 2009

ID no.: 073595

DIMENSIONS

- **LOA:** 40' 6" (12.35m)
- **Beam:** 13' 1" (3.99m)
- **Draft:** 7' 4" (2.24m)
- **Keel:** Fin keel

ACCOMMODATION

- **Berths:** 6
- **Cabins:** 3
- **Heads:** 2
- **Showers:** 1

PERFORMANCE

- **Top Speed:**
- **Cruising Speed:** 6 knots

TANKAGE

- **Fuel:** Diesel
- **Fuel Tank Size:** 0
- **Water Tank Size:** 0

MACHINERY

- **Engine Make:** Volvo D2-55
- **Horsepower:** 53
- **Drive Type:** Saildrive

OTHERS

- **Aircon:**
- **Heating:**



Bavaria Yachts

Bavaria

Broker Remarks

A fine example of a large cruising yacht. One owner from new. Well equipped and fitted out for long distance cruising. Fully enclosed large cockpit thanks to sprayhood, bimini and side panels.

A large cruising yacht with ample room for sailing with family and friends.

One owner from new, last out of water May 2016, Antifouled May 2016,

Engine oil and filter changed Sept 2015. Done yearly, low engine hours.



Accommodation

Accommodation

- 3 cabins with 2 heads
- Fwd owners cabin with head compartment totally separate from saloon and galley living area
- 2 large aft cabins with ample storage throughout
- Large saloon with well equipped linear galley to port side
- 3-Burner gas cooker with oven
- Large fridge compartment
- Sink
- Ample storage
- Nav station with all instruments easily visible
- Heads with shower to port

Mechanical and Rigging

Mechanical

- Volvo D2-55 (53hp) saildrive
- Bowthruster SE80
- 45ah Battery charger (3 Channel)
- Hot water system 20L via engine and shore power
- Shore power supply

Last out of water 16/5 to 20/5 2016.

Antifouled and new anodes 18/5 2016.

Engine oil and filter changed Sept 2015. Carried out annually , **Only 131 hours on the engine.**

Sails and Rigging

- Fully battened mainsail, lazy jacks & reefing genoa (good condition)
- Original rigging



Instruments

- Raymarine ST60 + (log/depth/temp)
- Raymarine ST60 Wind system
- Raymarine ST6002 Autopilot
- Raymarine C80 with GPS for cockpit table
- DSC radio with command mic in cockpit

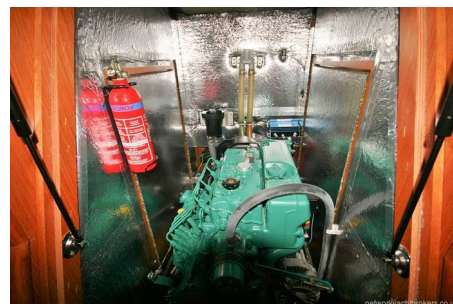
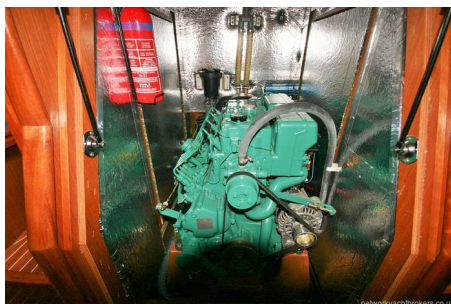
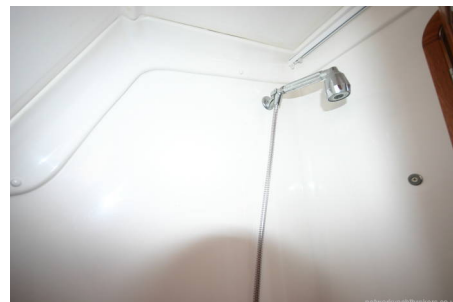
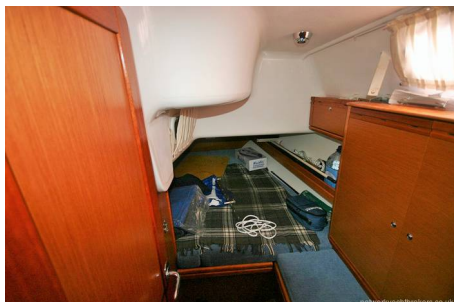
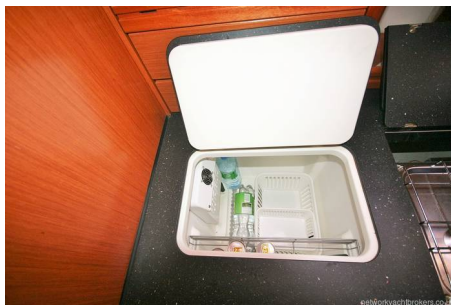
AIS targets shows on Raymarine plotter,
cockpit command override installed.

Deck Equipment

- Electric anchor windlass with remote control
- Mooring kit: 8 fenders and 3 x 20m mooring warps
- Anchor kit: 20kg Manson Supreme anchor & 60m chain
- 20kg Bruce claw anchor (spare)
- 1 Standard Cockpit shower (Cold water only)
- Grey hull striping
- 2 Spring cleats, aluminium, mid ship
- Sprayhood
- Bimini
- Rodkicker with gas pressurised spring
- Fenders; 10 cylinder, 1 large ball, 1 horseshoe, 2 dock

Safety Equipment

- Liferaft
- Dan buoy
- Lifebuoys
- Flares
- Fire Blanket
- 5 Fire extinguishers including one automatic in engine compartment



Contact

BOATPOINT CONWY CONWY OFFICE

Address:

Boatpoint Conwy, Conwy Marina, Conwy, North Wales, LL32 8GU

Telephone: 01492 580001

Email: info@nybconwy.co.uk

Disclaimer : Boatpoint Conwy offers the details of this vessel for sale but cannot guarantee or warrant the accuracy of the information contained in the specification or warrant the condition of the vessel or equipment. A buyer should instruct his agents, or surveyors, to investigate such details as the buyer desires validated. This vessel is offered for sale subject to no prior sale, price change, or withdrawal without notice.

