

# Sealine International Sealine

YEAR 2009 | £209,950 | CONWY OFFICE



# Summary

**Manufacturer:** Sealine International Sealine

**Price:** £209,950

**Location:** Conwy OFFICE

**Year:** 2009

**ID no.:** 073433

## DIMENSIONS

- **LOA:** 47' 0" (14.33m)
- **Beam:** 14' 8" (4.47m)
- **Draft:** 3' 8" (1.12m)
- **Keel:** Planing

## ACCOMMODATION

- **Berths:** 6
- **Cabins:** 3
- **Heads:** 2
- **Showers:** 2

## PERFORMANCE

- **Top Speed:** 30
- **Cruising Speed:** 25

## TANKAGE

- **Fuel:** Diesel
- **Fuel Tank Size:** 1500 Litres
- **Water Tank Size:** 505 Litres

## MACHINERY

- **Engine Make:** Cummins
- **Horsepower:** 480
- **Drive Type:** IPS



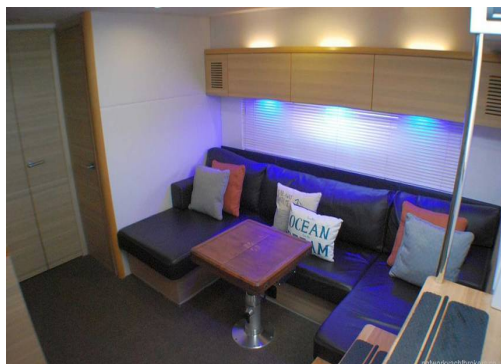
# Sealine International Sealine

## Broker Remarks

An excellent and heavily specified Sealine SC47 currently lying in Spain. Built in 2009. Fitted with well maintained twin Cummins QSB 5.9 480hp Inboard Diesel Engines powering Mercruiser Zeus Pod Drives with joystick control. This Sealine SC47 is a stunning sports convertible motor yacht in full White specification, with a uniquely generous cockpit and saloon. The electronic full sliding sun roof gives you all the benefits of a hardtop boat with the ability to transform her into an open top cruiser in just a matter of seconds. This design offers a great social environment in which guests will enjoy time together with an inclusive experience created by a large sociable seating area with numerous entertainment facilities on hand. It gives the freedom of a more open environment or can operate as a large closed environment, if required. It also offers a very spacious and safe family friendly areas both above and below deck offering extensive amounts of space compared to other boats of a similar size and design. The Sealine SC 47 was one of the first boats to be fitted with revolutionary Zeus Drive systems. This drive system was developed on much larger ships before being adapted to leisure craft. If you are used to conventional twin engines and bow thruster, you won't believe what you have been missing in terms of this modern systems close quarter manoeuvring, making docking so much more precise and pleasurable. Its four propeller system also offers excellent efficiency in both available power and fuel efficiency.



specification SC47 built by Sealine in the UK.



# Accommodation

This beautiful Sealine SC47 lying in Spain built in 2009. Fitted with twin Cummins QSB 5.9 480hp Inboard Diesel Engines powering Zeus Pod Drives with joystick control is a must see.

## Layout and Accommodation

The cockpit area of this SC47 has a large sociable seating area for twelve persons, complete with a large extending table, BBQ, Fridge, Wine Cooler and sink. It also has a fully integrated Yamaha Bluetooth sound system and ceiling mounted LG flat screen TV should the mood take you. This offers the freedom of a more open environment within seconds by opening the electrical retracting roof or can offer a large fully enclosed social area if the weather is inclement.

## Master mid cabin aft

This is a full beam space, ensuite with separate shower and heads. A centrally located large double bed and flat screen TV fitted to the forward bulk head.

## Forward cabin

A good size double berth with full standing head room. This second cabin is bigger than most master cabins in other crafts.

## Saloon

The salon offers double accommodation with the conversion of the U-shaped saloon seating area.

## Cockpit

Option to sleep a further two persons in the cockpit -under canvas.

# Mechanical and Rigging

Fitted with twin Cummins QSB 5.9 480hp Inboard Diesel Engines powering Zeus Pod Drives with joystick control.

**\*\*\*\*\*Service History - Recent Service - Low Engine Hours\*\*\*\*\***

Recent Out of water service (inc all Gearbox & Transfer Fluids, all Anodes & Anti-foul)  
Bilge pumps, automatic electric (2) and manual (2)  
Engine room fans  
Engine room sound proofing  
Engine room lights  
Fire extinguisher system, automatic and manual, in engine room  
Fuel filters for engines  
Steering, Hydraulic/Electrical



The full sliding Electric Sun Roof gives you all the benefits of a hardtop boat with the ability to transform into an open top cruiser in just a matter of seconds. A stunning sports convertible with a uniquely generous cockpit and saloon. Enjoy together an inclusive experience created by a large sociable seating area and the freedom of a more open environment.

### **Deck Equipment**

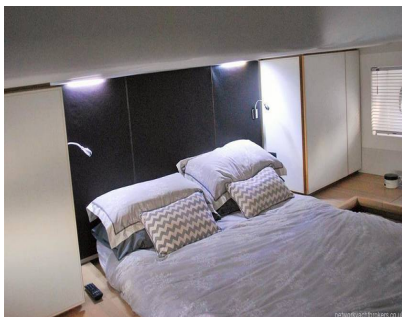
40m of galvanized chain  
Anchor chain bitter end loop  
Anchor, (galvanised) Delta 20kg  
Anchor locker, self draining  
Anchor safety lead  
Bow cleat, 200mm (8") Sealine cast stainless steel  
Self stowing anchor  
Electric anchor windlass  
Warps  
12 x fenders and covers  
Ensign and flag pole  
Shore power cable  
Boat hook  
Full Aft canvas enclosure  
Mains boat charger  
Eberspacher electronically controlled diesel heating system from stbd tank  
Electric sun roof  
Friction closing blind to saloon  
Covered foot switches for windlass operation  
Deck light LEDs  
Deck moulding, non-slip  
Fender strip, silver anodised aluminium with white rubber insert  
Foredeck hatch, opening  
Fuel and water deck fillers  
Mooring cleats, 6 off, 250mm (10") Sealine cast stainless steel, 3 to port and 3 to stbd  
Navigation lights, full set  
Open bow pulpit and guard rails in stainless steel  
Sealine anchoring chain lock  
Shore power socket (1)  
Access hatch to engine room, lockable with gas struts  
Antiglare panel under screen in dark colour  
Bathing platform, teak laid with storage locker in deck steps port (Fender locker)  
Bathing shower with hot and cold water  
Cockpit galley with sink, tap and storage below

~  
Fender stowage for 6 off fenders  
Fuel shut-off valves  
Full glass side window to port and stbd  
Handrails in stainless steel  
Large, full height screen, clear toughened glass  
Liferaft storage cradle  
Manual bilge pumps in recess under seating  
Pantograph wipers, dual speed with wash  
Rear canopy clamshell with easy drop down functionality  
Rear canopy 3 piece, with detachable sides including  
zipped access door and clear flexible windows  
Sealine Electrical opening roof system  
Seating, stbd side – chaise longue  
Seating, 'U' shaped to port with storage below  
Skylight under sunbed  
Spotlighting (9)  
Stowage recess  
Sunbed opposite the helm seats  
Swim ladder (stowed in bathing platform locker) with flush  
sockets in platform  
Teak cockpit table  
Teak laid and self-draining cockpit  
Transom door, sliding  
Under seat stowage bins x 2 port side  
Wetbar bin

### **Additional Equipment**

BBQ in cockpit lounge  
Fridge, wine cooler and sink  
Seating for 12 p





# Contact

**Boatpoint Conwy**

**CONWY OFFICE**

***Address:***

Boatpoint Conwy, Conwy Marina, Conwy, North Wales, LL32 8GU

***Telephone:* 01492 580001**

***Email:* [info@nybconwy.co.uk](mailto:info@nybconwy.co.uk)**

