

Select Yachts Selene

YEAR 2007 | \$1,100,000.00 | OLD-HMBLE RIVER OFFICE



Summary

Manufacturer: Select Yachts Selene

Price: \$1,100,000.00

Location: OLD-Hmble River OFFICE

Year: 2007

ID no.: 066817

DIMENSIONS

- **LOA:** 65' 1" (19.84m)
- **Beam:** 17' 10" (5.44m)
- **Draft:**
- **Keel:** Displacement

ACCOMMODATION

- **Berths:** 8
- **Cabins:** 3
- **Heads:** 2
- **Showers:** 2

PERFORMANCE

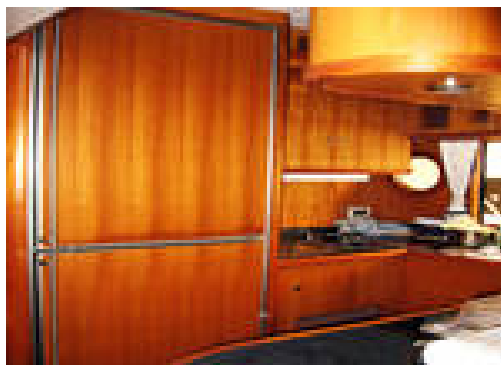
- **Top Speed:** 12.5 knots
- **Cruising Speed:** 8 to 10.5 knots

TANKAGE

- **Fuel:** Diesel
- **Fuel Tank Size:** 1100 US Gallons
- **Water Tank Size:** 600 US Gallons

MACHINERY

- **Engine Make:** John Deere
- **Horsepower:** 265
- **Drive Type:** Shaft drive



Select Yachts Selene

Broker Remarks

Selene 60 is a Sea going trawler type motor yacht with many unique features. Capable of long range voyages in comfort due to the twin stabilisers and reliable John Deere engines. Built for a knowledgeable owner who likes diving and fishing, as well as living aboard in luxury and comfort. The owner now want to upgrade to a Selene 72 and is therefore offering this beautiful vessel for sale. She sleeps 6 in three cabins, has a crew area with Pullman bed, providing it's owner and crew with lots of storage spaces. Equipped with long range communication systems, generator, air conditioning, diving compressor, full entertainment system, and Water maker.



Accommodation

Guest Cabin

There are 2 guest cabins. Access to these 2 cabins is by the stairs from the starboard side of the wheelhouse.

There is a VIP cabin located at the forward. It has a queen-size island berth. Hanging lockers are provided and additional drawer space can be found below the bed. The bed can be lifted upwards to access additional storage, and it is ideal to store suitcases and other bulky items.

The other guest cabin has a hi-lo bunk with hanging lockers and drawers and is provided with a writing table. Both cabins share the bathroom/toilet, with the VIP cabin having a direct access to it through a linked door.

A very important feature is the huge storage below the floorboard in the bilge area. There is a lot of room for the storage of food, provisions and spare parts.

MASTER CABIN

The access to the master bedroom is by the stairs at the forward portside of the saloon. It has a queen-size bed, vanity table with attached bathroom/toilet. It also has its own TV and DVD player.

Again, there are drawers and storage below the bed for personal items and suitcases. Extra storage is available below the floorboards to the bilge area.

Mechanical and Rigging

The engine room is very well insulated with high grade sound proofing materials and the saloon floor is further insulated with a "floating floorboard" system. Therefore the living areas in the yacht are quieter than most other boat. CCTV system in engine room.

The large electrical console in the wheelhouse houses the AC and DC main switches for the yacht. It is illuminated and is protected by a glass panel.

This yacht is unique as it also has three phase outlets from the generator. This is to provide a more efficient power supply for the electrical air compressor located at the flybridge. Normally a yacht of this size will only have a single phase AC supply

Wesmar Stabilizers

Generator: Kohler 20 EFOZD

Water Maker: Horizon 420 GPD plus upgrade 800 Gallons a day

Shower Power: Shorepower connection at bow & Stern

Bow Thruster : Sidepower 25HP



notice the wide beam because of the extended full beam on the port side. There is a long sofa instead of the normal 2 single seater armchair. This is to allow long items to be kept below the seat.

Sound System / TV

BOSE set hooked up to the Hi-fi System and karaoke set. The Karaoke set has 40,000 songs stored inside. The speakers are also "BOSE" with surround sound

TV 37" Sharp LCD TV which is linked to the satellite receiver. Additional TV and DVD in master cabin .

Cooker is Electric

Fridge: Large twin door Liebherr, separate ice maker

Freezer: Yes

Air Conditioning : Cruise Air

Galley

There is a galley counter and full galley equipment with electrical hobs and an exhaust fan. A full size twin door "Liebherr" refrigerator stands at the bulkhead to provide adequate food storage for long cruises. There is also a garbage compactor, reinforced drawers, dishwasher and a small ice maker and oven to complete the galley layout. It is a fully functional galley. Additional AC power outlets to cater for additional galley appliances if needed.

Utility Area

The utility area is located behind the bulkhead of the master's cabin. It has a work table which can be used for ironing clothes, with an AC wall plug for the iron. On top of the work table, the Pullman is used for storing / stacking provisions for long voyages . This area also houses the Panasonic washer / dryer deep freezer, small wash basin and the main electrical DC on-off switches together with the battery charges and inverters.

Forward Deck and Portuguese Bridge

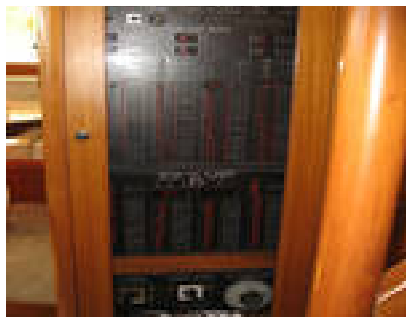
Exiting the Wheelhouse and moving forward is the Portuguese bridge. It is a brilliant idea to utilize the space but the Portuguese bridge to store the scuba tanks. Altogether, 11 tanks can be kept in this area together with other scuba accessories .

The foredeck has a bench seat for 3 persons ideal for

A hatch sits in the centre of the fore deck to serve as an escape hatch and Ventilation for the VIP cabin below. This hatch is fitted with retractable ladder, sunscreen and insect screen. There is a heavy duty anchor windlass with 2 cabin capstans / gypsies, operating 2 anchors. One anchor is equipped with full chain whilst the other is fitted with chain / rope for deeper anchorage. The signature design of the Selene is the stainless steel "Samson Post" located proudly behind the anchor windlass.

Flybridge

Access to the flybridge is on;y through the wheelhouse. The console houses all the essential navigation equipment and has an independent "Icom" VHF radio. An identical set of John Deere engines gauges are also provided, Sililar to those in the wh



Contact

Calibra Marine International Limited t/a Network Yacht Brokers Hamble

OLD-HMBLE RIVER OFFICE

Address:

Network Yacht Brokers Hamble Deacons Marina Bursledon Bridge Southampton SO31 8AZ

***Telephone:* 02380 404 509**

***Email:* info@nybhamble.co.uk**

