

# Adagio Yachts 48

**YEAR 2008   |   €250,000.00   |   OLD-HMBLE RIVER OFFICE**



## Summary

**Manufacturer:** Adagio Yachts 48

**Price:** €250,000.00

**Location:** OLD-Hmble River OFFICE

**Year:** 2008

**ID no.:** 066804

### DIMENSIONS

- **LOA:** 47' 11" (14.60m)
- **Beam:** 13' 1" (4.00m)
- **Draft:**
- **Keel:**

### ACCOMMODATION

- **Berths:** 5
- **Cabins:** 2
- **Heads:** 2
- **Showers:** 2

### PERFORMANCE

- **Top Speed:**
- **Cruising Speed:**

### TANKAGE

- **Fuel:** Diesel
- **Fuel Tank Size:** 0
- **Water Tank Size:** 475 Litres

### MACHINERY

- **Engine Make:** Volvo D6
- **Horsepower:** 0
- **Drive Type:**



# Adagio Yachts 48

## Broker Remarks

This hand crafted Sundeck version of the famous Adagio range of trawler yachts is superbly presented for sale away immediately. This craft is ideal for inland water ways or voyaging to various parts of the world. This is very much an owners version with twin double cabins fore and aft, ideal for spending long periods of time in safety and comfort . The very inclusive inventory comprising of high quality equipment throughout. which has been specially requested by the current owner 48' Sundeck is one of the 12 options and models in the Adagio Range .She is CE rated cat B for operation Coastal and can operate 60 miles from safe haven. By viewing this boat you will not be disappointed and we will consider part exchange of your current vessel. She is priced competitively for a quick sale.



## Accommodation

Number of single berths: 5

Number of double berths 2

Number of cabins : 2

Number of heads : 2

Number of bathrooms: 2

Seating capacity: 8

Convertible Saloon

# Mechanical and Rigging

## Engine 1:

Engine Brand : Volvo

Year built : 2008

Engine Model : D6

Engine Type: Inboard

Engine Fuel / type : Diesel

Location : Starboard

Engine Hours: 750

Drive Type : Direct Drive

Engine Power : 272 KW

## Engine 2:

Engine Brand : Volvo

Year Built :2008

Engine Model : D6

Engine Type : Inboard

Engine/ Fuel Type: Diesel

Location : Port

Engine Hours : 750

Drive Type: Direct Drive

Engine Power: 272KW



**Tanks**

Fresh Water Tanks: 2 Stainless Steel ( 475

Litres )

Fuel Tanks : 2 (1100 Litres)

Holding Tanks; 1 Stainless steel (250 Litres

)

**Electronics**

Plotter

Autopilot

Radio

GPS

Depthsounder

Log - Speedometer

Radar

CD player

Compass

VHF

**Inside Equipment**

Heating

Washing Machine

Manual bilge pump

Hot Water

Battery Charger

Electric Bilge pump

Refrigerator

Oven

Electric Head

Stern Thruster

Bow thruster

Microwave Oven

**Electrical Equipment**

Generator 9k w Onan

Shore Power inlet

Electrical Circuit : 220V

**Outside Equipment / Extras**

Hydraulic Gangway

Outboard engine brackets

Swimming Ladder

Cockpit Cushions

Teak Sidedecks

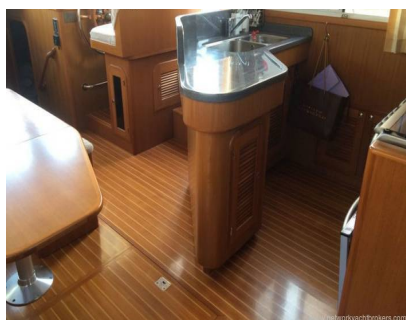
Teak cockpit

Cockpit Shower

Electric Windlass

**Covers**







# Contact

**Calibra Marine International Limited t/a Network Yacht Brokers Hamble**

## **OLD-HMBLE RIVER OFFICE**

***Address:***

Network Yacht Brokers Hamble Deacons Marina Bursledon Bridge Southampton SO31 8AZ

***Telephone:* 02380 404 509**

***Email:* [info@nybhamble.co.uk](mailto:info@nybhamble.co.uk)**

