



Maxi 1000

YEAR 1995 | £49,950. | VAT PAID | LYMINGTON

Another boat sold by
Network Yacht Brokers

Summary

Manufacturer:

Price: £49,950.

Location: Lymington

Year: 1995

ID no.: 04297

DIMENSIONS

- **LOA:** 33' 6" (10.20m)
- **Beam:** 10' 8" (3.25m)
- **Draft:** 5' 7" (1.7m)
- **Keel:** Fin keel

ACCOMMODATION

- **Berths:** 7
- **Cabins:** 2
- **Heads:** 0
- **Shower:**

Another boat sold by
Network Yacht Brokers



Water Tank Size: 90 Litres

MACHINERY

- **Engine Make:** Volvo 2020
- **Horsepower:** 19
- **Drive Type:** Shaft drive

OTHERS

- **Aircon:**
- **Heating:**

Maxi 1000

Broker Remarks

This Pelle Peterson designed classic has a well earned reputation for being an excellent fast cruiser which has been known to do very well at the local races.

She sleeps up to seven in two cabins and the converted saloon berths and with a large galley area and practical heads she is ideal for extended cruising. Her Swedish heritage comes through in the quality of her wood interior which gives an air of quality to the Maxi 1000 not found on Beneteau's, Jeanneau's and Bavaria's.

'Baloo' has had two owners from new and has been well looked after. She has just been overhauled and the engine serviced so is absolutely ready for the season.

She had a new engine and is in good condition. She is a real gem.



**Another boat sold by
Network Yacht Brokers**

This is a nice example of a MAXI 1000 and she is ready to go for this season.

**Another boat sold by
Network Yacht Brokers**

Accommodation

The Maxi 1000 can sleep 7 . The forward cabin is in a twin v berth but can be filled in to form a good sized double. The port side saloon berth converts to a double with a single starboard seat berth. The rear cabin provides a good sized double berth. The galley has a oven with hob, grill , sink and storage. The heads is large and practical with a vanity unit hot water and a wet locker.

**Another boat sold by
Network Yacht Brokers**

Mechanical and Rigging

Volvo 2020 Serviced May 2016

New standing rigging 2016

Folding 2 bladed prop

Hot water

Anti fouled May 2015

New Hyde mainsail fully battened 2011

Genoa 140 % with UV strip

New 2017 Genoa 105%

New sail cover

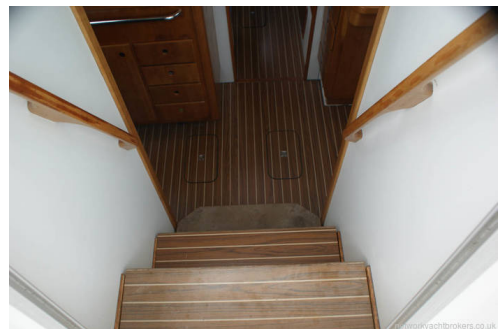
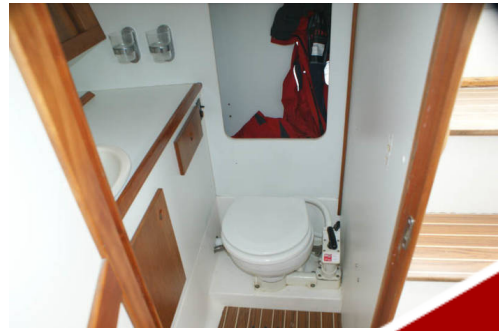
Jib 95% laminated battened with protective sock

Self Tacking JIB

Kemp Cruising chute

Acrylic washboards and hatch cover

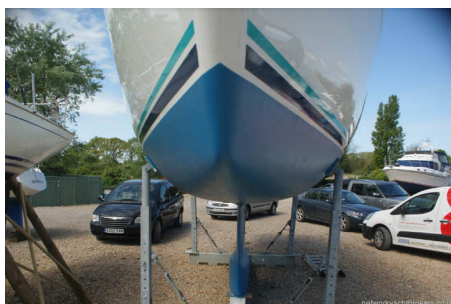
2 x Anchors Fortress type and C



**Another boat sold by
Network Yacht Brokers**

Simrad TP 300 autopilot
Furuno 1613 Radar
Philips GPS
Navman VHF
Navtex unit
6 man liferaft
Wetline 235 inflatable
4 Fenders and 4 warps
Oven, grill, two burners

**Another boat sold by
Network Yacht Brokers**



**Another
Network**

Contact

NETWORK YACHT BROKERS LYMINGTON LYMINGTON OFFICE

Address:

Howard Ross, Network Yacht Brokers Lymington, Marine House
SO41 3AT

Telephone: 01590 671381

Email: lymington@networkyachtbrokers.com

Disclaimer : Network Yacht Brokers Lymington offers the information contained in the specification or warrant the correctness of the details as the buyer desires validated. This information is for information only and should not be used for any other purpose.

Another boat sold by
Network Yacht Brokers

